

EDWARDS, CALIFORNIA

VOR/DME or TACAN Y RWY 5R

[USAF]

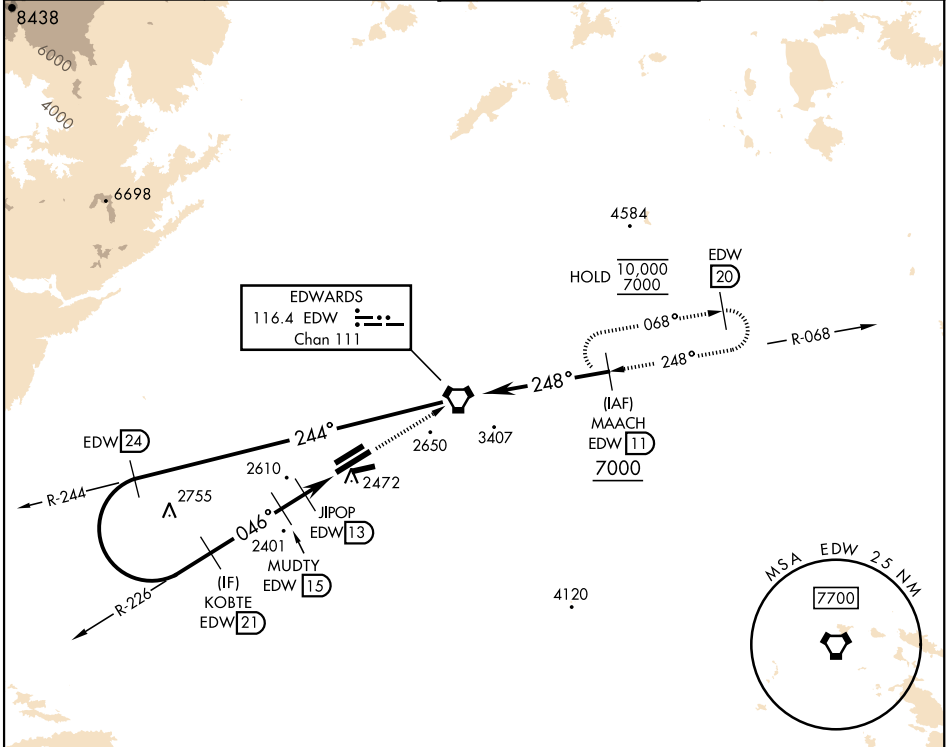
EDWARDS AFB (KEDW)

VORTAC EDW 116.4 Chan 111	APCH CRS 046°	Rwy Idg 15,017 TDZE 2302 Arprt Elev 2310
---	-------------------------	---

▼ *Circling not authorized NW of Rwy 5L-23R.
Circling not authorized at night to Rwy 5L-23R.

MISSED APPROACH: Track EDW VORTAC R-226 to EDW.
Intercept EDW R-068 to MAACH and hold. Maintain 7000.
Missed approach requires use of RNAV or ATC radar monitoring.

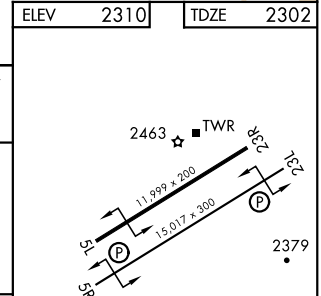
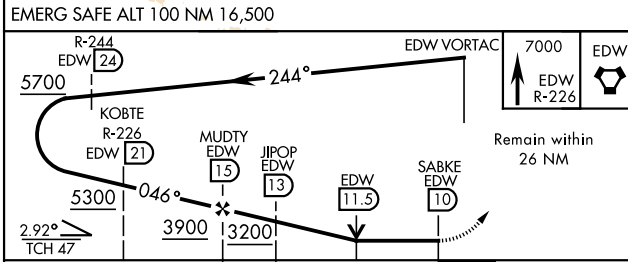
ATIS ★ 127.425 269.9	JOSHUA APP/DEP CON 133.65 348.7	TOWER ★ 120.7 (CTAF) 318.1 (CTAF)	GND CON 121.8 225.4
--------------------------------	---	---	-------------------------------



SW-3, 14 MAY 2026 to 11 JUN 2026

SW-3, 14 MAY 2026 to 11 JUN 2026

ELEV	2310	TDZE	2302
------	------	------	------



CATEGORY	A	B	C	D	E
S-5R	2820-1 517 (600-1)		2820-1 5/8	517	(600-1 3/8)
CIRCLING*	2880-1 569 (600-1)		2880-1 1/2 569 (600-1 1/2)	2880-2	569 (600-2)

HIRL Rwy 5R-23L
REL Rwy 23L

EDWARDS, CALIFORNIA 34°54'N-117°53'W EDWARDS AFB (KEDW)

Amtd 3 23APR20

VOR/DME or TACAN Y RWY 5R