

WAAS CH 99607 W17A	APP CRS 173°	Rwy Idg TDZE 1952 Apt Elev 1953
--	------------------------	---

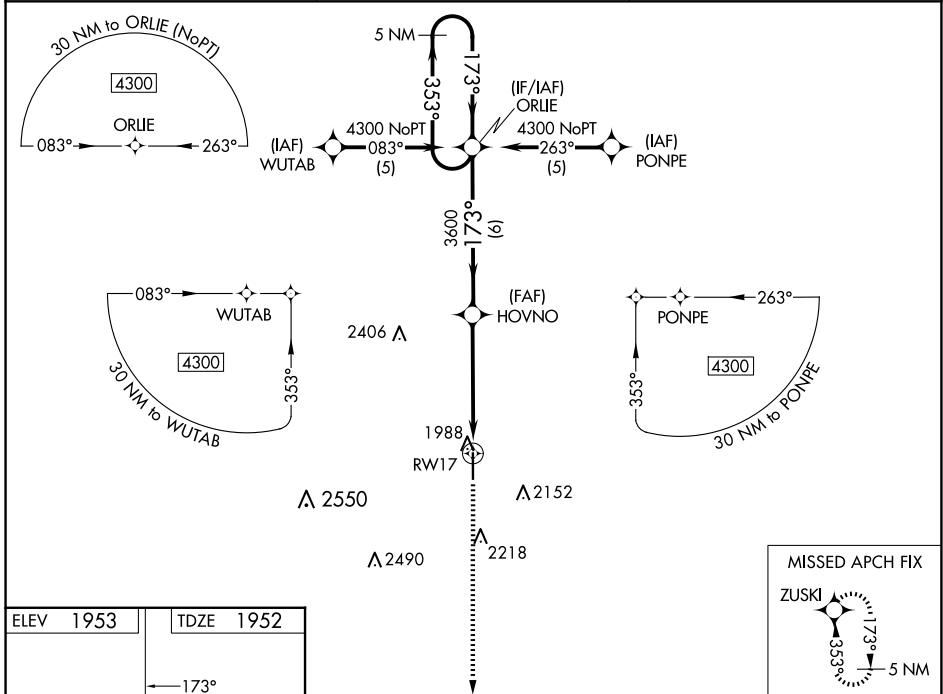
RNAV (GPS) RWY 17

PRATT RGNL (PTT)

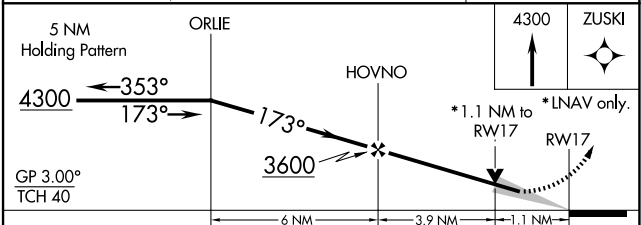
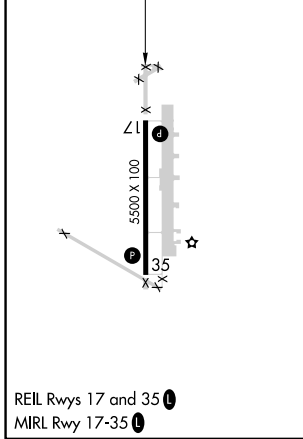
⚠ For uncompensated Baro-VNAV systems, LNAV/VNAV NA below -18°C (0°F) or above 54°C (130°F). DME/DME RNP-0.3 NA. When local altimeter setting not received, use Great Bend altimeter setting: Increase LPV DA to 2301 Feet and all visibilities ¼ SM; Increase LNAV/VNAV DA to 2356 feet and all visibilities ½ SM; Increase all MDAs 100 feet and visibility Cat C ¼ SM. Baro-VNAV and VDP NA when using Great Bend altimeter setting.

MISSED APPROACH: Climb to 4300 direct ZUSKI and hold.

AWOS-3PT 118.725	KANSAS CITY CENTER 118.8 322.425	UNICOM 122.8 (CTAF) ①
----------------------------	--	---------------------------------



ELEV 1953	TDZE 1952
-----------	-----------



CATEGORY	A	B	C	D
LPV DA	2202-1	250 (300-1)		NA
LNAV/VNAV DA	2257-1	305 (400-1)		NA
LNAV MDA	2340-1	388 (400-1)		NA
CIRCLING	2380-1 427 (500-1)	2420-1 467 (500-1)	2580-1¾ 627 (700-1¾)	NA

NC-2, 14 MAY 2026 to 11 JUN 2026

NC-2, 14 MAY 2026 to 11 JUN 2026