

| | | | |
|---------------------------------|------------------------|-----------------------------|---|
| WAAS CH 86607 W35A | APP CRS 353° | Rwy Idg TDZE Apt Elev | 5500 1946 1953 |
|---------------------------------|------------------------|-----------------------------|---|

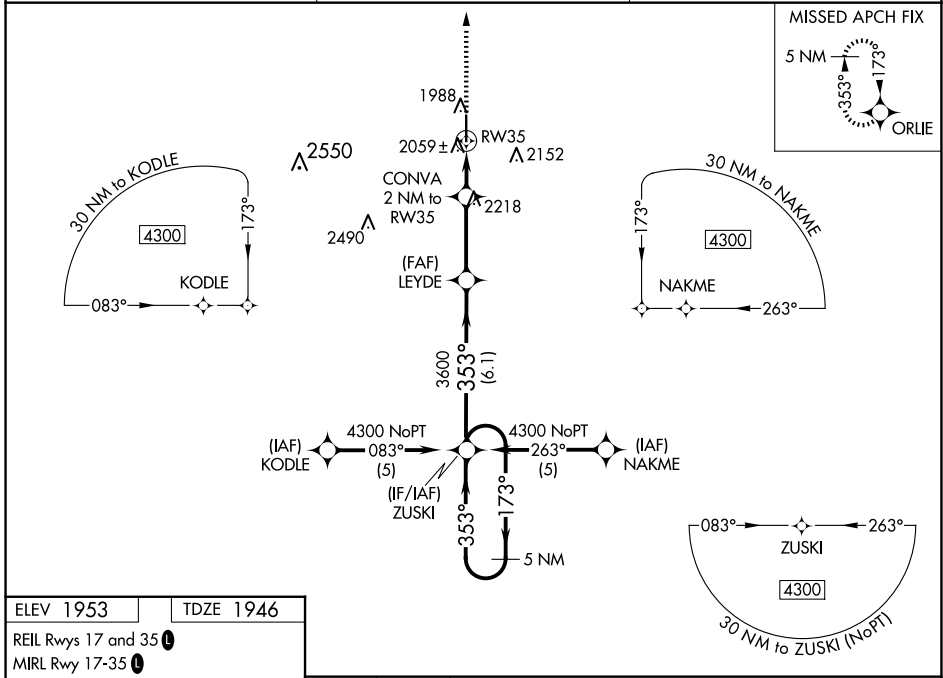
RNAV (GPS) RWY 35

PRATT RGNL (P'TT)

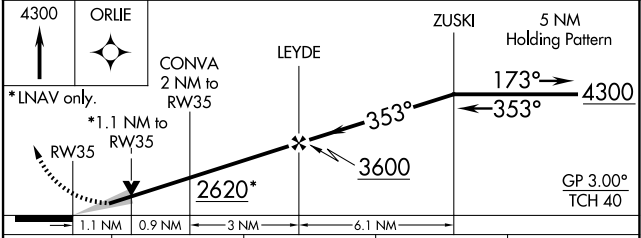
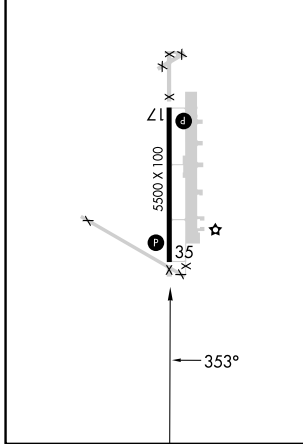
A For uncompensated Baro-VNAV systems, LNAV/VNAV NA below -18°C (0°F) or above 54°C (130°F). DME/DME RNP-0.3 NA. When local altimeter setting not received, use Great Bend altimeter setting: Increase LPV DA to 2295 feet and all visibilities ¼ SM; Increase LNAV/VNAV DA to 2421 feet and all visibilities ½ SM; Increase all MDAs 100 feet and visibility Cat C ¼ SM. Baro-VNAV and VDP NA when using Great Bend altimeter setting.

MISSED APPROACH: Climb to 4300 direct ORLIE and hold.

| | | |
|----------------------------|--|---------------------------------|
| AWOS-3PT 118.725 | KANSAS CITY CENTER 118.8 322.425 | UNICOM 122.8 (CTAF) 0 |
|----------------------------|--|---------------------------------|



| | |
|--------------------|----------------|
| ELEV 1953 | TDZE 1946 |
| REIL Rwy 17 and 35 | MIRL Rwy 17-35 |



| CATEGORY | A | B | C | D |
|--------------|-----------------------|-----------------------|-------------------------|----|
| LPV DA | 2196-1 | 250 (300-1) | | NA |
| LNAV/VNAV DA | 2322-1¼ | 376 (400-1¼) | | NA |
| LNAV MDA | 2320-1 | 374 (400-1) | | NA |
| CIRCLING | 2380-1 427 (500-1) | 2420-1 467 (500-1) | 2580-1¾ 627 (700-1¾) | NA |

NC-2, 14 MAY 2026 to 11 JUN 2026

NC-2, 14 MAY 2026 to 11 JUN 2026