

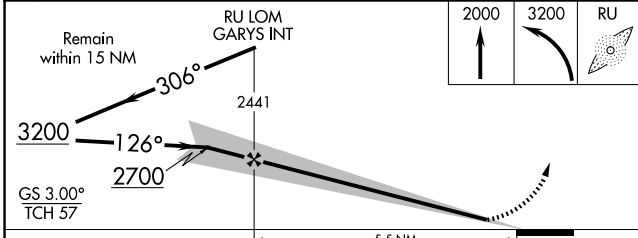
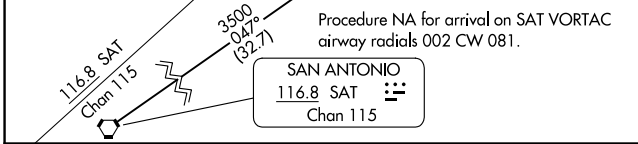
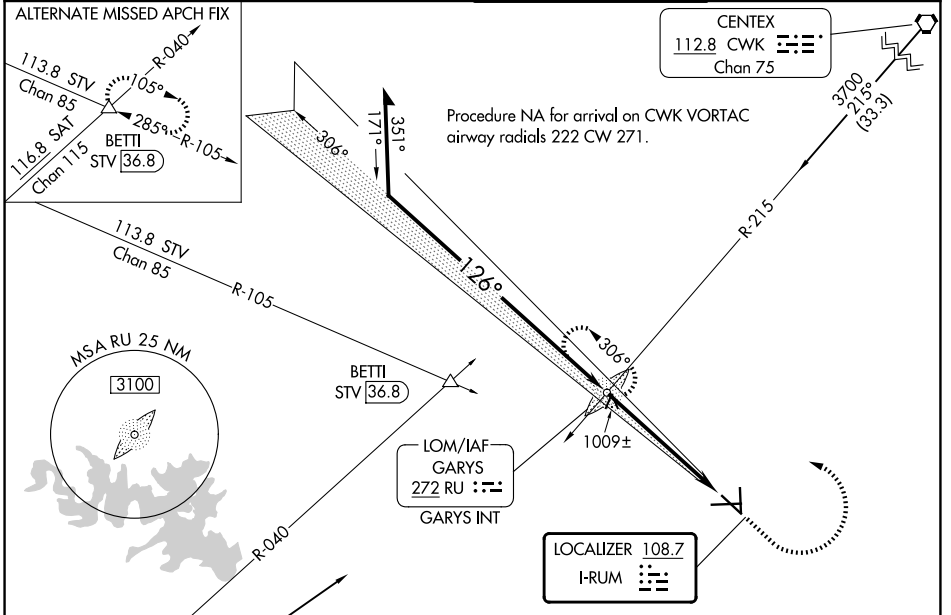
LOC I-RUM <b>108.7</b>	APP CRS <b>126°</b>	Rwy Ldg TDZE Apt Elev <b>5601</b> <b>593</b> <b>595</b>
---------------------------	------------------------	---

# ILS or LOC RWY 13

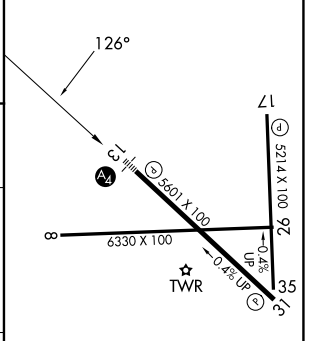
SAN MARCOS RGNL (HYI)

ADF required.	MALS 	MISSED APPROACH: Climb to 2000 then climbing left turn to 3200 direct GARYS LOM/INT and hold.
<p> Circling NA for Cat E southwest of Rwy 13-31. Inop table does not apply to S-ILS 13 all Cats. For inop ALS, increase S-LOC 13 Cat C/D/E visibility to 1/8 SM.</p> <p> NA</p>		

ATIS <b>120.825</b>	AUSTIN APP CON <b>119.0 370.85</b>	SAN MARCOS TOWER * <b>126.825</b> (CTAF)	GND CON <b>120.125</b>
------------------------	---------------------------------------	---	---------------------------



ELEV 595	TDZE 593
----------	----------



CATEGORY	A	B	C	D	E
S-ILS-13	793-3/4 200 (200-3/4)				
S-LOC-13	1260-3/4 667 (700-3/4)		1260-13/4 667 (700-13/4)		
CIRCLING	1260-1 665 (700-1)		1260-17/8 665 (700-17/8)	1320-21/4 725 (800-21/4)	1340-23/4 745 (800-23/4)

MIRL Rwy 8-26, 13-31, and 17-35					
FAF to MAP 5.5 NM					
Knots	60	90	120	150	180
Min:Sec	5:30	3:40	2:45	2:12	1:50

SC-3, 14 MAY 2026 to 11 JUN 2026

SC-3, 14 MAY 2026 to 11 JUN 2026