

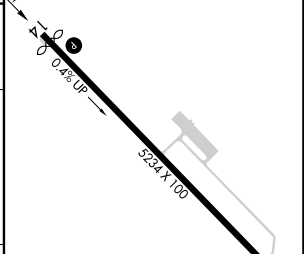
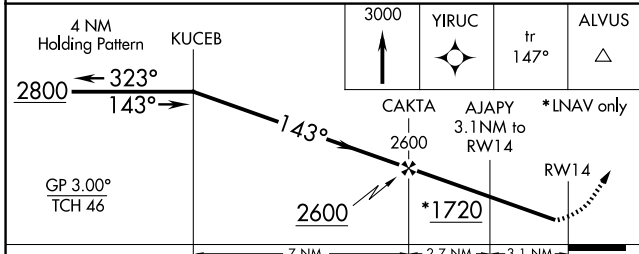
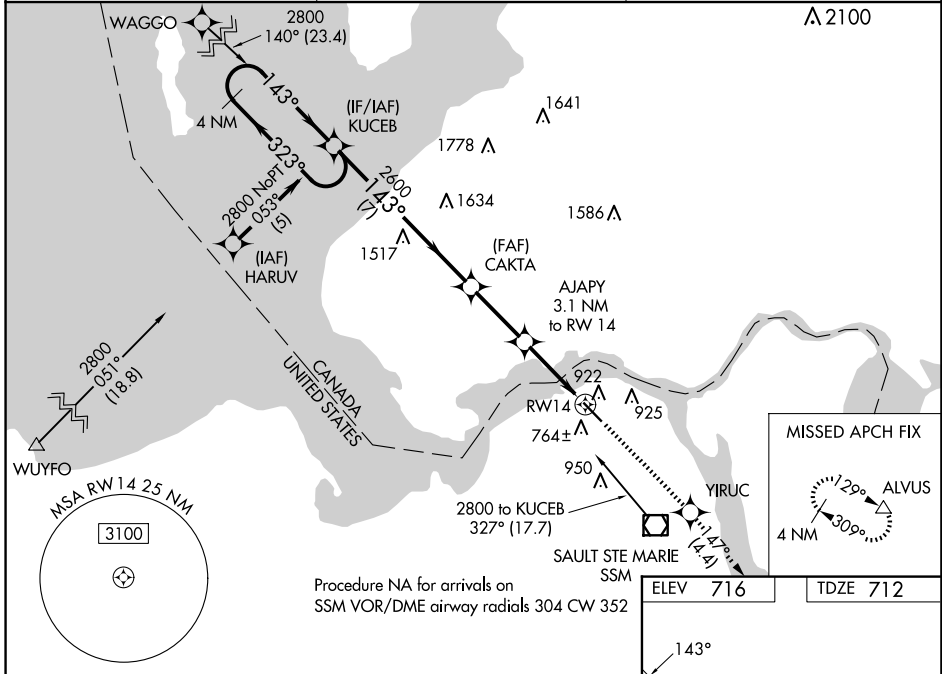
WAAS CH <b>70622</b> <b>W14A</b>	APP CRS <b>143°</b>	Rwy Idg TDZE Apt Elev	<b>5054</b> <b>712</b> <b>716</b>
--	------------------------	-----------------------------	---

# RNAV (GPS) RWY 14

SAULT STE MARIE MUNI/SANDERSON FLD (A.NJ)

RNP APCH.	<p><b>▽</b> For uncompensated Baro-VNAV systems, LNAV/VNAV NA below -16°C or above 54°C.  <b>▲</b> Rwy 14 helicopter visibility reduction below 3/4 SM NA. When local altimeter setting not received, use Chippewa County Intl altimeter setting and increase all DA 45 feet and all MDA 60 feet. Increase LNAV/VNAV all Cats visibilities to 1 1/4 mile and LNAV Cat C visibility to 1 1/8 mile.</p>	MISSED APPROACH: Climb to 3000 direct YIRUC and on track 147° to ALVUS and hold.
-----------	---	---

ASOS <b>118.375</b>	TORONTO CENTER <b>132.65 344.5</b>	UNICOM <b>122.7 (CTAF) 0</b>
------------------------	---------------------------------------	---------------------------------



CATEGORY	A	B	C	D
LPV DA	962-1	250 (300-1)		NA
LNAV/VNAV DA	1137-1 3/8	425 (500-1 3/8)		NA
LNAV MDA	1240-1	528 (600-1)	1240-1 5/8 528 (600-1 5/8)	NA

ELEV 716	TDZE 712
MIRL Rwy 14-32 0	
REIL Rwy 14 and 32 0	

EC-1, 14 MAY 2026 to 11 JUN 2026

EC-1, 14 MAY 2026 to 11 JUN 2026