

LOC/DME I-JAC <b>109.1</b> Chan 28	APP CRS <b>187°</b>	Rwy Ldg TDZE Apt Elev <b>6300</b> <b>6451</b> <b>6451</b>
--	------------------------	--

# ILS Z or LOC Z RWY 19

JACKSON HOLE (JAC)

DME required for LOC only. RNAV 1-GPS required. RADAR required for procedure entry at MOSS.

**▼** Circling NA for Cats A, B, and C east of Rwy 1-19. Inop table does not apply to S-ILS 19\*. Circling NA for Cat D. For inop ALS increase S-LOC 19# Cats C and D visibility to RVR 4500.

**▲** -21°C

**MALS**

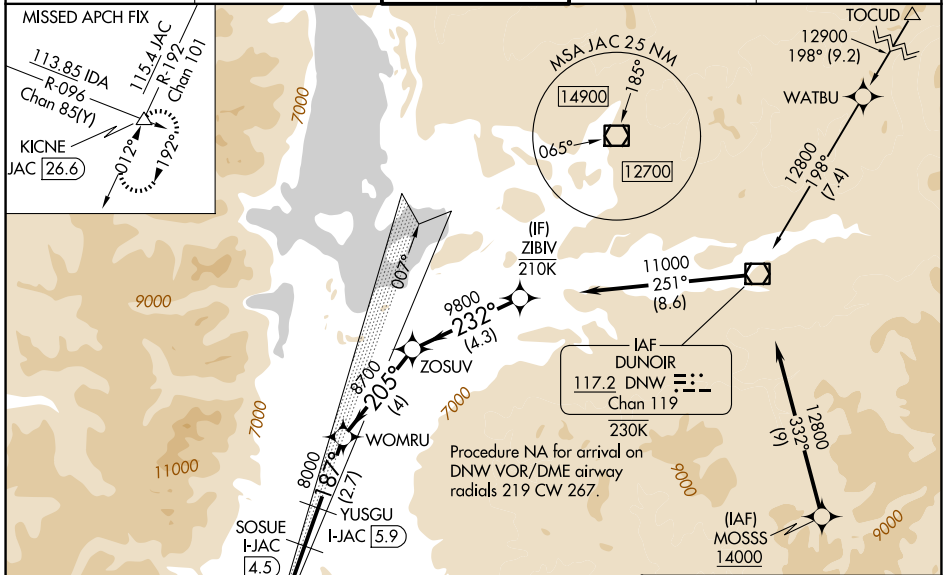
**▲**

MISSED APPROACH: Climb to 6900 then climbing right turn to 14000 on JAC VOR/DME R-192 to KICNE INT/JAC 26.6 DME and hold, continue climb-in-hold to 14000.

\*Missed approach requires minimum climb of 225 feet per NM to 9400; if unable to meet gradient, see ILS Y or LOC Y RWY 19.

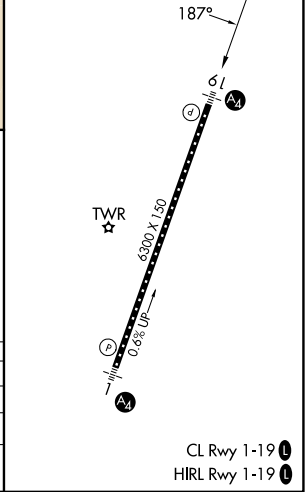
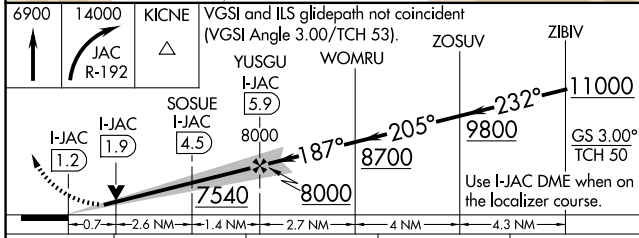
#Missed approach requires minimum climb of 234 feet per NM to 9600; if unable to meet climb gradient, see ILS Y or LOC Y RWY 19.

D-ATIS <b>120.625</b>	SALT LAKE CENTER <b>133.25 285.6</b>	<b>JACKSON TOWER*</b> <b>118.075 (CTAF)</b> <b>📶</b>	GND CON <b>124.55</b>	UNICOM <b>122.95</b>
--------------------------	---	---	--------------------------	-------------------------



JACKSON 115.4 JAC Chan 101	LOCALIZER 109.1 I-JAC Chan 28
----------------------------------	-------------------------------------

ELEV 6451	<b>D</b>	TDZE 6451
-----------	----------	-----------



CATEGORY	A	B	C	D
S-ILS 19*		6651/40	200 (200-¾)	
S-LOC 19#		6720/40	269 (300-¾)	
CIRCLING	6840-1 389 (400-1)	6960-1 509 (600-1)	7440-3 989 (1000-3)	NA