

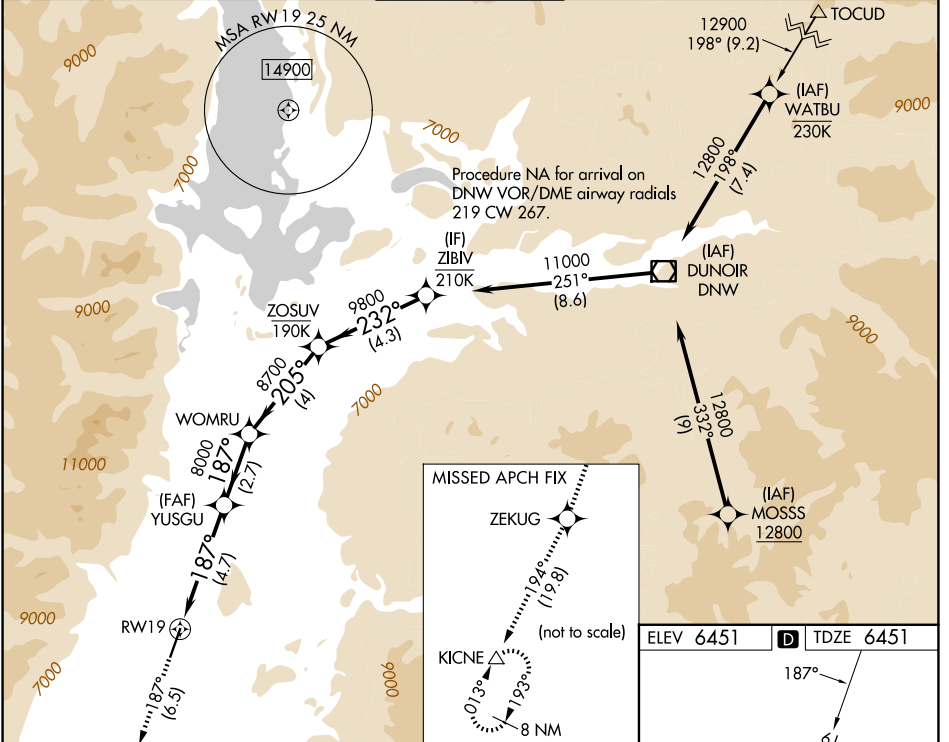
# RNAV (RNP) Y RWY 19

JACKSON HOLE (JAC)

APP CRS	Rwy Ldg	<b>6300</b>
<b>187°</b>	TDZE	<b>6451</b>
	Apt Elev	<b>6451</b>

RNP AR APCH-GPS.	MALS	MISSED APPROACH: Climb to 14000 on track 187° to ZEKUG and on track 194° to KICNE and hold, continue climb-in-hold to 14000. *Missed approach requires minimum climb of 226 feet per NM to 11400. #Missed approach requires minimum climb of 210 feet per NM to 11600.
▼ For uncompensated Baro-VNAV systems, procedure NA below -27°C or above 54°C. For inop ALS, increase RNP 0.30 all Cats visibility to 1¼ SM.	☯	

D-ATIS	SALT LAKE CENTER	JACKSON TOWER*	GND CON	UNICOM
<b>120.625</b>	<b>133.25 285.6</b>	<b>118.075 (CTAF) 0</b>	<b>124.55</b>	<b>122.95</b>



NW-1, 14 MAY 2026 to 11 JUN 2026

NW-1, 14 MAY 2026 to 11 JUN 2026

14000	ZEKUG	KICNE	WOMRU		ZOSUV	ZIBIV
↑ tr 187°	☯	△	tr 194°			11000
			YUSGU			
			8000	8700	9800	
			187°	205°	232°	
			8000			
			4.7 NM	2.7 NM	4 NM	4.3 NM
CATEGORY	A	B	C	D		
RNP 0.11 DA*	6781/40		330 (400-¾)			
RNP 0.30 DA#	6935/60		484 (500-1¼)			
RNP 0.30 DA	7038-1⅓		587 (600-1⅓)			
<b>AUTHORIZATION REQUIRED</b>						

