

APP CRS	Rwy Ldg	6300
006°	TDZE	6431
	Apt Elev	6451

RNAV (RNP) Z RWY 1

JACKSON HOLE (JAC)

RNP AR APCH.

▼ For uncompensated Baro-VNAV systems, procedure NA below -27°C or above 54°C.

☁ -21°C

Inop table does not apply to RNP 0.11* all Cats visibility. For inop ALS, increase RNP 0.30* all Cats visibility to 7/8 SM. Missed approach requires RNP less than 1.0.

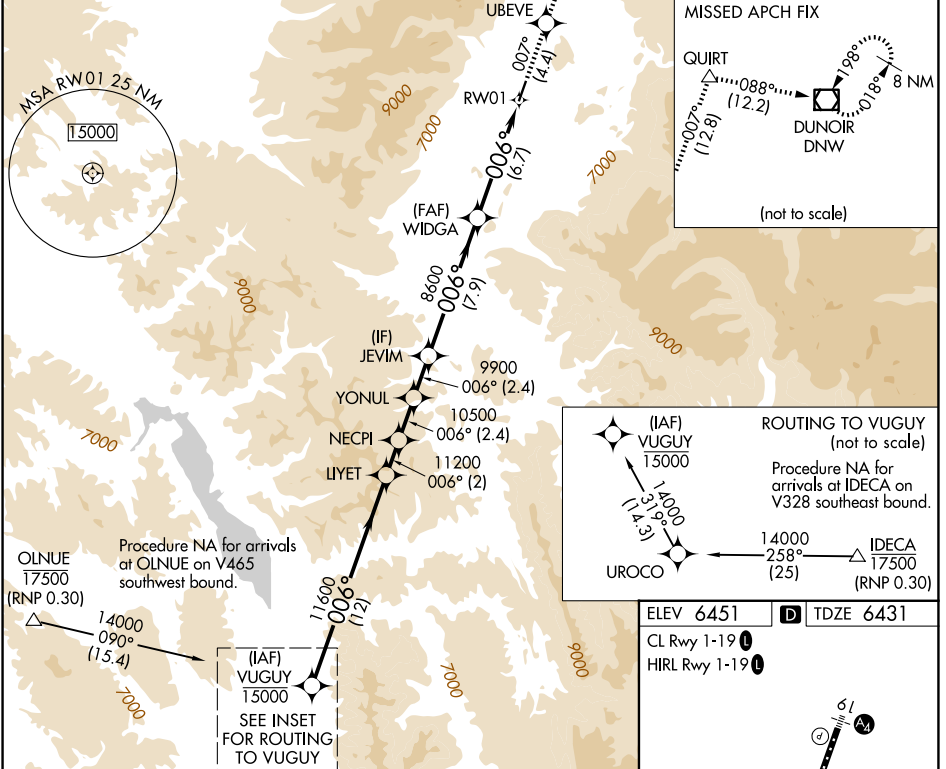
MALS

▲

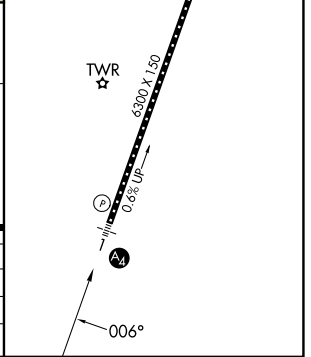
MISSED APPROACH: Climb to 14000 on track 007° to UBEVE and track 007° to QUIRT and track 088° to DNW VOR/DME and hold, continue climb-in-hold to 14000.

* Missed approach requires minimum climb of 330 feet per NM to 8200; if unable to meet climb gradient, see RNAV (RNP) Y RWY 1.

D-ATIS 120.625	SALT LAKE CENTER 133.25 285.6	JACKSON TOWER* 118.075 (CTAF)	GND CON 124.55	UNICOM 122.95
--------------------------	---	--	--------------------------	-------------------------



VUGUY	LIYET	NECP1	UBEVE	tr 007°	QUIRT	tr 088°	DNW
15000	11600	11200	14000	▲	△	□	□
14000		10500	9900	▲	△	□	□
GP 3.00°			8600	▲	△	□	□
TCH 50				▲	△	□	□
	12 NM	2 NM	2.4	2.4	7.9 NM	6.7 NM	
CATEGORY	A	B	C	D			
RNP 0.11 DA*		6690-3/4	259 (300-3/4)				
RNP 0.30 DA*		6743-3/4	312 (300-3/4)				



AUTHORIZATION REQUIRED

NW-1, 14 MAY 2026 to 11 JUN 2026

NW-1, 14 MAY 2026 to 11 JUN 2026