

WAAS CH <b>82437</b> <b>W16A</b>	APP CRS <b>163°</b>	Rwy Ldg TDZE Apt Elev	<b>8203</b> <b>7289</b> <b>7289</b>
--	------------------------	-----------------------------	---

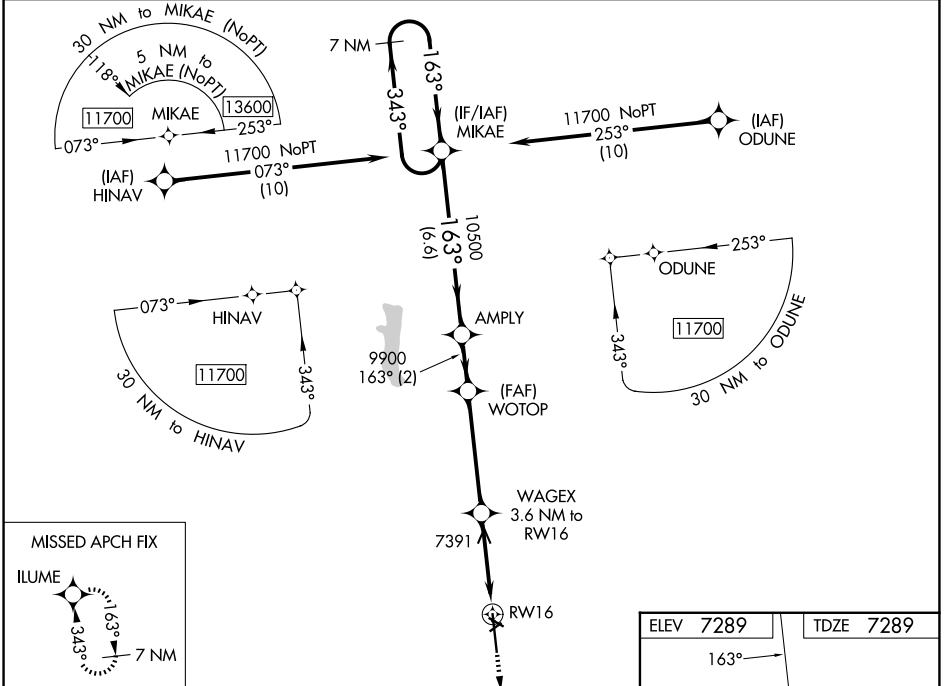
# RNAV (GPS) RWY 16

KEMMERER MUNI (EMM)

**⚠** Baro-VNAV NA when using Evanson altimeter setting. For uncompensated Baro-VNAV systems, LNAV/VNAV NA below -27°C (-16°F) or above 54°C (130°F). DME/DME RNP-0.3 NA. VDP NA when using Evanson altimeter setting. Night landing: Rwy 4, 10, 22, 28 NA. When local altimeter setting not received, use Evanson altimeter setting: Increase all DA 111 feet and visibilities ¼ mile; increase all MDA 120 feet.

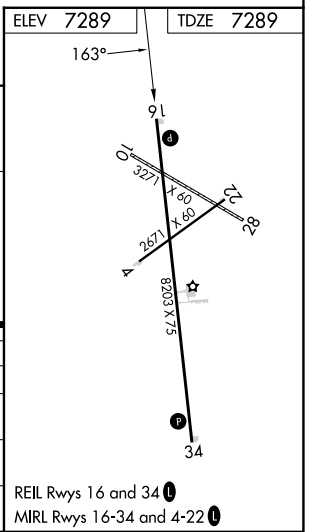
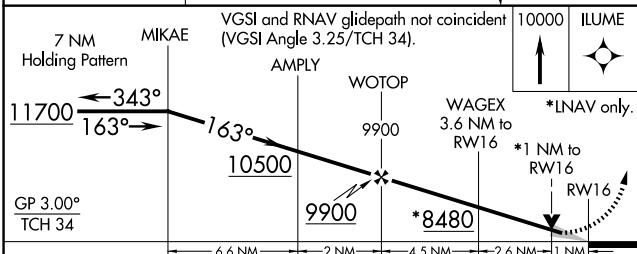
**MISSED APPROACH:**  
Climb to 10000 direct ILUME and hold.

AWOS-3PT <b>119.675</b>	SALT LAKE CITY CENTER <b>124.35 353.5</b>	UNICOM <b>122.8 (CTAF) 0</b>
----------------------------	--	---------------------------------



NW-1, 14 MAY 2026 to 11 JUN 2026

NW-1, 14 MAY 2026 to 11 JUN 2026



CATEGORY	A	B	C	D
LPV DA	7539-1	250 (300-1)		NA
LNAV/VNAV DA	7539-1	250 (300-1)		NA
LNAV MDA	7660-1	371 (400-1)		NA
CIRCLING	7660-1 371 (400-1)	8240-1½ 951 (1000-1½)		NA

REIL Rwy 16 and 34 0  
MIRL Rwy 16-34 and 4-22 0