

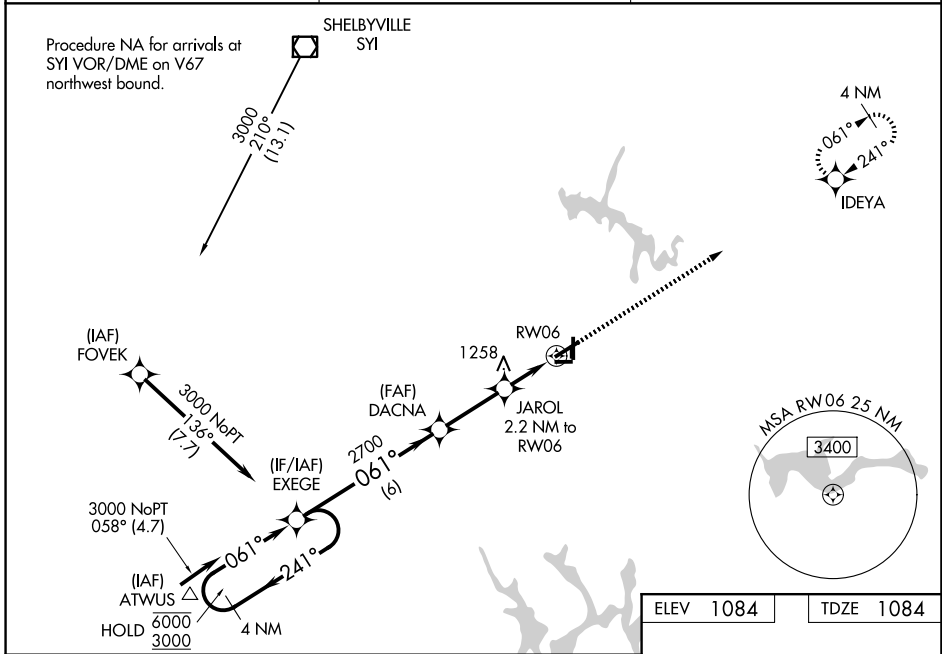
WAAS CH <b>99324</b> <b>W06A</b>	APP CRS <b>061°</b>	Rwy Ldg TDZE Apt Elev	<b>5501</b> <b>1084</b> <b>1084</b>
--	------------------------	-----------------------------	---

# RNAV (GPS) RWY 6

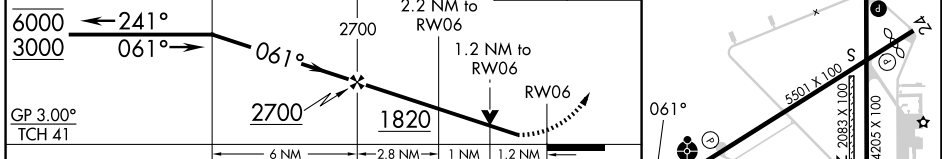
TULLAHOMA RGNL/WM NORTHERN FLD (THA)

RNP APCH - GPS.	<p><b>⚠</b> Circling NA to Rwy 9 and 27. Circling to Rwy 18 and 36 NA at night. Rwy 6 helicopter visibility reduction below <math>\frac{3}{4}</math> SM NA. Inop table does not apply to LPV all Cats and LNAV Cat A/B. For uncompensated Baro-VNAV systems, LNAV/VNAV NA below -17°C or above 54°C. For inop ALS increase LNAV/VNAV Cat C/D visibility to 1<math>\frac{1}{2}</math> SM.</p>	<p>ODALS</p>	<p>MISSED APPROACH: Climb to 3500 direct IDEYA and hold.</p>
-----------------	--	--------------	--

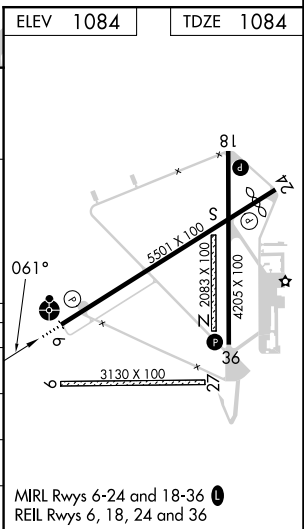
AWOS-3 <b>128.325</b>	MEMPHIS CENTER <b>128.15 323.125</b>	UNICOM <b>123.0 (CTAF) 0</b>
--------------------------	---	---------------------------------



4 NM Holding Pattern	EXEGE	DACNA	JAROL 2.2 NM to RW06	3500	IDEYA
----------------------	-------	-------	----------------------	------	-------



CATEGORY	A	B	C	D
LPV DA		1334-1	250 (300-1)	
LNAV/VNAV DA		1525-1 $\frac{1}{8}$	441 (500-1 $\frac{1}{8}$ )	
LNAV MDA		1500-1	416 (500-1)	
CIRCLING	1540-1 456 (500-1)	1580-1 496 (500-1)	1620-1 $\frac{1}{2}$ 536 (600-1 $\frac{1}{2}$ )	1640-2 556 (600-2)



SE-1, 14 MAY 2026 to 11 JUN 2026

SE-1, 14 MAY 2026 to 11 JUN 2026