

VOR/DME VIH <b>117.7</b> Chan <b>124</b>	APP CRS <b>241°</b>	Rwy Idg TDZE Apt Elev	<b>5500</b> <b>1117</b> <b>1148</b>
--	------------------------	-----------------------------	---

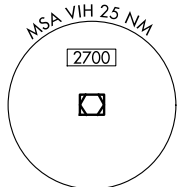
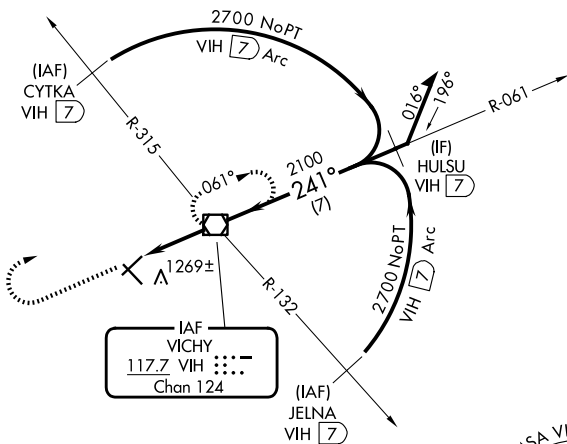
# VOR RWY 22

ROLLA NTL (VIH)

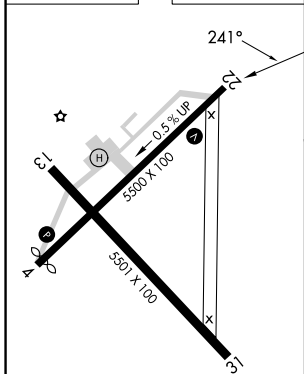
**⚠** When local altimeter setting not received, use Fort Leonard Wood altimeter setting; increase all MDA 80 feet and S-22 Cat D and Circling Cat D visibility ¼ SM. VDP NA with Fort Leonard Wood altimeter setting.

**MISSED APPROACH:** Climb to 2700 then right turn direct VIH VOR/DME and hold.

ASOS <b>119.025</b>	KANSAS CITY CENTER <b>128.35 284.675</b>	UNICOM <b>123.0 (CTAF) 0</b>
------------------------	---	---------------------------------



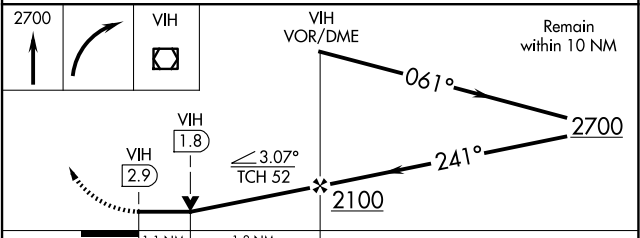
ELEV 1148	TDZE 1117
-----------	-----------



MIRL Rwy 13-31 and 4-22 **0**

FAF to MAP 2.9 NM

Knots	60	90	120	150	180
Min:Sec	2:54	1:56	1:27	1:10	0:58



CATEGORY	A	B	C	D
S-22	1520-1	403 (400-1)	1520-1¼	403 (400-1¼)
CIRCLING	1600-1	452 (500-1)	1600-1½	1740-2 592 (600-2)