

ILS or LOC RWY 22

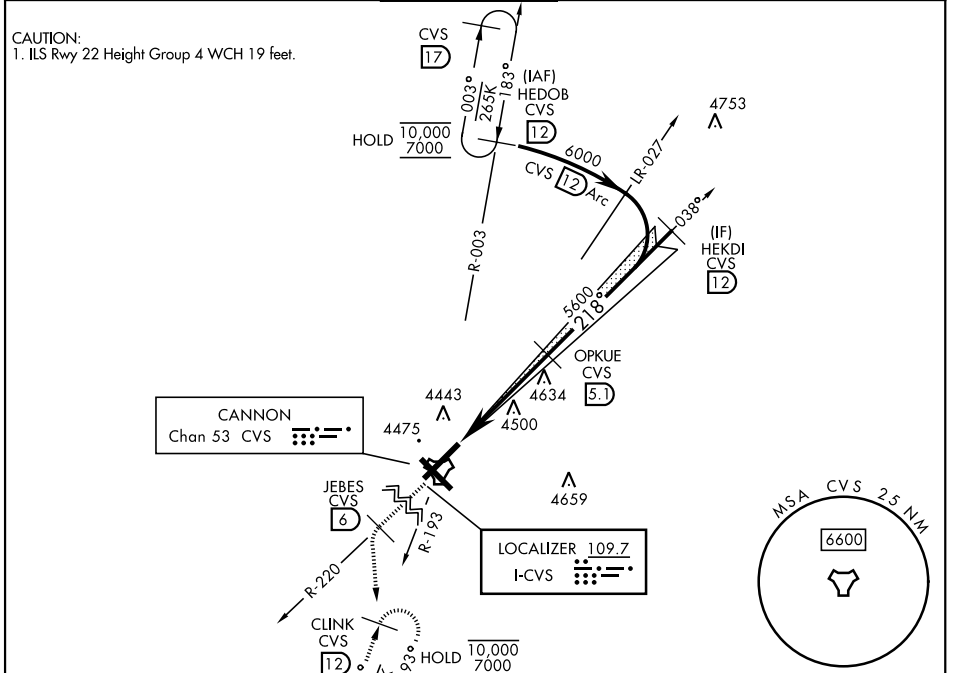
LOC I-CVS 109.7	APCH CRS 218°	Rwy Idg 10,001 TDZE 4295 Arprt Elev 4295
---------------------------	-------------------------	---

[USAF]

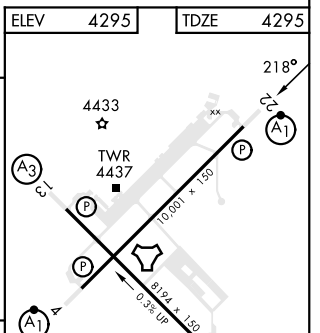
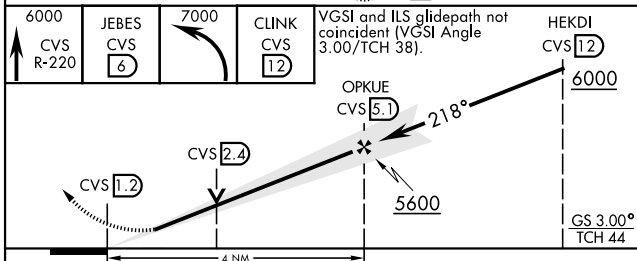
CANNON AFB (KCVS)

Missed approach requires use of RNAV or ATC RADAR monitoring: * When ALS inop, increase RVR to 40 and vis to ¾ miles. ** When ALS inop, increase CAT AB RVR to 55 and vis to 1 mile, CAT CDE vis to 1 ¼ miles.	ALSF-1 	MISSED APPROACH: Climb to 6000 out CVS TACAN R-220 to 6 DME (JEBES) then turn left climbing to 7000 intercept CVS R-193 to 12 DME (CLINK) and hold.
--	------------	---

ATIS 119.1 269.9	CANNON APP CON 118.425 352.1	CANNON TOWER 120.4 270.25	GND CON 121.9 275.8	CLNC DEL 120.2 293.225
----------------------------	--	-------------------------------------	-------------------------------	----------------------------------



EMERG SAFE ALT 100 NM 8000	ELEV 4295	TDZE 4295
----------------------------	-----------	-----------



CATEGORY	A	B	C	D	E
S-ILS 22*	4495/24		200	(200-½)	
S-LOC 22**	4720/24 425 (500-½)		4720/40 425 (500-¾)		
CIRCLING	4840-1 545 (600-1)		4860-1½ 565 (600-1½)	5000-2¼ 705 (800-2¼)	5020-2½ 725 (800-2½)

HIRL all rwys					
FAF to MAP 4 NM					
Knots	60	90	120	150	180
Min:Sec	4:00	2:40	2:00	1:36	1:20

ILS or LOC RWY 22

SW-1, 14 MAY 2026 to 11 JUN 2026

SW-1, 14 MAY 2026 to 11 JUN 2026