

CLOVIS, NEW MEXICO

# RNAV (GPS) RWY 22

WAAS CH 41173 W22A	APCH CRS 218°	Rwy ldg TDZE Arprt Elev	10,001 4295 4295
--------------------------	------------------	-------------------------------	------------------------

(USAF)

CANNON AFB (KCVS)

Missed approach requires use of RNAV or ATC radar monitoring.

ALSF-1

MISSED APPROACH: Climb to 7000 direct JEBES, track 171° to CLINK and hold.

▼ \* When ALS inop, increase RVR to 40, vis to 3/4 mile.  
\*\* When ALS inop, increase vis to 1 1/4 miles.



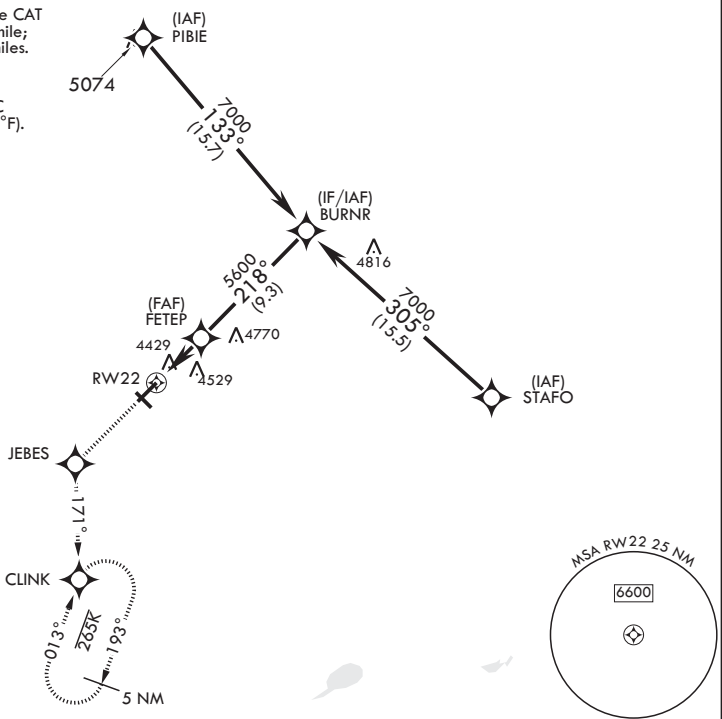
ATIS 119.1 269.9	CANNON APP CON 118.425 352.1	TOWER 120.4 270.25	GND CON 121.9 275.8	CLNC DEL 120.2 293.225
---------------------	---------------------------------	-----------------------	------------------------	---------------------------

\*\*\* When ALS inop, increase CAT  
AB RVR to 55, vis to 1 mile;  
CAT CDE vis to 1 1/4 miles.

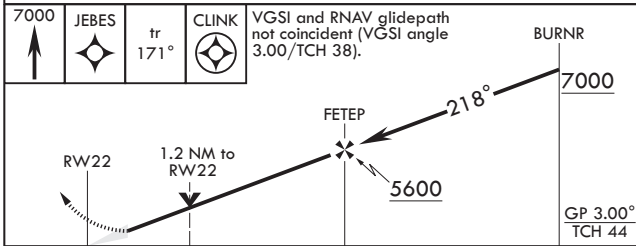
For uncompensated  
Baro-VNAV systems,  
Procedure NA below -23°C  
(-9°F) or above 54°C (130°F).

DME/DME RNP-0.3 NA

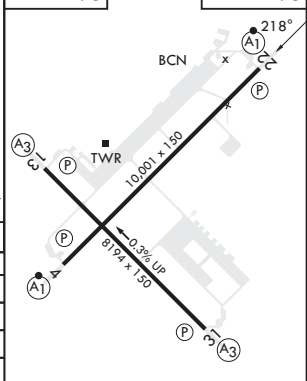
CAUTION: Group  
4 WCH 19ft.



EMERG SAFE ALT 100 NM 9000



ELEV 4295	TDZE 4295
-----------	-----------



CATEGORY	A	B	C	D	E
LPV DA*	4495/24		200	(200-1/2)	
LNAV/VNAV DA**	4720/40		425	(500-3/4)	
LNAV MDA***	4720/24 425 (500-1/2)		4720/40	425	(500-3/4)
CIRCLING	4840-1 545 (600-1)		4860-1 1/2 565 (600-1 1/2)	5000-2 1/4 705 (800-2 1/4)	5020-2 1/2 725 (800-2 1/2)

HIRL all rwys

CLOVIS, NEW MEXICO

34°23'N - 103°19'W

CANNON AFB (KCVS)

Amdt 6 16JUL20

# RNAV (GPS) RWY 22

SW-1, 14 MAY 2026 to 11 JUN 2026

SW-1, 14 MAY 2026 to 11 JUN 2026