

TACAN RWY 22

TACAN CVS Chan 53	APCH CRS 212°	Rwy Idg TDZE Arpt Elev 10,001 4295 4295
-----------------------------	-------------------------	---

[USAF]

CANNON AFB (KCVS)

Missed approach requires use of RNAV or RADAR monitoring.

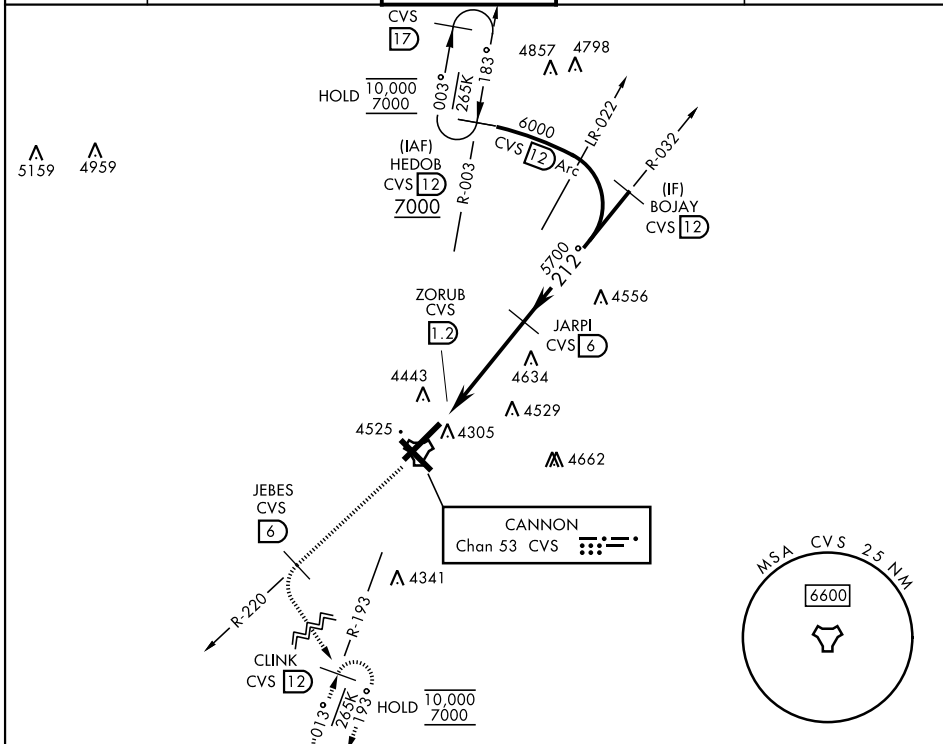
ALSIF-1

MISSED APPROACH: Climb to 6000 out CVS TACAN R-220 to 6 DME (JEBES) then climbing left turn to 7000 intercept CVS R-193 to 12 DME (CLINK) and hold.

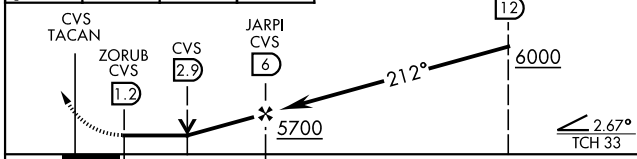
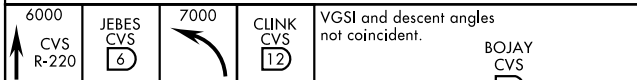
▼ * When ALS inop, increase CAT AB RVR to 55 and vis to 1 mile, increase CAT CDE vis to 1¼ miles.



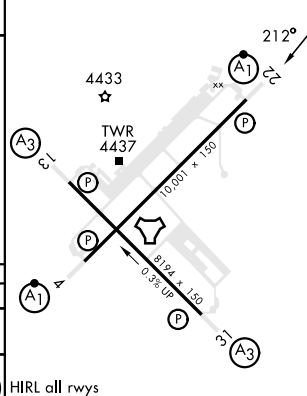
ATIS 119.1 269.9	CANNON APP CON 118.425 352.1	CANNON TOWER 120.4 270.25	GND CON 121.9 275.8	CLNC DEL 120.2 293.225
----------------------------	--	-------------------------------------	-------------------------------	----------------------------------



EMERG SAFE ALT 100 NM 9000



ELEV 4295	TDZE 4295
-----------	-----------



TACAN RWY 22

SW-1, 14 MAY 2026 to 11 JUN 2026

SW-1, 14 MAY 2026 to 11 JUN 2026