

CLOVIS, NEW MEXICO

TACAN RWY 31

TACAN CVS Chan 53	APCH CRS 316°	Rwy ldg TDZE Arprt Elev	8194 4270 4295
----------------------	------------------	-------------------------------	----------------------

(USAF)

CANNON AFB (KCVS)

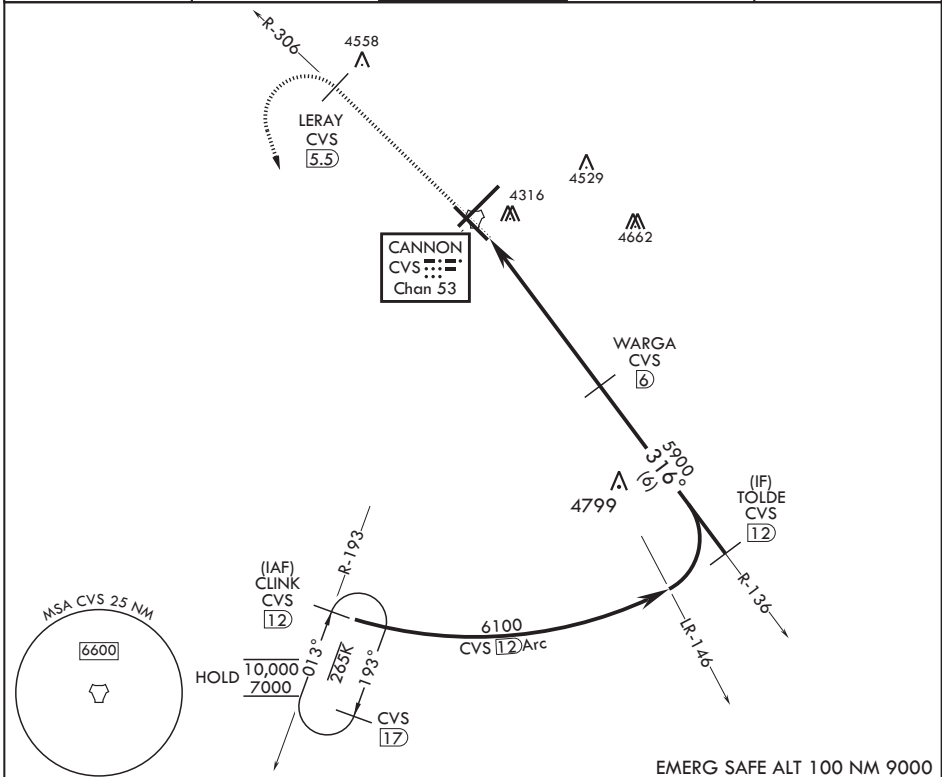
Missed approach requires use of RNAV or ATC radar monitoring.



MISSED APPROACH: Climb to 6000 out CVS TACAN R-306 to 5.5 DME (LERAY) then turn left climbing to 7000 intercept CVS TACAN R-193 to 1.2 DME (CLINK) and hold.

When ALS inop, increase CAT AB vis to 1 mile, CAT CDE increase vis to 1 3/8 miles.

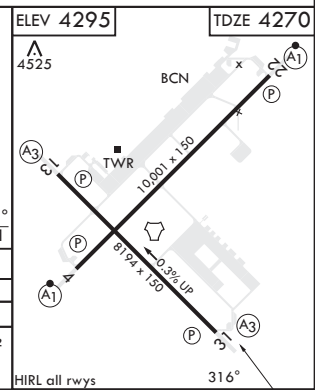
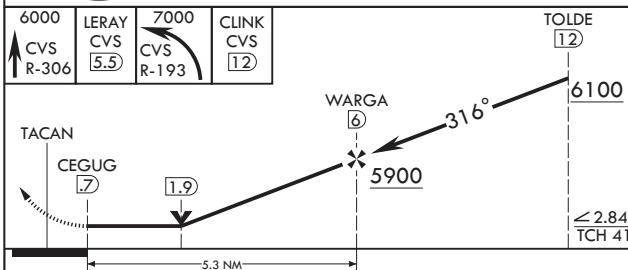
ATIS 119.1 269.9	CANNON APP CON 118.425 352.1	TOWER 120.4 270.25	GND CON 121.9 275.8	CLNC DEL 120.2 293.225
---------------------	---------------------------------	-----------------------	------------------------	---------------------------



SW-1, 14 MAY 2026 to 11 JUN 2026

SW-1, 14 MAY 2026 to 11 JUN 2026

EMERG SAFE ALT 100 NM 9000



CATEGORY	A	B	C	D	E
S-31*	4700-1/2	430 (500-1/2)	4700-3/4	430 (500-3/4)	
CIRCLING	4840-1	545 (600-1)	4860-1 1/2 565 (600-1 1/2)	5000-2 1/4 705 (800-2 1/4)	5020-2 1/2 725 (800-2 1/2)

CLOVIS, NEW MEXICO

34°23'N - 103°19'W

CANNON AFB (KCVS)

Amdt 3 10OCT19

TACAN RWY 31