

LOC/DME I-EVV <b>109.9</b> Chan <b>36</b>	APP CRS <b>221°</b>	Rwy Ldg TDZE <b>422</b> Apt Elev <b>422</b>	<b>8021</b>
---	------------------------	---	-------------

# ILS or LOC RWY 22

EVANSVILLE RGNL (E V V)

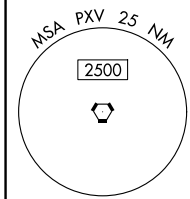
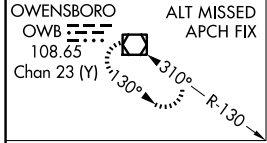
RADAR or DME required for procedure entry at AUGUS.

**⚠** Circling Rwy 9 NA at night. For inop ALS, increase S-LOC 22 Cats C and D visibility to 1 $\frac{3}{4}$  SM. DME minimums: For inop ALS, increase S-LOC 22 Cats C and D visibility to RVR 6000. \* RVR 1800 authorized with use of FD or AP or HUD to DA.

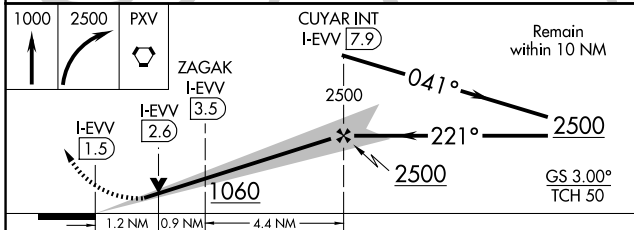
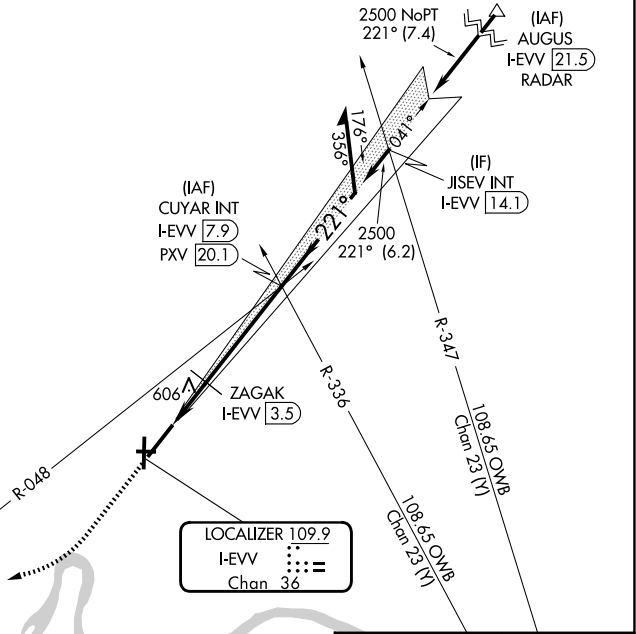
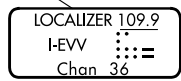
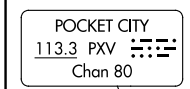


**MISSED APPROACH:** Climb to 1000 then climbing right turn to 2500 direct PXV VORTAC and hold.

ATIS <b>120.2</b>	EVANSVILLE APP CON ★ <b>124.025 290.9</b>	EVANSVILLE TOWER ★ <b>118.7 (CTAF) 257.8</b>	GND CON <b>121.9</b>	UNICOM <b>122.95</b>
----------------------	--	---	-------------------------	-------------------------

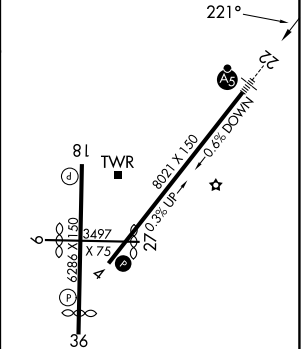


Procedure NA for arrival on PXV VORTAC airway radials 355 CW 151.



CATEGORY	A	B	C	D
S-ILS 22*	622/24		200 (200- $\frac{1}{2}$ )	
S-LOC 22	1060/24	638 (700- $\frac{1}{2}$ )	1060-1 $\frac{3}{8}$	638 (700-1 $\frac{3}{8}$ )
CIRCLING	1060-1	638 (700-1)	1060-1 $\frac{3}{4}$ 638 (700-1 $\frac{3}{4}$ )	1060-2 638 (700-2)
ZAGAK FIX MINIMUMS (DME REQUIRED)				
S-LOC 22	840/24	418 (500- $\frac{1}{2}$ )	840/40	418 (500- $\frac{3}{4}$ )
CIRCLING	920-1 498 (500-1)	1040-1 618 (700-1)	1040-1 $\frac{3}{4}$ 618 (700-1 $\frac{3}{4}$ )	1040-2 618 (700-2)

ELEV <b>422</b>	<b>D</b>	TDZE <b>422</b>
-----------------	----------	-----------------



HRL Rwy 4-22 and 18-36					
REIL Rwy 4, 18, and 36					
MIRL Rwy 9-27					
FAF to MAP 6.4 NM					
Knots	60	90	120	150	180
Min:Sec	6:24	4:16	3:12	2:34	2:08

EC-2, 14 MAY 2026 to 11 JUN 2026

EC-2, 14 MAY 2026 to 11 JUN 2026