

WAAS CH 50421 W18A	APP CRS 184°	Rwy Ldg TDZE Apt Elev	5498 396 422
--	------------------------	-----------------------------	---

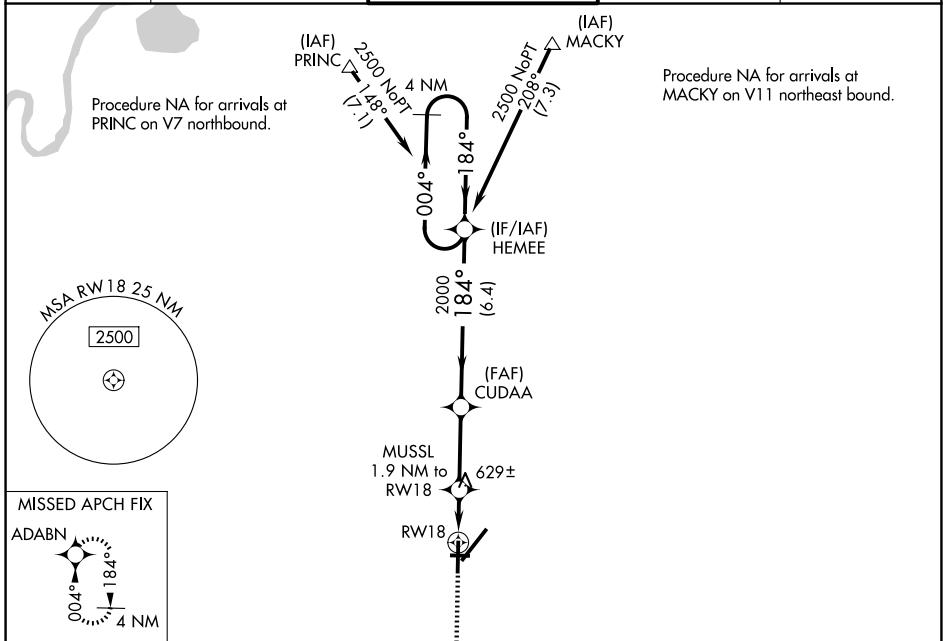
RNAV (GPS) RWY 18

EVANSVILLE RGNL (E V V)

ASR For uncompensated Baro-VNAV systems, LNAV/VNAV NA below -15°C (5°F) or above 54°C (130°F). DME/DME RNP-0.3 NA. Circling Rwy 9 NA at night. Helicopter visibility reduction below ¾ SM NA.

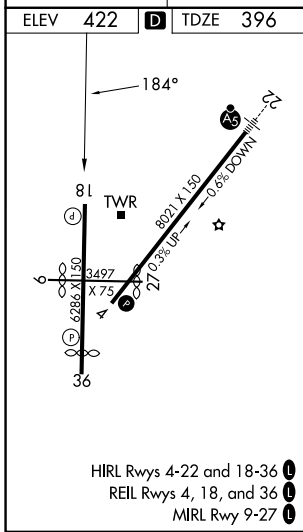
MISSED APPROACH: Climb to 2500 direct ADABN and hold.

ATIS 120.2	EVANSVILLE APP CON ★ 124.025 290.9	EVANSVILLE TOWER ★ 118.7(CTAF) 257.8	GND CON 121.9	UNICOM 122.95
----------------------	--	--	-------------------------	-------------------------



EC-2, 14 MAY 2026 to 11 JUN 2026

EC-2, 14 MAY 2026 to 11 JUN 2026



2500	ADABN	VGSI and RNAV glidepath not coincident (VGSI Angle 3.00/TCH 49).	4 NM Holding Pattern	
		MUSSL 1.9 NM to RWY 18	HEMEE	
		*1.1 NM to RWY 18	CUDAA	
		*1060	2000	
		1.1 0.8 3 NM 6.4 NM	2500	
			GP 3.00° TCH 60	
CATEGORY	A	B	C	D
LPV DA		596-¾	200 (200-¾)	
LNAV/VNAV DA		931-1¾	535 (600-1¾)	
LNAV MDA	880-1	484 (500-1)	880-1⅜	484 (500-1⅜)
CIRCLING	920-1 498 (500-1)	1040-1 618 (700-1)	1040-1¾ 618 (700-1¾)	1040-2 618 (700-2)