

WAAS CH 42512 W22A	APP CRS 221°	Rwy Ldg TDZE Apt Elev	8021 422 422
--	------------------------	-----------------------------	---

RNAV (GPS) RWY 22

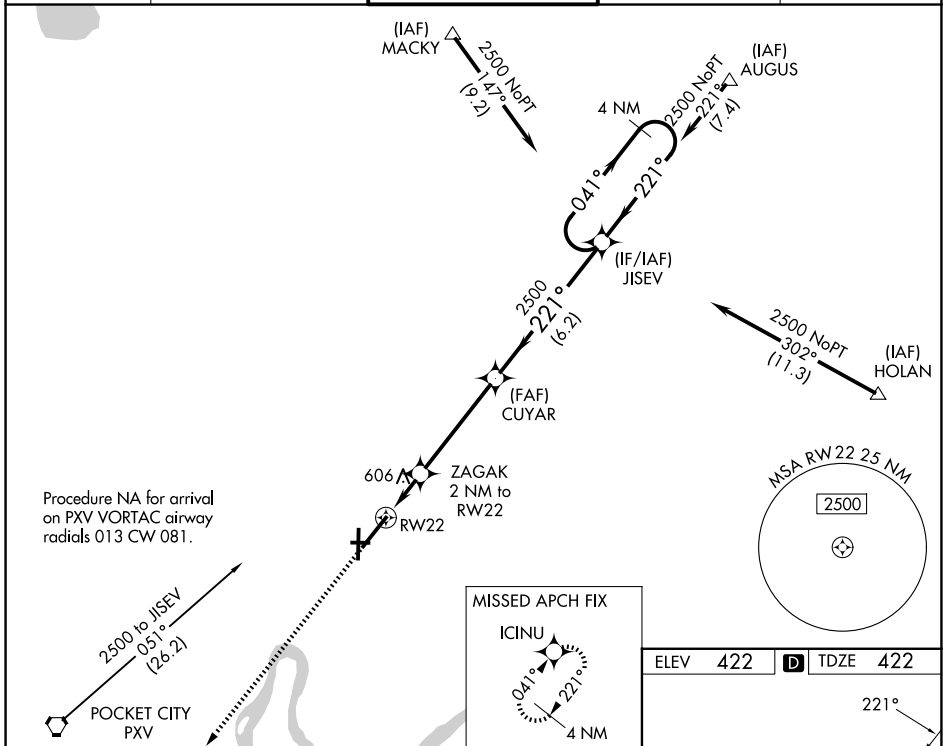
EVANSVILLE RGNL (EVV)

ASR For uncompensated Baro-VNAV systems, LNAV/VNAV NA below -15°C (5°F) or above 54°C (130°F). DME/DME RNP-0.3 NA. Circling Rwy 9 NA at night.
**** RVR 1800 authorized with the use of FD or AP or HUD to DA.**

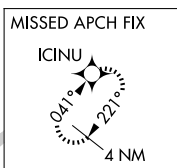


MISSED APPROACH:
Climb to 2500 direct ICINU and hold.

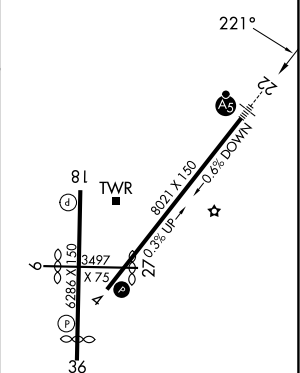
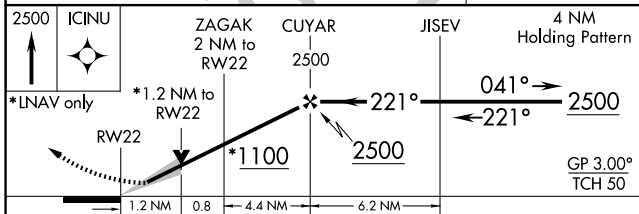
ATIS 120.2	EVANSVILLE APP CON ★ 124.025 290.9	EVANSVILLE TOWER ★ 118.7 (CTAF) 0 257.8	GND CON 121.9	UNICOM 122.95
----------------------	--	---	-------------------------	-------------------------



Procedure NA for arrival on PXV VORTAC airway radials 013 CW 081.



ELEV 422	D TDZE 422
----------	-------------------



CATEGORY	A	B	C	D
LPV DA		**622/24	200 (200-½)	
LNAV/VNAV DA		840/45	418 (500-¾)	
LNAV MDA	860/24	438 (500-½)	860/40	438 (500-¾)
CIRCLING	920-1 498 (500-1)	1040-1 618 (700-1)	1040-1¾ 618 (700-1¾)	1040-2 618 (700-2)

HIRL Rwy 4-22 and 18-36
 REIL Rwy 4, 18, and 36
 MIRL Rwy 9-27

EC-2, 14 MAY 2026 to 11 JUN 2026

EC-2, 14 MAY 2026 to 11 JUN 2026