

WAAS CH <b>90421</b> <b>W36A</b>	APP CRS <b>004°</b>	Rwy Ldg TDZE Apt Elev	<b>5497</b> <b>384</b> <b>422</b>
--	------------------------	-----------------------------	---

# RNAV (GPS) RWY 36

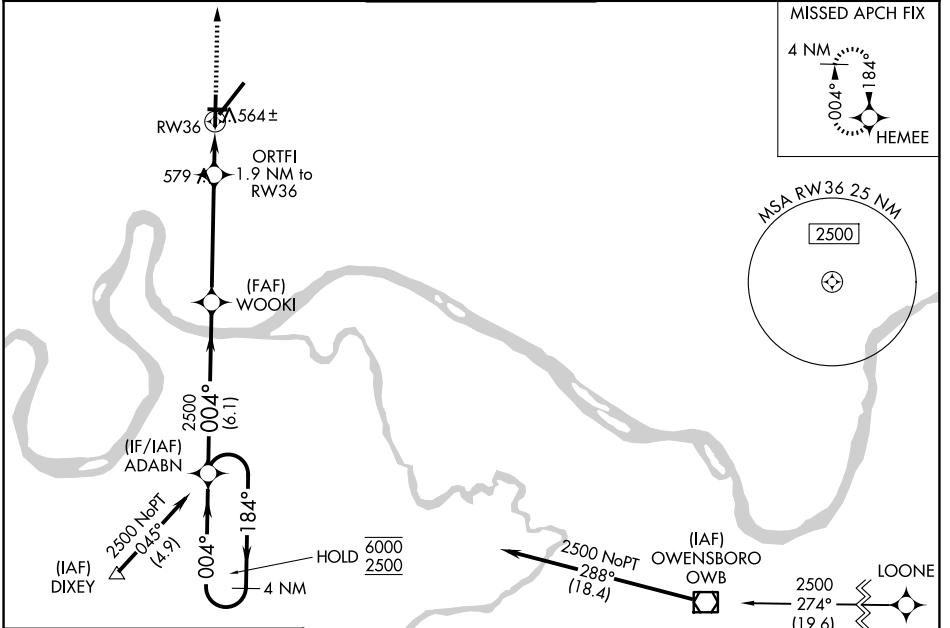
EVANSVILLE RGNL (EVV)

RNP APCH - GPS.

**ASR** For uncompensated Baro-VNAV systems, LNAV/VNAV NA below -13°C or above 54°C. Rwy 36 helicopter visibility reduction below 3/4 SM NA. Circling Rwy 9 NA at night.

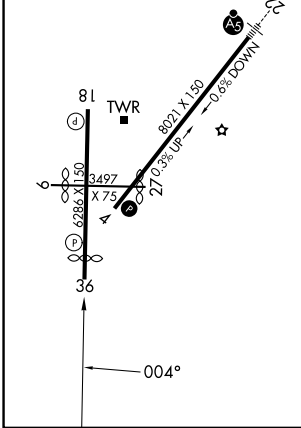
MISSED APPROACH: Climb to 2500 direct HEMEE and hold.

ATIS <b>120.2</b>	EVANSVILLE APP CON ★ <b>124.025 290.9</b>	EVANSVILLE TOWER ★ <b>118.7</b> (CTAF) <b>257.8</b>	GND CON <b>121.9</b>	UNICOM <b>122.95</b>
----------------------	--	--	-------------------------	-------------------------

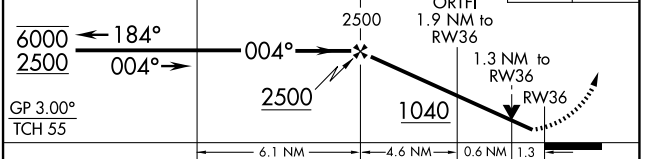


ELEV 422	<b>D</b>	TDZE 384
----------	----------	----------

HIRL Rwy 4-22 and 18-36  
REIL Rwy 4, 18, and 36  
MIRL Rwy 9-27



4 NM Holding Pattern  
VGSi and RNAV glidepath not coincident (VGSi Angle 3.00/TCH 30).  
2500 HEMEE



CATEGORY	A	B	C	D
LPV DA	640-3/4		256 (300-3/4)	
LNAV/VNAV DA	891-1 3/8		507 (500-1 3/8)	
LNAV MDA	820-1	436 (400-1)	820-1 1/4	436 (400-1 1/4)
CIRCLING	920-1 498 (500-1)	1040-1 618 (700-1)	1040-1 3/4 618 (700-1 3/4)	1040-2 618 (700-2)

EC-2, 14 MAY 2026 to 11 JUN 2026

EC-2, 14 MAY 2026 to 11 JUN 2026