

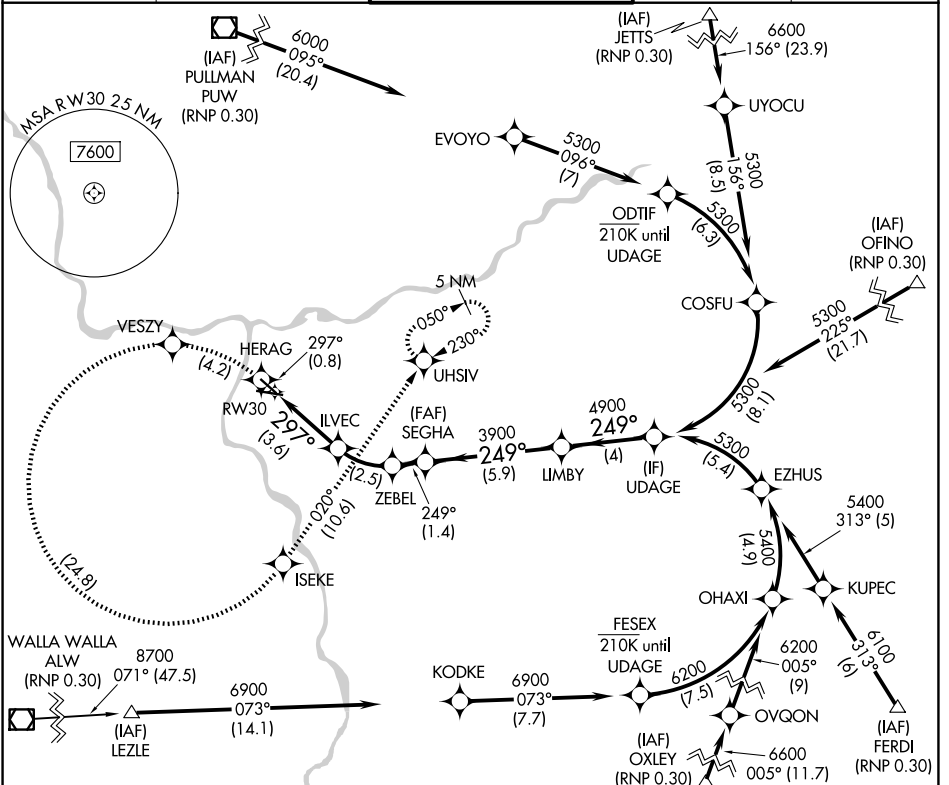
APP CRS	Rwy Ldg	4750
297°	TDZE	1439
	Apt Elev	1442

RNAV (RNP) RWY 30

LEWISTON/NEZ PERCE COUNTY (LWS)

RNP AR APCH-GPS.	MISSED APPROACH: Climb to 6000 on track 297° to HERAG then left turn to VESZY then left turn to ISEKE and track 020° to UHSIV and hold.
<p>▼ For uncompensated Baro-VNAV systems, procedure NA below -12°C or above 54°C. Missed approach requires RNP less than RNP 1.00.</p>	

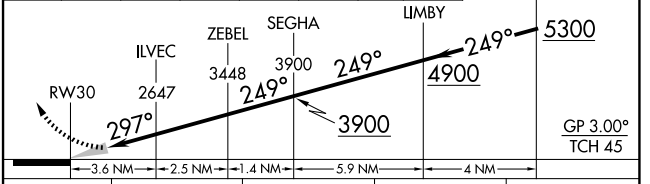
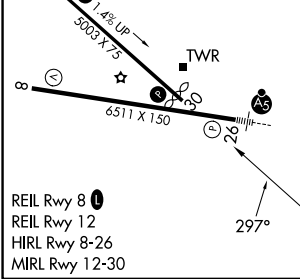
ASOS 135.575	SEATTLE CENTER 123.95 290.55	LEWISTON TOWER ★ 119.4 (CTAF) 318.8	GND CON 121.9	UNICOM 122.95
------------------------	--	---	-------------------------	-------------------------



NW-1, 14 MAY 2026 to 11 JUN 2026

NW-1, 14 MAY 2026 to 11 JUN 2026

ELEV 1442	D TDZE 1439	6000	HERAG	VESZY	ISEKE	UHSIV	UDAGE
		↑	↙	↙	↙	tr 020°	



CATEGORY	A	B	C	D
RNP 0.30 DA	1781-1 342 (400-1)			

AUTHORIZATION REQUIRED