

RNAV (RNP) Z RWY 12

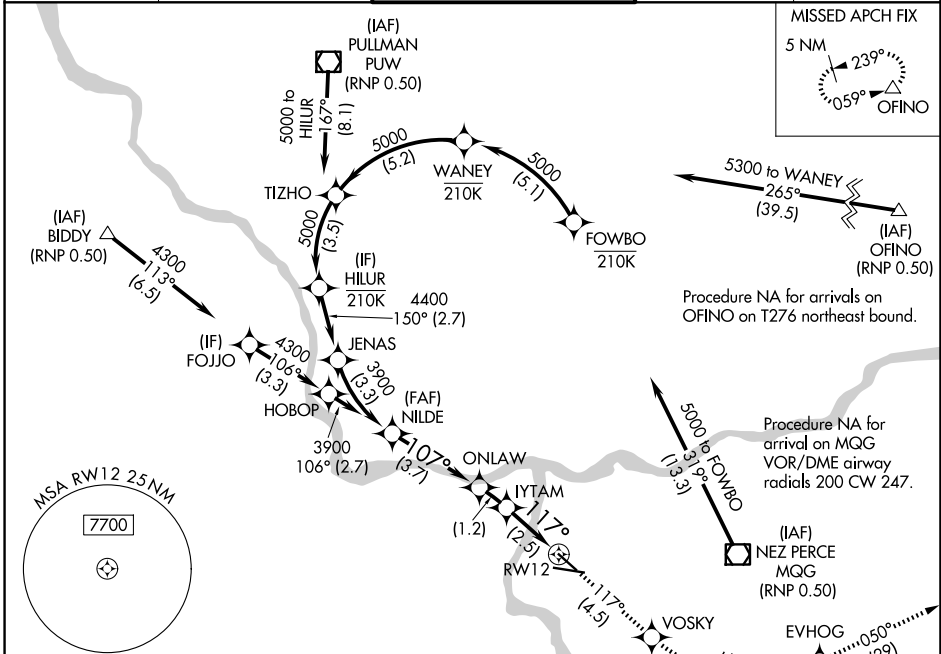
LEWISTON/NEZ PERCE COUNTY (LWS)

APP CRS 117°	Rwy Ldg 4750
	TDZE 1417
	Apt Elev 1442

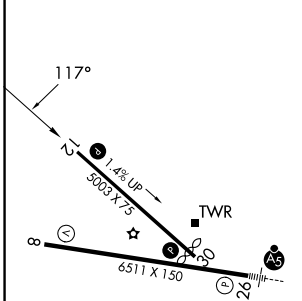
RNP AR APCH-GPS.
 ▼ For uncompensated Baro-VNAV systems, procedure NA below -12°C or above 54°C.

MISSED APPROACH: Climb to 6000 on track 117° to VOSKY then left turn 6000 to EVHOG and on track 050° to OFINO and hold.
 *Missed approach requires minium climb of 260 feet per NM to 3400.

ASOS 135.575	SEATTLE CENTER 123.95 290.55	LEWISTON TOWER ★ 119.4 (CTAF) 0 318.8	GND CON 121.9	UNICOM 122.95
------------------------	--	---	-------------------------	-------------------------

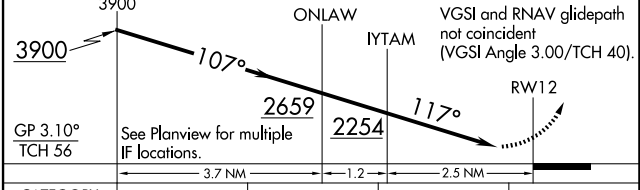


ELEV 1442	D	TDZE 1417
------------------	----------	------------------



- REIL Rwy 8
- REIL Rwy 12
- HIRL Rwy 8-26
- MIRL Rwy 12-30

6000	VOSKY	6000	EVHOG	tr 050°	OFINO
------	-------	------	-------	---------	-------



CATEGORY	A	B	C	D
RNP 0.30 DA*	1685-7 ⁷ / ₈		268 (300-7 ⁷ / ₈)	
RNP 0.30 DA	1889-1 ³ / ₈		472 (500-1 ³ / ₈)	

AUTHORIZATION REQUIRED

NW-1, 14 MAY 2026 to 11 JUN 2026

NW-1, 14 MAY 2026 to 11 JUN 2026