

APP CRS	Rwy Ldg	<b>6511</b>
<b>084°</b>	TDZE	<b>1440</b>
	Apt Elev	<b>1442</b>

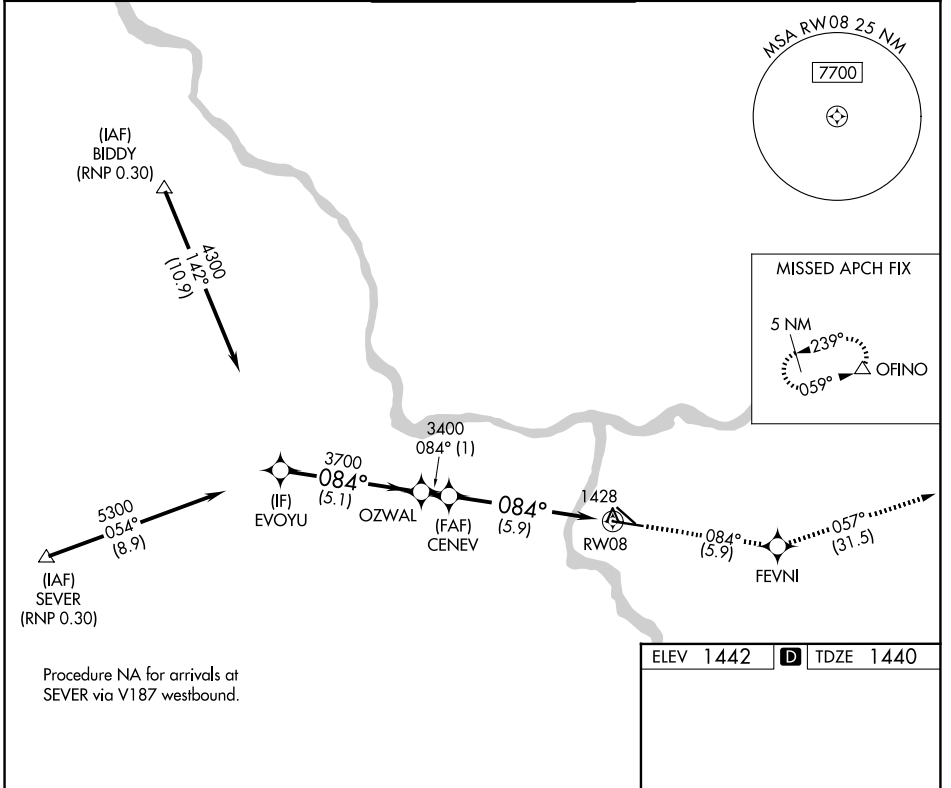
# RNAV (RNP) Z RWY 8

LEWISTON/NEZ PERCE COUNTY (LWS)

**GPS required.** For uncompensated Baro-VNAV systems, procedure NA below -16°C (3°F) or above 46°C (115°F). When VGSI inop, procedure NA at night.

**MISSED APPROACH:** Climb to 6000 via track 084° to FEVNI and via track 057° to OFINO and hold.

ASOS <b>135.575</b>	SEATTLE CENTER <b>123.95 290.55</b>	LEWISTON TOWER ★ <b>119.4 (CTAF) 0 318.8</b>	GND CON <b>121.9</b>	UNICOM <b>122.95</b>
------------------------	--	---	-------------------------	-------------------------



NW-1, 14 MAY 2026 to 11 JUN 2026

NW-1, 14 MAY 2026 to 11 JUN 2026

ELEV 1442 TDZE 1440

Procedure NA for arrivals at SEVER via V187 westbound.

VGSI and RNAV glidepath not coincident (VGSI Angle 3.00/TCH 45).

6000	FEVNI	OFINO
↑ tr 084°	☆ tr 057°	△

Procedure Turn NA

GP 3.00° TCH 55

5.1 NM | 1 NM | 5.9 NM

CATEGORY: A B C D

RNP 0.30 DA: 1752-1 312 (400-1)

**AUTHORIZATION REQUIRED**

REIL Rwy 8  
REIL Rwy 12  
HIRL Rwy 8-26  
MIRL Rwy 12-30