

WAAS CH 97600 W08A	APP CRS 084°	Rwy Ldg TDZE 1440 Apt Elev 1442	6511
--	------------------------	---	-------------

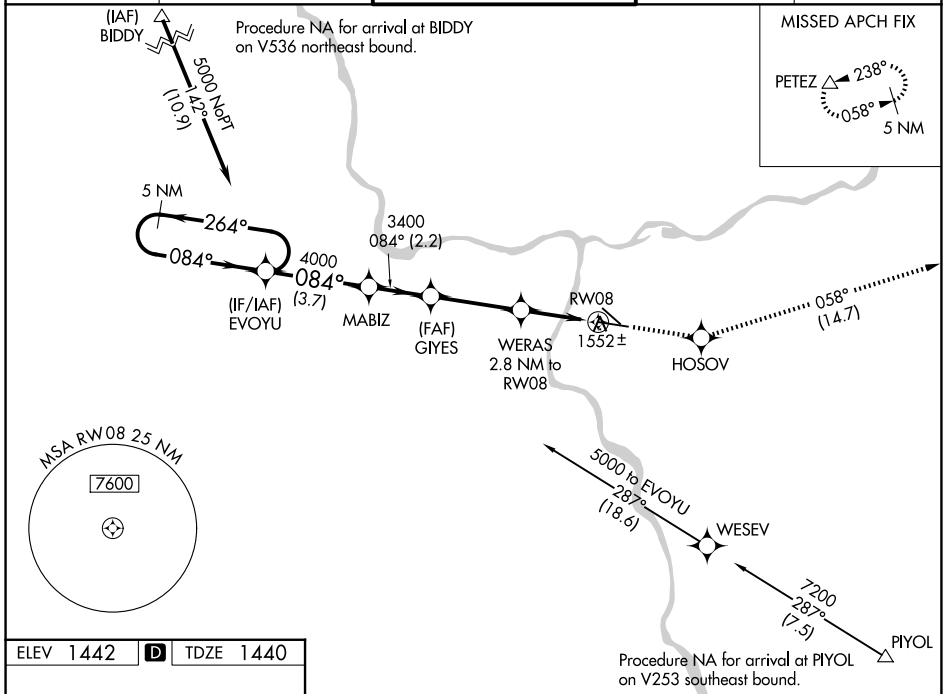
RNAV (GPS) Y RWY 8

LEWISTON/NEZ PERCE COUNTY (LWS)

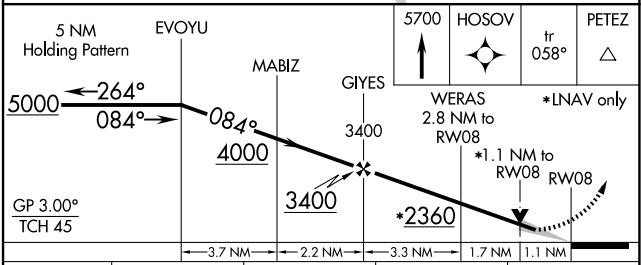
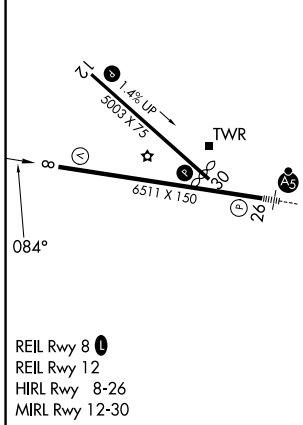
⚠ For uncompensated Baro-VNAV systems, LNAV/VNAV NA below -1.4°C (7°F) or above 34°C (93°F). DME/DME RNP-0.3 NA.

MISSED APPROACH: Climb to 5700 direct HOSOVO and on track 058° to PETEZ and hold, continue climb-in-hold to 5700.

ASOS 135.575	SEATTLE CENTER 123.95 290.55	LEWISTON TOWER ★ 119.4 (CTAF) 0 318.8	GND CON 121.9	UNICOM 122.95
------------------------	--	---	-------------------------	-------------------------



ELEV 1442	D	TDZE 1440
------------------	----------	------------------



CATEGORY	A	B	C	D
LPV DA	1690- ³ / ₄ 250 (300- ³ / ₄)			
LNAV/VNAV DA	1736-1 296 (300-1)			
LNAV MDA	1820-1	380 (400-1)	1820-1 ¹ / ₈	380 (400-1 ¹ / ₈)
CIRCLING	2000-1	558 (600-1)	2280-2 ¹ / ₂ 838 (900-2 ¹ / ₂)	2500-3 1058 (1100-3)

NW-1, 14 MAY 2026 to 11 JUN 2026

NW-1, 14 MAY 2026 to 11 JUN 2026