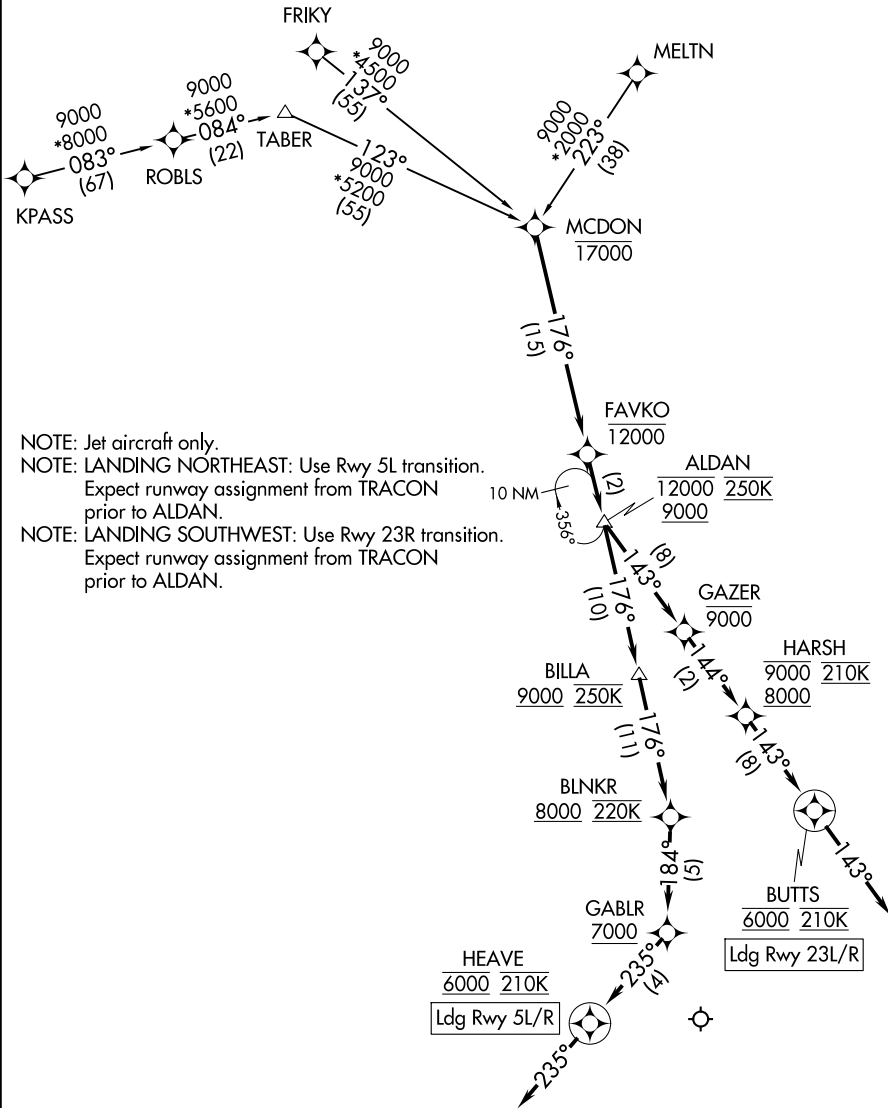


ALDAN FOUR ARRIVAL (RNAV)

RALEIGH APP CON
127.675 307.9
D-ATIS
123.8

RNAV 1 - DME/DME IRU or GPS.
RADAR required.



NOTE: Jet aircraft only.
 NOTE: LANDING NORTHEAST: Use Rwy 5L transition. Expect runway assignment from TRACON prior to ALDAN.
 NOTE: LANDING SOUTHWEST: Use Rwy 23R transition. Expect runway assignment from TRACON prior to ALDAN.

SE-2, 14 MAY 2026 to 11 JUN 2026

SE-2, 14 MAY 2026 to 11 JUN 2026

(CONTINUED ON FOLLOWING PAGE)

NOTE: Chart not to scale.

ALDAN FOUR ARRIVAL (RNAV)

(MCDON.ALDAN4) 25JAN24

ALDAN FOUR ARRIVAL (RNAV)

ARRIVAL ROUTE DESCRIPTION

FRIKY TRANSITION (FRIKY.ALDAN4)
KPASS TRANSITION (KPASS.ALDAN4)
MELTN TRANSITION (MELTN.ALDAN4)

From MCDON on track 176° to cross FAVKO at or below 12000, then on track 176° to cross ALDAN between 9000 and 12000 and at 250K.

LANDING RUNWAYS 5L/R: From ALDAN on track 176° to cross BILLA at or above 9000, then on track 176° to cross BLNKR at or above 8000 and at 220K, then on track 184° to cross GABLR at or above 7000, then on track 235° to cross HEAVE at 6000 and at 210K, then on track 235°. Expect RNP Rwy 5L approach. Non-RNP aircraft: Expect RADAR vectors to final approach course.

LANDING RUNWAYS 23L/R: From ALDAN on track 143° to cross GAZER at or below 9000, then on track 144° to cross HARSH between 8000 and 9000 and at 210K, then on track 143° to cross BUTTS at 6000 and at 210K, then on track 143°. Expect ILS or RNAV Rwy 23L or Rwy 23R approach.

SE-2, 14 MAY 2026 to 11 JUN 2026

SE-2, 14 MAY 2026 to 11 JUN 2026