

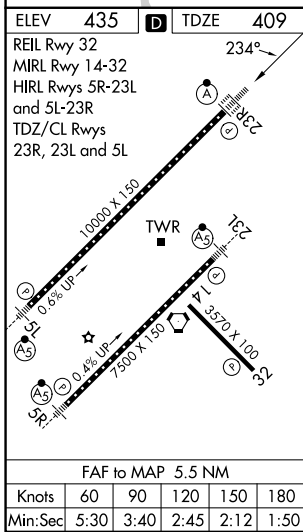
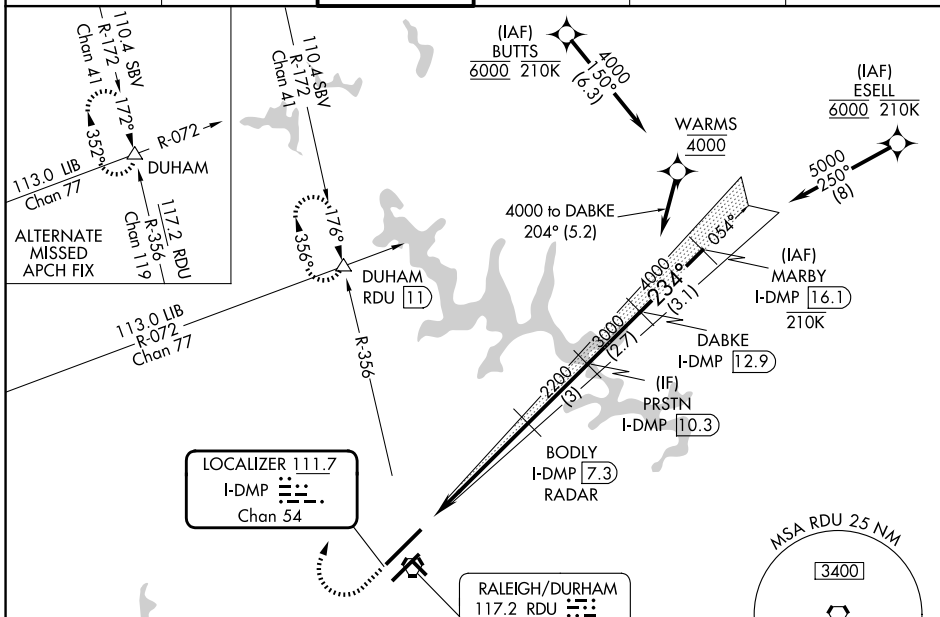
LOC/DME I-DMP 111.7 Chan 54	APP CRS 234°	Rwy Ldg TDZE 10000 409	Apt Elev 435
---	------------------------	--	------------------------

ILS or LOC RWY 23R

RALEIGH-DURHAM INTL (RDU)

RNAV 1-DME/DME/IRU or GPS or RADAR required for procedure entry. RADAR or DME required for LOC only.	ALSF-2 	MISSED APPROACH: Climb to 1000 then climbing right turn to 2200 on RDU VORTAC R-356 to DUHAM INT/RDU 11 DME and hold.
Simultaneous approach authorized. For inop ALS increase S-LOC 23R Cat C/D visibility to 1 1/2 SM.		

D-ATIS 123.8	RALEIGH APP CON 127.675 307.9	RALEIGH TOWER 127.45 257.8	GND CON 121.9 348.6	CLNC DEL 120.1	CPDLC
------------------------	---	--------------------------------------	-------------------------------	--------------------------	-------



1000	2200	RDU R-356	DUHAM	VGSI and ILS glidepath not coincident (VGSI Angle 3.00/TCH 69).	MARBY I-DMP [16.1]
*LOC only.		BODY I-DMP [7.3] RADAR	PRSTN I-DMP [10.3]	DABKE I-DMP [12.9]	
I-DMP [1.8]	*I-DMP [3.4]	2200	3000	4000	5000
1.6 NM	3.9 NM	3 NM	2.7 NM	3.1 NM	
CATEGORY	A	B	C	D	
S-ILS 23R	609/18 200 (200-1/2)				
S-LOC 23R	980/24	571 (600-1/2)	980-1 1/4	571 (600-1 1/4)	
CIRCLING	980-1	545 (600-1)	1020-1 1/2	1180-2 1/2	
			585 (600-1 1/2)	745 (800-2 1/2)	

SE-2, 14 MAY 2026 to 11 JUN 2026

SE-2, 14 MAY 2026 to 11 JUN 2026