

APP CRS <b>234°</b>	Rwy Ldg TDZE Apt Elev	<b>7500</b> <b>435</b> <b>435</b>
------------------------	-----------------------------	---

# RNAV (RNP) Z RWY 23L

RALEIGH-DURHAM INTL (RDU)

RNP AR APCH-GPS.

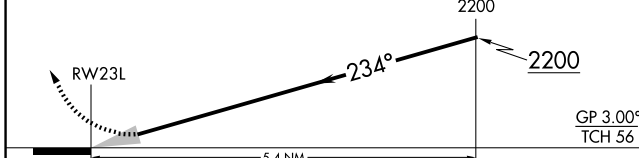
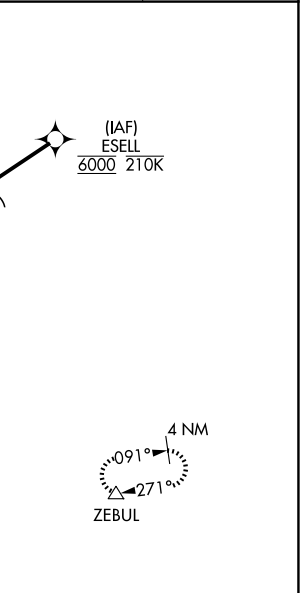
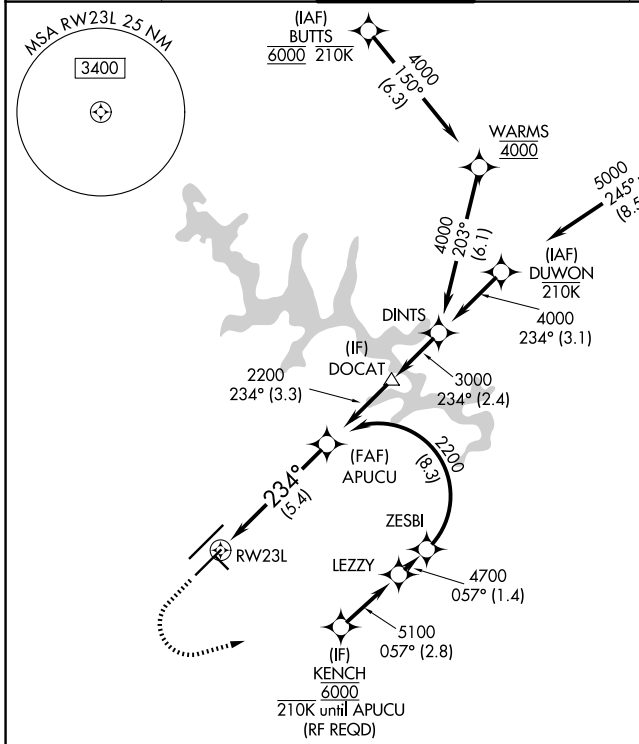
▼ For uncompensated Baro-VNAV systems, procedure NA below -12°C or above 54°C. Simultaneous approach authorized, except for arrivals at KENCH. For inop ALS, increase RNP 0.10 all Cats visibility to RVR 5500.

MALSR

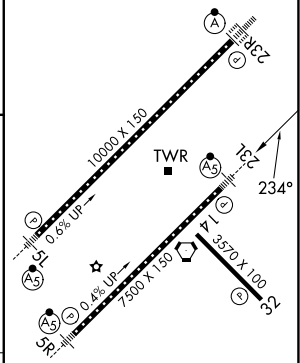


MISSED APPROACH: Climb to 1100 then climbing left turn to 2600 direct ZEBUL and hold.

D-ATIS <b>123.8</b>	RALEIGH APP CON <b>127.675 307.9</b>	RALEIGH TOWER <b>127.45 257.8</b>	GND CON <b>121.9 348.6</b>	CLNC DEL <b>120.1</b>	CPDLC
------------------------	---	--------------------------------------	-------------------------------	--------------------------	-------



ELEV 435	<b>D</b>	TDZE 435
----------	----------	----------



CATEGORY	A	B	C	D
RNP 0.10 DA		776/30	341 (400-%)	
RNP 0.30 DA		826/35	391 (400-%)	

## AUTHORIZATION REQUIRED

REIL Rwy 32  
MIRL Rwy 14-32  
HIRL Rwy 5R-23L and 5L-23R  
TDZ/CL Rwy 5L, 23L, and 23R