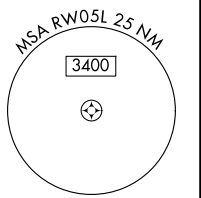
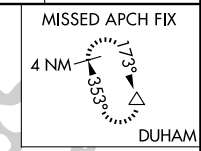
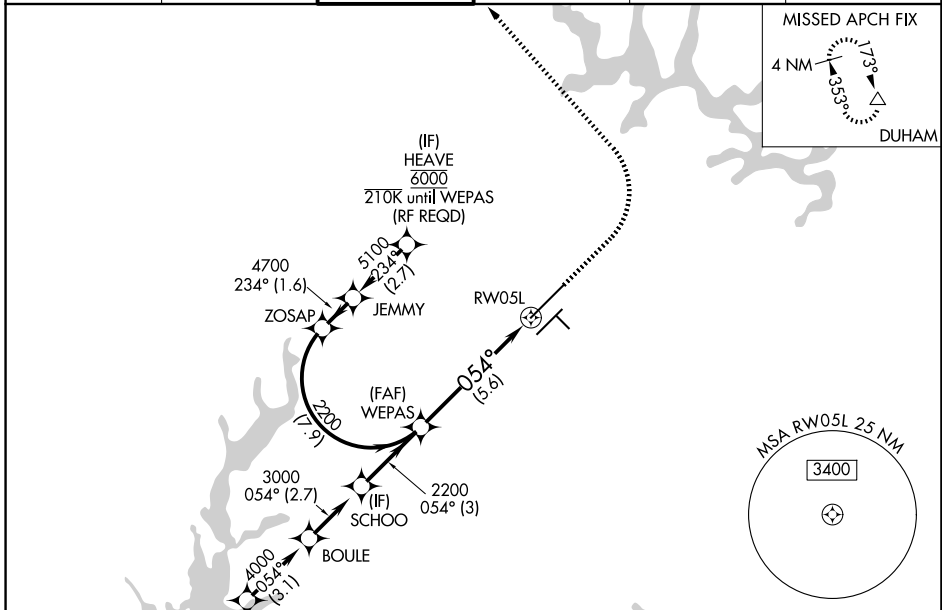


APP CRS	Rwy Ldg	10000
054°	TDZE	384
	Apt Elev	435

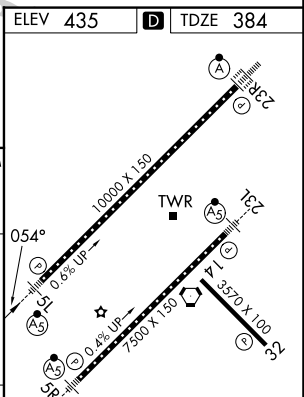
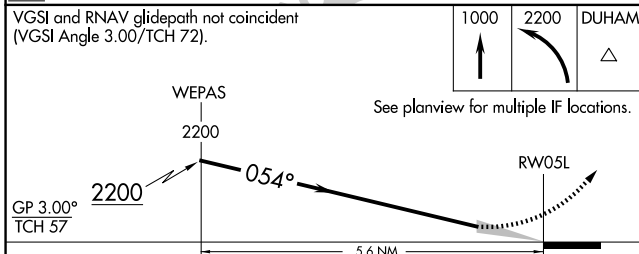
RNAV (RNP) Z RWY 5L

RALEIGH-DURHAM INTL (RDU)

RNP AR APCH-GPS.				MALSR	MISSED APPROACH: Climb to 1000 then climbing left turn to 2200 direct DUHAM and hold.
▼ For uncompensated Baro-VNAV systems, procedure NA below -1°C or above 54°C. Simultaneous approach authorized, except for arrivals at HEAVE. For inop ALS, increase RNP 0.10 all Cats visibility to RVR 4500.					
D-ATIS	RALEIGH APP CON	RALEIGH TOWER	GND CON	CLNC DEL	CPDLC
123.8	127.675 307.9	127.45 257.8	121.9 348.6	120.1	



(IAF) OTTOS
 6000 210K
 VGSi and RNAV glidepath not coincident
 (VGSi Angle 3.00/TCH 72).



CATEGORY	A	B	C	D
RNP 0.10 DA		684/24	300 (300-½)	
RNP 0.30 DA		780/35	396 (400-⅝)	

AUTHORIZATION REQUIRED

REIL Rwy 32
 MIRL Rwy 14-32
 HIRL Rws 5R-23L and 5L-23R
 TDZ/CL Rws 5L, 23L, and 23R

SE-2, 14 MAY 2026 to 11 JUN 2026

SE-2, 14 MAY 2026 to 11 JUN 2026