

APP CRS	Rwy Ldg	<b>7500</b>
<b>054°</b>	TDZE	<b>420</b>
	Apt Elev	<b>435</b>

# RNAV (RNP) Z RWY 5R

RALEIGH-DURHAM INTL (RDU)

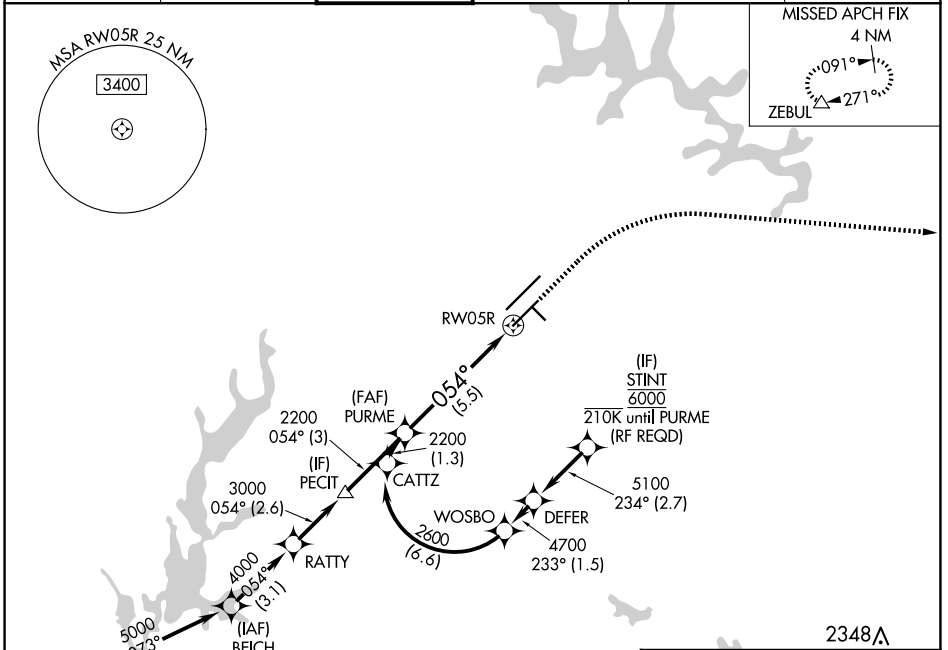
RNP AR APCH-GPS.

▼ For uncompensated Baro-VNAV systems, procedure NA below -12°C or above 54°C. For inop ALS, increase RNP 0.30 all Cats visibility to RVR 4500. Simultaneous approach authorized, except for arrivals at STINT.

MALSR

MISSED APPROACH: Climb to 1000 then climbing right turn to 2600 direct ZEBUL and hold.

D-ATIS	RALEIGH APP CON	RALEIGH TOWER	GND CON	CLNC DEL	CPDLC
<b>123.8</b>	<b>127.675 307.9</b>	<b>127.45 257.8</b>	<b>121.9 348.6</b>	<b>120.1</b>	



SE-2, 14 MAY 2026 to 11 JUN 2026

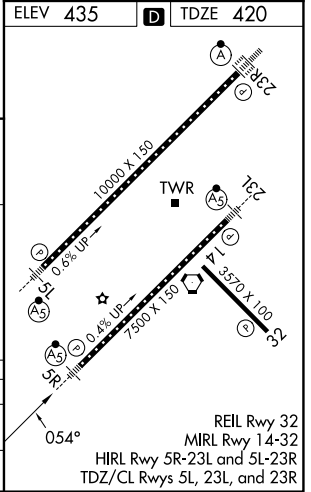
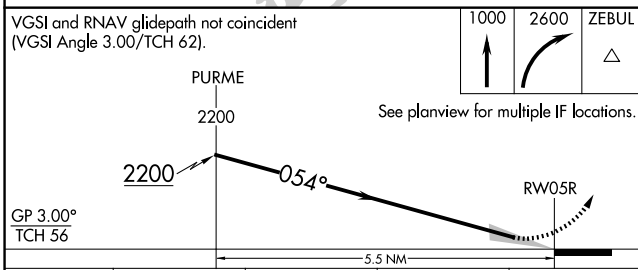
SE-2, 14 MAY 2026 to 11 JUN 2026

VGSI and RNAV glidepath not coincident (VGSI Angle 3.00/TCH 62).

1000 2600 ZEBUL

See planview for multiple IF locations.

GP 3.00° TCH 56



CATEGORY	A	B	C	D
RNP 0.30 DA	721/24 301 (400-½)			
<b>AUTHORIZATION REQUIRED</b>				

REIL Rwy 32  
MIRL Rwy 14-32  
HIRL Rwy 5R-23L and 5L-23R  
TDZ/CL Rwy 5L, 23L, and 23R