

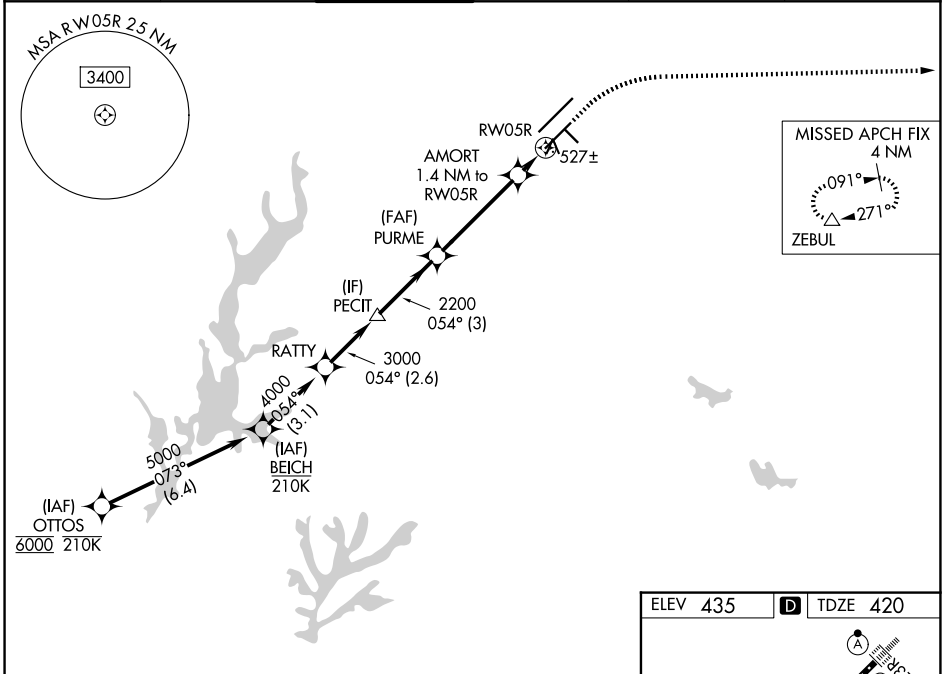
WAAS CH <b>90213</b> <b>W05B</b>	APP CRS <b>054°</b>	Rwy Ldg <b>7500</b> TDZE <b>420</b> Apt Elev <b>435</b>
--	------------------------	---

# RNAV (GPS) Y RWY 5R

RALEIGH-DURHAM INTL (RDU)

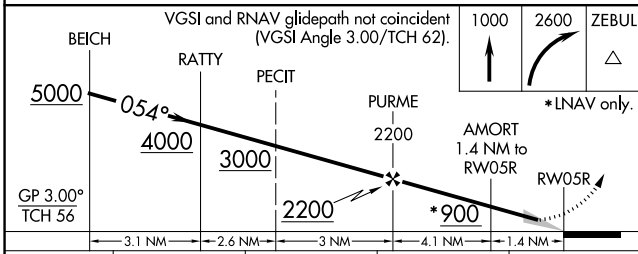
RNP APCH-GPS.	<p>Simultaneous approach authorized. LNAV procedure NA during simultaneous operations. For uncompensated Baro-VNAV systems, LNAV/VNAV NA below -12°C or above 54°C. Use of FD or AP required during simultaneous operations. For inop ALS, increase LNAV/VNAV all Cats visibility to RVR 4500 and LNAV Cats C/D visibility to RVR 5500. # RVR 1800 authorized with use of FD or AP or HUD to DA.</p>	MALSRL	MISSED APPROACH: Climb to 1000 then climbing right turn to 2600 direct ZEBUL and hold.
---------------	--	--------	---

D-ATIS <b>123.8</b>	RALEIGH APP CON <b>127.675 307.9</b>	RALEIGH TOWER <b>127.45 257.8</b>	GND CON <b>121.9 348.6</b>	CLNC DEL <b>120.1</b>	CPDLC
------------------------	---	--------------------------------------	-------------------------------	--------------------------	-------



SE-2, 14 MAY 2026 to 11 JUN 2026

SE-2, 14 MAY 2026 to 11 JUN 2026



GP 3.00° TCH 56	3.1 NM	2.6 NM	3 NM	4.1 NM	1.4 NM
CATEGORY	A	B	C	D	
LPV DA	#620/24		200 (200-½)		
LNAV/VNAV DA	688/24		268 (300-½)		
LNAV MDA	780/24	360 (400-½)	780/40	360 (400-¾)	
CIRCLING	960-1	525 (600-1)	1020-1½ 585 (600-1½)	1180-2½ 745 (800-2½)	

