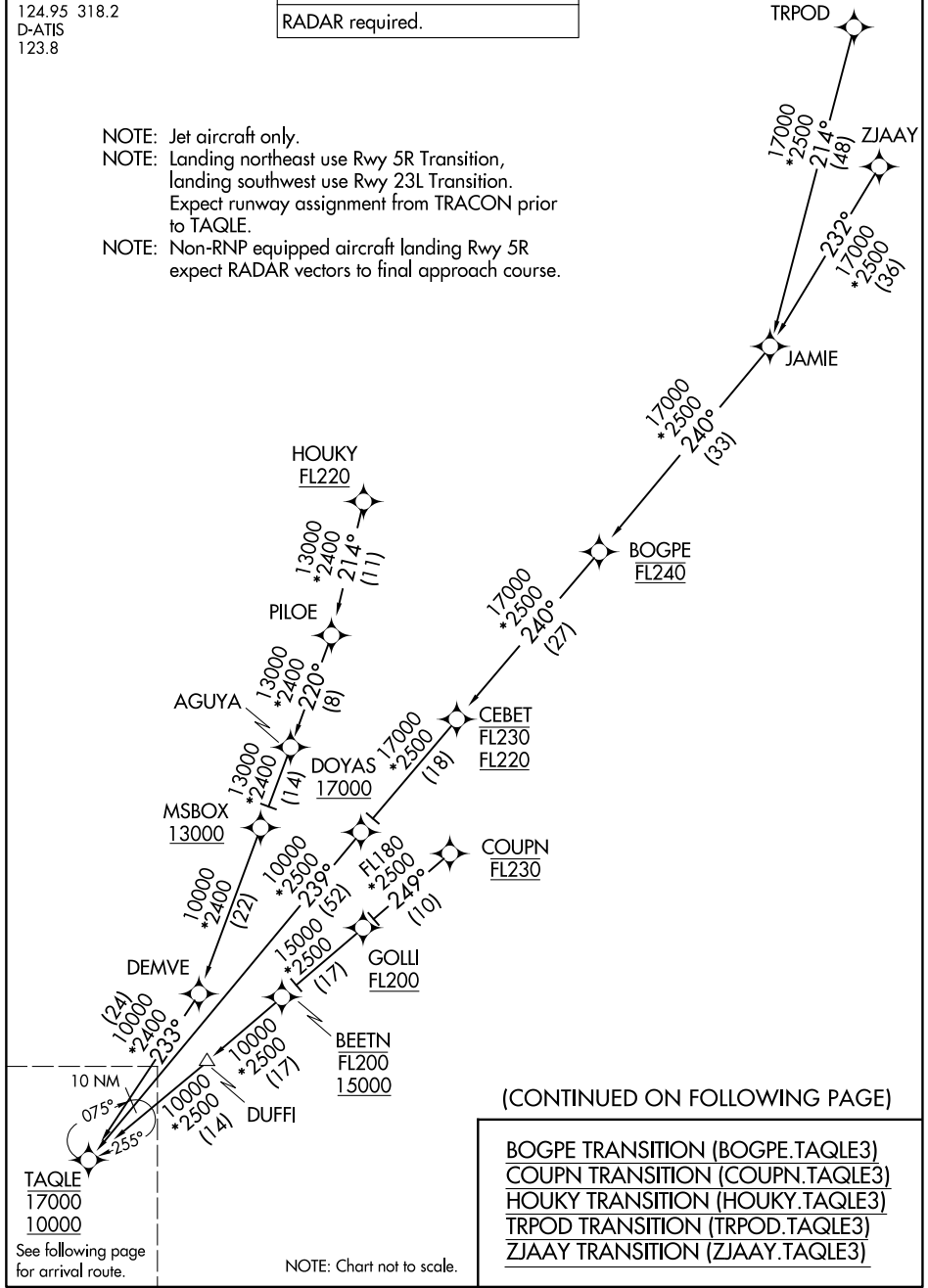


# TAQLE THREE ARRIVAL (RNAV) Transition Routes

RALEIGH APP CON  
124.95 318.2  
D-ATIS  
123.8

RNAV 1 - DME/DME/IRU or GPS.
RADAR required.

- NOTE: Jet aircraft only.  
 NOTE: Landing northeast use Rwy 5R Transition,  
 landing southwest use Rwy 23L Transition.  
 Expect runway assignment from TRACON prior  
 to TAQLE.  
 NOTE: Non-RNP equipped aircraft landing Rwy 5R  
 expect RADAR vectors to final approach course.



SE-2, 14 MAY 2026 to 11 JUN 2026

SE-2, 14 MAY 2026 to 11 JUN 2026

(CONTINUED ON FOLLOWING PAGE)

- BOGPE TRANSITION (BOGPE.TAQLE3)
- COUPN TRANSITION (COUPN.TAQLE3)
- HOUKY TRANSITION (HOUKY.TAQLE3)
- TRPOD TRANSITION (TRPOD.TAQLE3)
- ZJAAY TRANSITION (ZJAAY.TAQLE3)

NOTE: Chart not to scale.

See following page  
for arrival route.

(TAQLE.TAQLE3) 26022

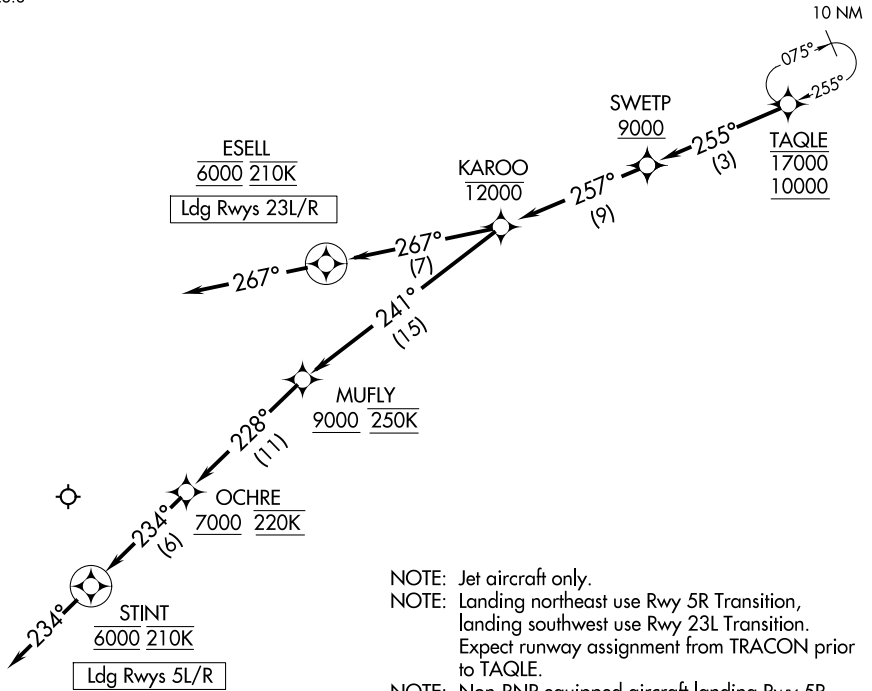
AL-516 (FAA)

RALEIGH-DURHAM INTL (RDU)  
RALEIGH/DURHAM, NORTH CAROLINA

# TAQLE THREE ARRIVAL (RNAV) Arrival Routes

RALEIGH APP CON  
124.95 318.2  
D-ATIS  
123.8

RNAV 1 - DME/DME/IRU or GPS.  
RADAR required.



- NOTE: Jet aircraft only.
- NOTE: Landing northeast use Rwy 5R Transition, landing southwest use Rwy 23L Transition. Expect runway assignment from TRACON prior to TAQLE.
- NOTE: Non-RNP equipped aircraft landing Rwy 5R expect RADAR vectors to final approach course.

NOTE: Chart not to scale.

## ARRIVAL ROUTE DESCRIPTION

From TAQLE on track 255° to cross SWETP at or above 9000, then on track 257° to cross KAROO at or below 12000.

**LANDING RUNWAYS 5L/R:** From KAROO on track 241° to cross MUFLY at or above 9000 and at 250K, then on track 228° to cross OCHRE at or above 7000 and at 220K, then on track 234° to cross STINT at 6000 and at 210K, then on track 234°. Expect RNP RWY 5R approach or RADAR vectors to Rwy 5L/R final approach course.

**LANDING RUNWAYS 23L/R:** From KAROO on track 267° to cross ESELL at 6000 and at 210K, then on track 267°. Expect ILS or RNAV RWY 23L/R approach or RADAR vectors to Rwy 23L/R final approach course.

TAQLE THREE ARRIVAL (RNAV) Arrival Routes  
(TAQLE.TAQLE3) 22JAN26

RALEIGH/DURHAM, NORTH CAROLINA  
RALEIGH-DURHAM INTL (RDU)

SE-2, 14 MAY 2026 to 11 JUN 2026

SE-2, 14 MAY 2026 to 11 JUN 2026