

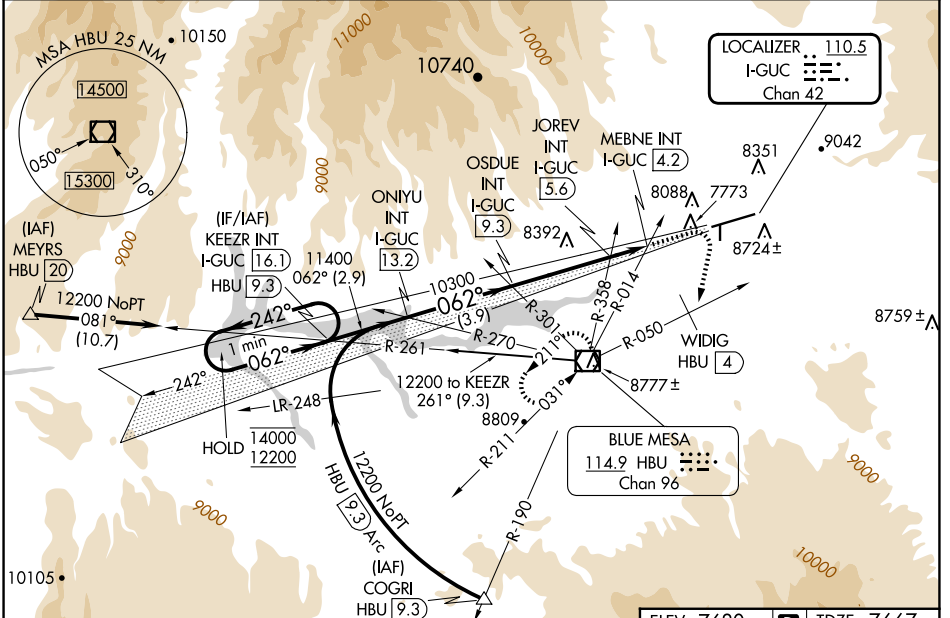
LOC/DME I-GUC 110.5 Chan 42	APP CRS 062°	Rwy Ldg TDZE 9400 7667 Apt Elev 7680
---	------------------------	---

ILS or LOC RWY 6

GUNNISON-CRESTED BUTTE RGNL (GUC)

DME required.	MALSF	MISSED APPROACH: Climb to 10000 then climbing right turn to 12000 on heading 180° and HBU VOR/DME R-050 to WIDIG/HBU 4. DME continue on HBU VOR/DME R-050 to HBU VOR/DME and hold.
<p>▼ Rwy 6 helicopter visibility reduction below 3/4 SM NA. Inop table does not apply. Procedure NA when airport closed except by prior arrangement.</p> <p>⚠ -25°C Circling NA to Rwy's 17 and 35.</p>		

AWOS-3PT 135.075	DENVER CENTER 124.5 350.25	UNICOM 122.7 (CTAF)
----------------------------	--------------------------------------	-------------------------------



One Minute Holding Pattern 14000 ← 242° 12200 062° → GS 3.20° TCH 49	KEEZR INT I-GUC 16.1	10000	12000	HBU R-050	WIDIG HBU 4	HBU R-050	HBU
	ONIYU INT I-GUC 13.2 OSDUE INT I-GUC 9.3 JOREV INT I-GUC 5.6 MEBNE INT I-GUC 4.2	10300	9020	10300	9020	10300	9020
	← 2.9 NM	← 3.9 NM	← 3.7 NM	← 1.4 NM	← 2.4 NM		
CATEGORY	A	B	C	D			
S-ILS 6	8698-3 1031 (1100-3)			NA			
S-LOC 6	9020-3 1353 (1400-3)						
CIRCLING	9260-3	1580 (1600-3)	9540-3 1860 (1900-3)	10040-3 2360 (2400-3)			
JOREV FIX MINIMUMS							
S-LOC 6	8640-3 973 (1000-3)						
CIRCLING	9260-3	1580 (1600-3)	9540-3 1860 (1900-3)	10040-3 2360 (2400-3)			

ELEV 7680	TDZE 7667
HIRL Rwy 6-24 REIL Rwy 24	
FAF to MAP 5.1 NM	
Knots	60 90 120 150 180
Min:Sec	5:06 3:24 2:33 2:02 1:42

SW-1, 14 MAY 2026 to 11 JUN 2026

SW-1, 14 MAY 2026 to 11 JUN 2026