

VOR/DME HBU <b>114.9</b> Chan <b>96</b>	APP CRS <b>031°</b>	Rwy Ldg TDZE Apt Elev <b>7680</b>	<b>N/A</b> <b>N/A</b> <b>7680</b>
---	------------------------	---	---

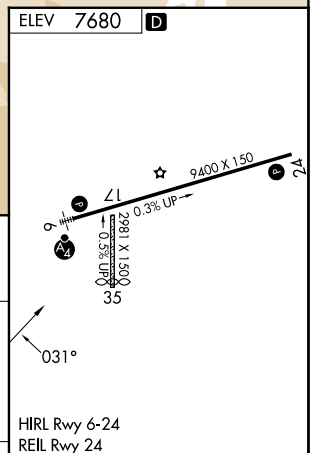
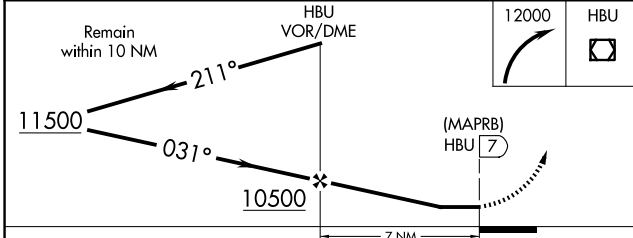
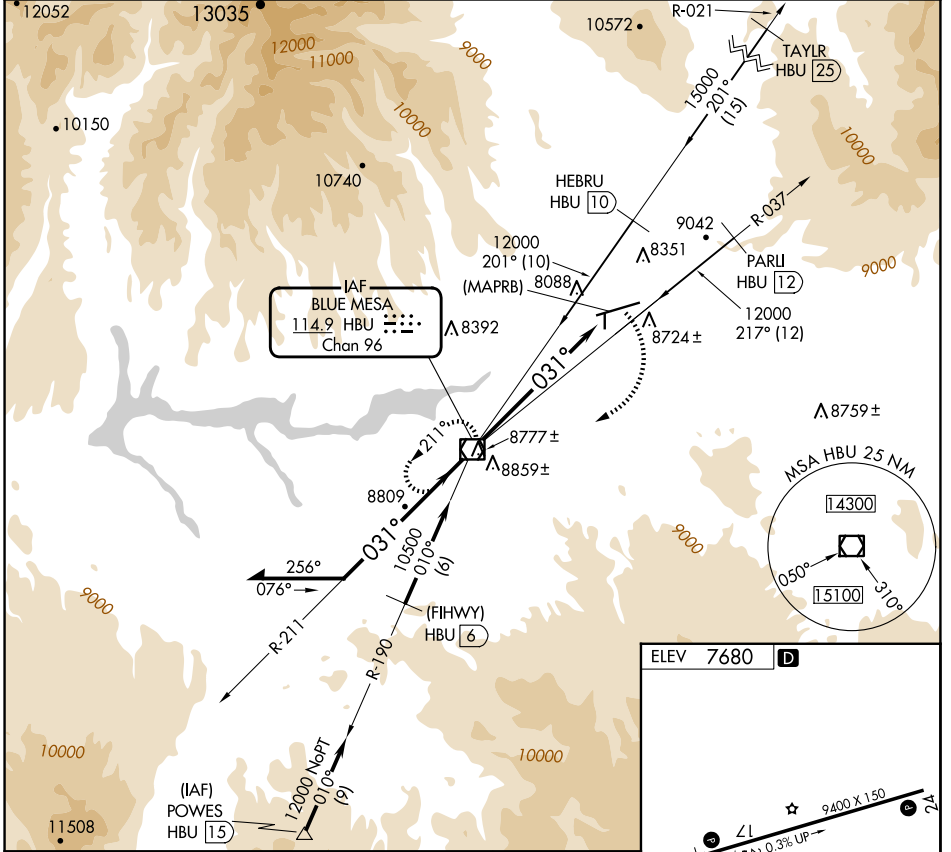
# VOR or GPS-A

GUNNISON-CRESTED BUTTE RGNL (GUC)

**Procedure NA** when airport closed except by prior arrangement.  
 Circling NA to Rws 17 and 35.

**MISSED APPROACH:** Climbing right turn to 12000 direct HBU VOR/DME and hold.

AWOS-3PT <b>135.075</b>	DENVER CENTER <b>124.5 350.25</b>	UNICOM <b>122.7 (CTAF)</b>
----------------------------	--------------------------------------	-------------------------------



CATEGORY	FAF to MAP 7 NM			
	A	B	C	D
CIRCLING	9260-2 1580 (1600-2)	9340-2 1660 (1700-2)	9540-3 1860 (1900-3)	10040-3 2360 (2400-3)
	Knots 60	90	120	150 180
	Min:Sec 7:00	4:40	3:30	2:48 2:20

SW-1, 14 MAY 2026 to 11 JUN 2026

SW-1, 14 MAY 2026 to 11 JUN 2026