

LOC I-CJF 110.15	APP CRS 308°	Rwy Ldg TDZE Apt Elev	7000 590 598
----------------------------	------------------------	-----------------------------	---

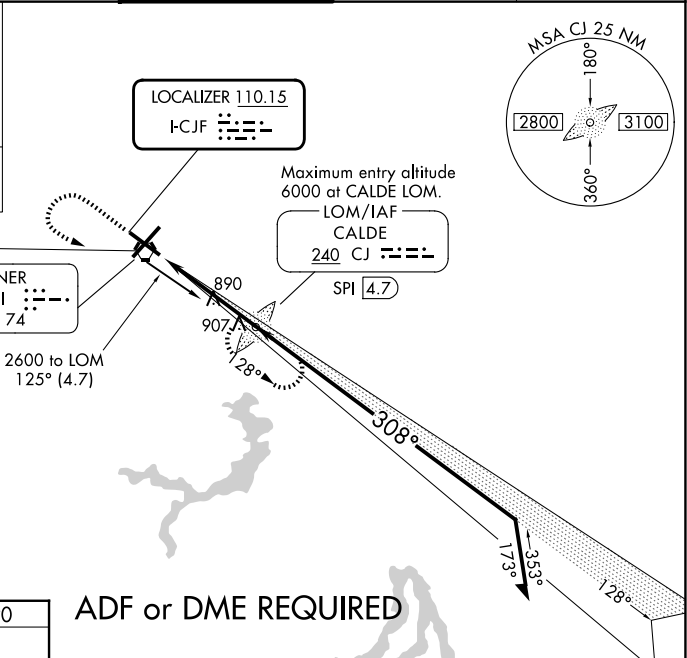
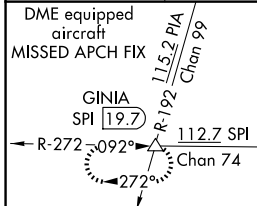
ILS or LOC RWY 31

ABRAHAM LINCOLN CAPITAL (SPI)

ADF or DME required. When local altimeter setting not received, use Logan County altimeter setting: increase DA to 848 feet and all MDA 60 feet, increase Circling Cat C/D/E visibility ¼ SM. For inop MALSR, increase S-ILS-31 Cat C/D/E visibility to ¾ and S-LOC-31 Cat E visibility to 2¼. Autopilot coupled approach NA below 850.

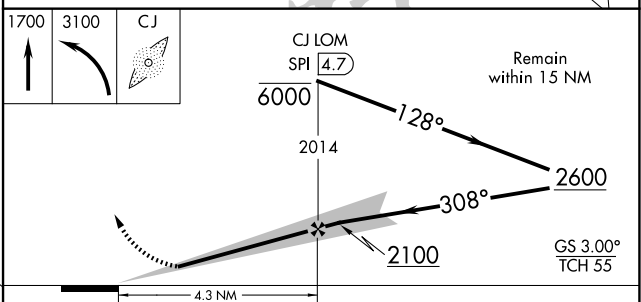
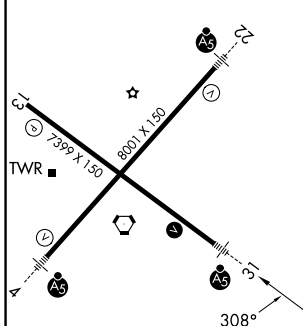
MALSR MISSED APPROACH: Climb to 1700 then climbing left turn to 3100 direct CALDE LOM and hold. (DME equipped aircraft climb to 1700, then climbing left turn to 3200 via SPI R-272 to GINIA INT/SPI 19.7 DME and hold.)

ATIS 127.65 270.1	SAINT LOUIS APP CON 126.15 323.0	SPRINGFIELD TOWER ★ 121.3 (CTAF) 257.8	GND CON 121.9 348.6	UNICOM 122.95
-----------------------------	--	--	-------------------------------	-------------------------



ELEV 598	D	TDZE 590
----------	----------	----------

ADF or DME REQUIRED



CATEGORY	A	B	C	D	E
S-ILS 31	790-½ 200 (200-½)				
S-LOC 31	1200-½ 610 (700-½)	1200-1¼ 610 (700-1¼)	1200-1½ 610 (700-1½)	1200-1¾ 610 (700-1¾)	1200-1¾ 610 (700-1¾)
CIRCLING	1200-1 602 (700-1)	1360-2¼ 762 (800-2¼)	1380-2½ 782 (800-2½)	1380-2¾ 782 (800-2¾)	1380-2¾ 782 (800-2¾)

EC-3, 14 MAY 2026 to 11 JUN 2026

EC-3, 14 MAY 2026 to 11 JUN 2026