

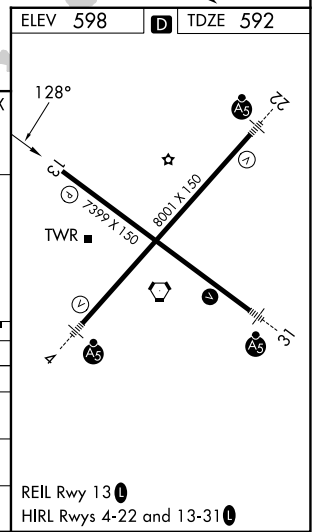
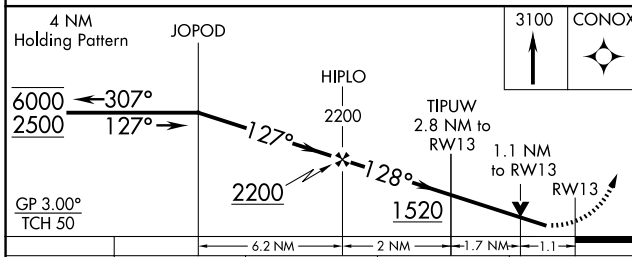
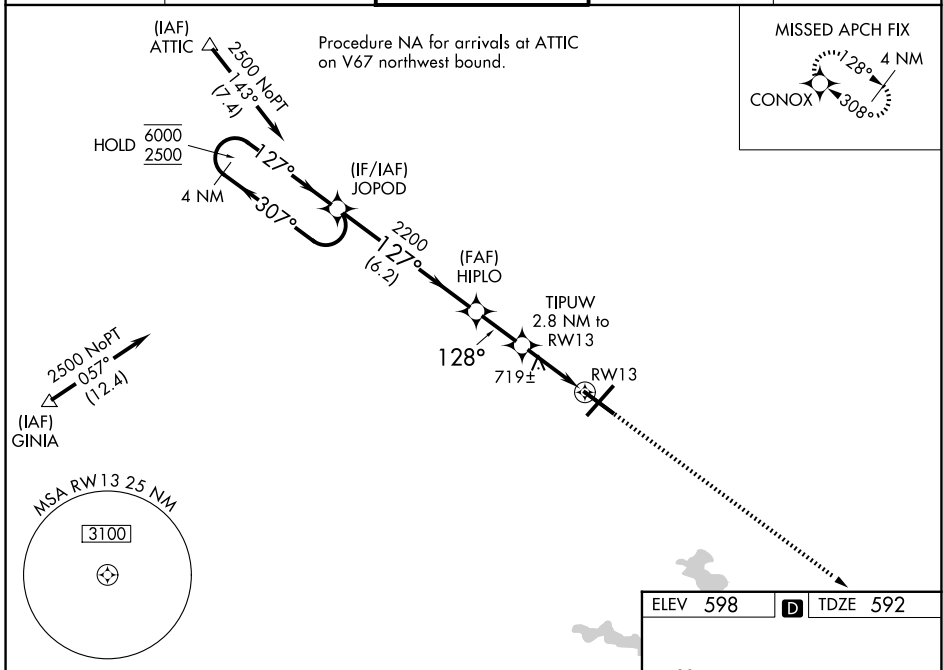
WAAS CH <b>99616</b> <b>W13A</b>	APP CRS <b>128°</b>	Rwy Ldg TDZE Apt Elev	<b>7216</b> <b>592</b> <b>598</b>
--	------------------------	-----------------------------	---

# RNAV (GPS) RWY 13

ABRAHAM LINCOLN CAPITAL (SPI)

RNP APCH - GPS.		MISSED APPROACH: Climb to 3100 direct CONOX and hold.	
<p>Baro-VNAV and VDP NA when using Lincoln altimeter setting. For uncompensated Baro-VNAV systems, LNAV/VNAV NA below -16°C or above 54°C. When local altimeter setting not received, use Lincoln altimeter setting: increase LPV DA to 932 feet and all visibilities 1/8 SM; increase LNAV/VNAV DA to 1068 feet and all visibilities 1/4 SM; increase all MDAs 60 feet and LNAV visibility Cat C/D 1/4 SM, and Circling visibility Cat C/D 1/4 SM. Rwy 13 helicopter visibility reduction below 3/4 SM NA.</p>			

ATIS <b>127.65 270.1</b>	SAINT LOUIS APP CON <b>126.15 323.0</b>	SPRINGFIELD TOWER * <b>121.3 (CTAF) 0 257.8</b>	GND CON <b>121.9 348.6</b>	UNICOM <b>122.95</b>
-----------------------------	--	--	-------------------------------	-------------------------



EC-3, 14 MAY 2026 to 11 JUN 2026

EC-3, 14 MAY 2026 to 11 JUN 2026