

WAAS CH <b>70309</b> <b>W04A</b>	APP CRS <b>043°</b>	Rwy Ldg TDZE Apt Elev	<b>7927</b> <b>592</b> <b>598</b>
--	------------------------	-----------------------------	---

# RNAV (GPS) RWY 4

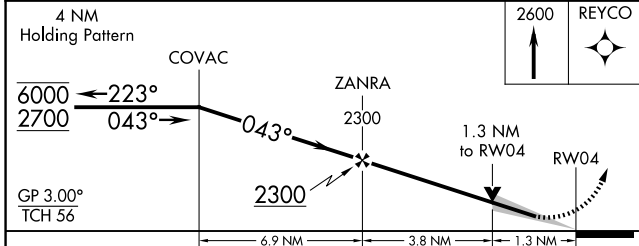
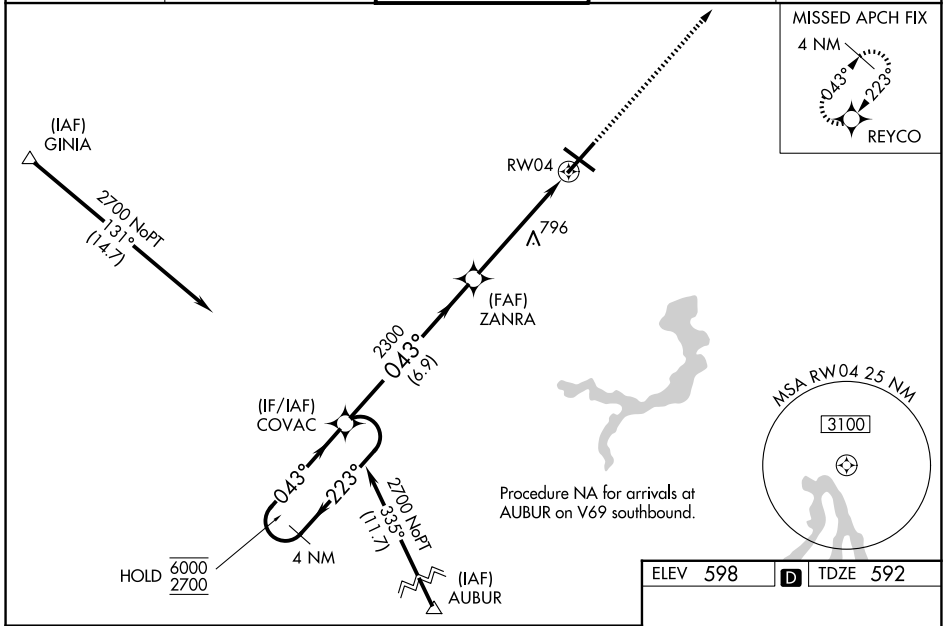
ABRAHAM LINCOLN CAPITAL (SPI)

RNP APCH - GPS.

**ASR** For uncompensated Baro-VNAV systems, LNAV/VNAV NA below -16°C or above 54°C. Baro-VNAV and VDP NA when using AAA altimeter setting. For inop ALS, increase LPV all Cats visibility to RVR 4500 and LNAV Cats C and D visibility to 1 3/8 SM. When local altimeter setting not received, use AAA altimeter setting and increase LPV DA to 912 feet; increase LNAV/VNAV DA to 989 feet and all visibilities to RVR 3500; increase all MDAs 60 feet and LNAV visibility Cats C and D to RVR 5500 and Circling visibility Cats C and D 1/4 SM. For inop ALS when using AAA altimeter setting, increase LPV all Cats visibility to RVR 4500.

**MALSR** MISSED APPROACH: Climb to 2600 direct REYCO and hold.

ATIS <b>127.65 270.1</b>	SAINT LOUIS APP CON <b>126.15 323.0</b>	SPRINGFIELD TOWER ★ <b>121.3 (CTAF) 257.8</b>	GND CON <b>121.9 348.6</b>	UNICOM <b>122.95</b>
-----------------------------	--	--	-------------------------------	-------------------------



ELEV 598	<b>D</b> TDZE 592
----------	-------------------

Detailed diagram of the RWY 4 approach. It shows the final 1.3 NM from RWY 4, the runway itself, and the missed approach procedure. The missed approach starts 4 NM from RWY 4, climbs to 2600 feet, and then descends to RWY 4. The diagram also shows the TWR (Tower) and the REIL (Runway End Identifier Lights) for RWY 13.

CATEGORY	A	B	C	D
LPV DA		854/24	262 (300-1/2)	
LNAV/VNAV DA		931/26	339 (400-1/2)	
LNAV MDA	1060/24	468 (500-1/2)	1060/50	468 (500-1)
CIRCLING	1060-1 462 (500-1)	1100-1 502 (600-1)	1360-2 1/4 762 (800-2 1/4)	1380-2 1/2 782 (800-2 1/2)

EC-3, 14 MAY 2026 to 11 JUN 2026

EC-3, 14 MAY 2026 to 11 JUN 2026