

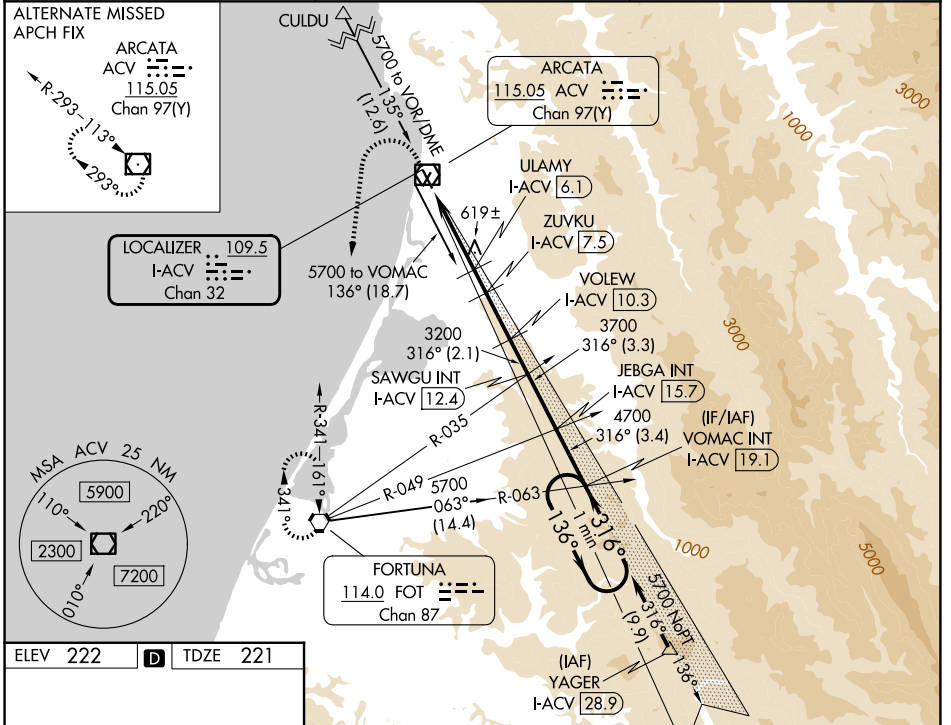
LOC/DME I-ACV <b>109.5</b> Chan <b>32</b>	APP CRS <b>316°</b>	Rwy Ldg TDZE 5846 221 Apt Elev 222
---	------------------------	--

# ILS or LOC RWY 32

CALIFORNIA REDWOOD COAST-HUMBOLDT COUNTY (ACV)

<p><b>NA</b> Circling NA northeast of Rwy 14-32. DME required.</p>	<p><b>MALSR</b></p>	<p>MISSED APPROACH: Climb to 800 then climbing left turn to 3000 direct FOT VORTAC and hold.</p>
--	---------------------	--

<p>ASOS <b>118.525</b></p>	<p>SEATTLE CENTER <b>124.85 306.3</b></p>	<p>UNICOM <b>123.0 (CTAF)</b></p>
--------------------------------	---	---------------------------------------



ELEV 222 **D** TDZE 221

CL Rwy 14 **1**  
 TDZ/CL Rwy 32 **1**  
 MIRL Rwy 1-19 **1**  
 HIRL Rwy 14-32 **1**  
 REIL Rwy 14 **1**  
 REIL Rwy 1

800 3000 FOT

Use I-ACV DME when on the localizer course. VGSI and ILS glidepath not coincident (VGSI Angle 3.00/TCH 43).

VOMAC I-ACV 19.1 One Minute Holding Pattern

\*LOC only

ULMY I-ACV 6.1 ZUVKU I-ACV 7.5 VOLEW I-ACV 10.3 SAWGU I-ACV 12.4 JEBGA I-ACV 15.7

I-ACV 1.1 I-ACV 3 I-ACV 6.1 I-ACV 7.5 I-ACV 10.3 I-ACV 12.4 I-ACV 15.7

1860\* 2320\* 3200 3700 4700

136° 316° 5700

GS 3.00° TCH 47

CATEGORY	A	B	C	D
S-ILS 32	441/18 220 (300-1/2)			
S-LOC 32	880/24	659 (700-1/2)	880-1 3/8	659 (700-1 3/8)
CIRCLING	880-1	658 (700-1)	880-1 7/8	880-2 658 (700-1 7/8)

SW-2, 14 MAY 2026 to 11 JUN 2026

SW-2, 14 MAY 2026 to 11 JUN 2026