

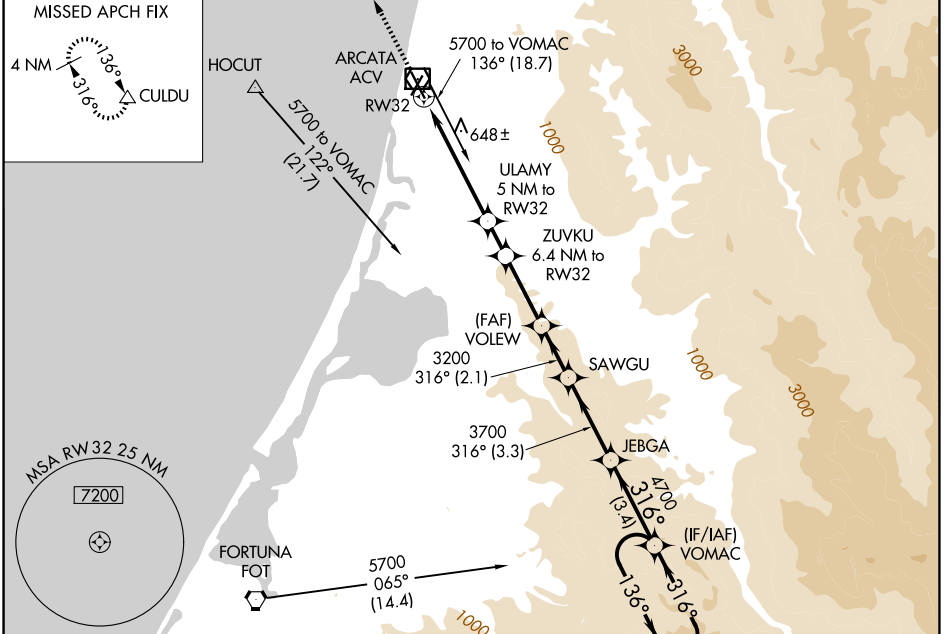
WAAS CH 63108 W32A	APP CRS 316°	Rwy Ldg TDZE 221 Apt Elev 222	5846
--	------------------------	---	-------------

RNAV (GPS) RWY 32

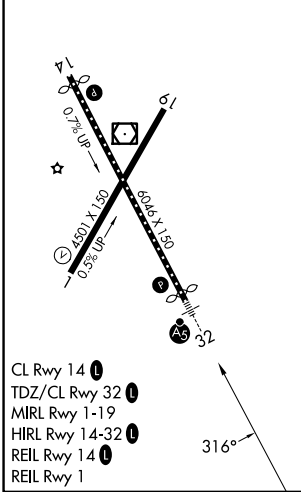
CALIFORNIA REDWOOD COAST-HUMBOLDT COUNTY (ACV)

▽ Baro-VNAV NA. Circling NA northeast of Rwy 14-32. ▲ DME/DME RNP-0.3 NA.	MALSR 	MISSED APPROACH: Climb to 3000 direct CULDU and hold.
--	------------------	---

ASOS 118.525	SEATTLE CENTER 124.85 306.3	UNICOM 123.0 (CTAF)
------------------------	---------------------------------------	-------------------------------



ELEV 222	D	TDZE 221
----------	----------	----------



3000 CULDU	VGSi and RNAV glidepath not coincident (VGSi Angle 3.00/TCH 43).				JEBGA	VOMAC	5 NM Holding Pattern
*LNAV only.	ULAMY 6.4 NM to RW32	ZUVKU 6.4 NM to RW32	VOLEW 3200	SAWGU 3700	316°	4700	136°
2 NM to RW32	1860	2300*	3200	3700	316°	4700	5700
	2 NM	3 NM	1.4 NM	2.8 NM	2.1 NM	3.3 NM	3.4 NM
GP 3.00° TCH 47							
CATEGORY	A	B	C	D			
LPV DA	441/18		220 (300-½)				
LNAV/VNAV DA	1056-2½		835 (900-2½)				
LNAV MDA	900/24 679 (700-½)	900/40 679 (700-¾)	900-1½		679 (700-1½)		
CIRCLING	900-1		678 (700-1)		900-2 678 (700-2)		900-2¼ 678 (700-2¼)

SW-2, 14 MAY 2026 to 11 JUN 2026

SW-2, 14 MAY 2026 to 11 JUN 2026