

WAAS CH 72616 W34A	APP CRS 345°	Rwy Ldg TDZE Apt Elev	5070 14 15
--	------------------------	-----------------------------	---------------------------------------

RNAV (GPS) RWY 34

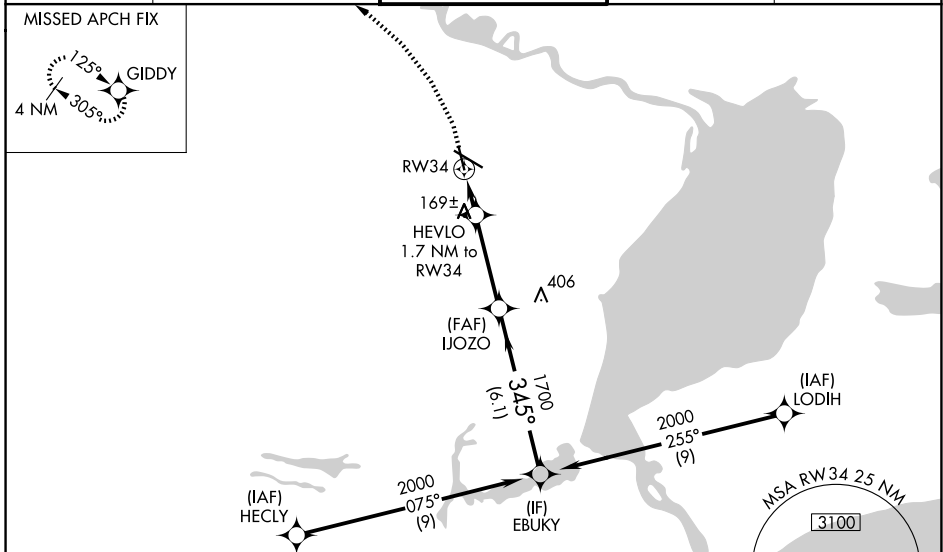
JACK BROOKS RGNL (BPT)

RNP APCH - GPS.

⚠ Baro-VNAV NA when using Orange County altimeter setting. For uncompensated Baro-VNAV systems, LNAV/VNAV NA below -4°C or above 54°C. When local altimeter setting not received, use Orange County altimeter setting: increase LPV DA to 346 feet; increase LNAV/VNAV DA to 347 feet and all visibilities $\frac{1}{8}$ SM; increase all MDAs 40 feet.

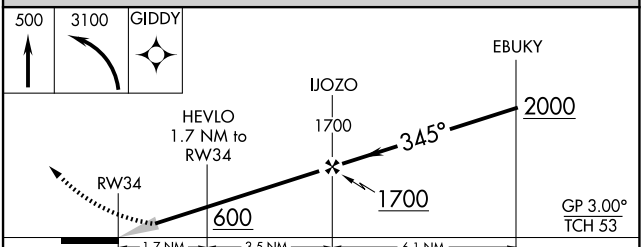
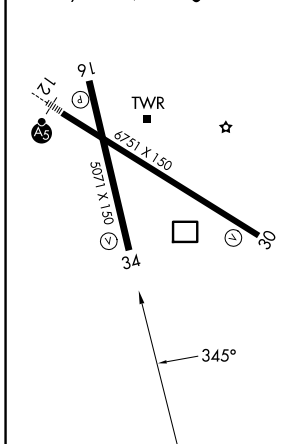
MISSED APPROACH: Climb to 500 then climbing left turn to 3100 direct GIDDY and hold, continue climb-in-hold to 3100.

ATIS 126.3	HOUSTON APP CON 121.3 377.1	BEAUMONT TOWER * 119.5 (CTAF) 0	GND CON 124.85	UNICOM 122.95
----------------------	---------------------------------------	---	--------------------------	-------------------------



ELEV 15	D	TDZE 14
---------	----------	---------

REIL Rws 16, 30 and 34 **0**
HIRL Rws 12-30, 16-34 **0**



CATEGORY	A	B	C	D	E
LPV DA		214- $\frac{3}{4}$	200 (200- $\frac{3}{4}$)		
LNAV/VNAV DA		315- $\frac{7}{8}$	301 (300- $\frac{7}{8}$)		
LNAV MDA	480-1	466 (500-1)	480- $\frac{1}{8}$		466 (500- $\frac{1}{8}$)

SC-5, 14 MAY 2026 to 11 JUN 2026

SC-5, 14 MAY 2026 to 11 JUN 2026