


LOC/DME I-MPV <b>108.7</b> Chan 24	APP CRS <b>168°</b>	Rwy Ldg TDZE <b>5000</b> <b>1135</b>	Apt Elev <b>1166</b>
--	------------------------	--	-------------------------

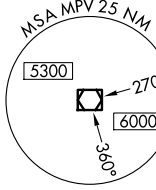
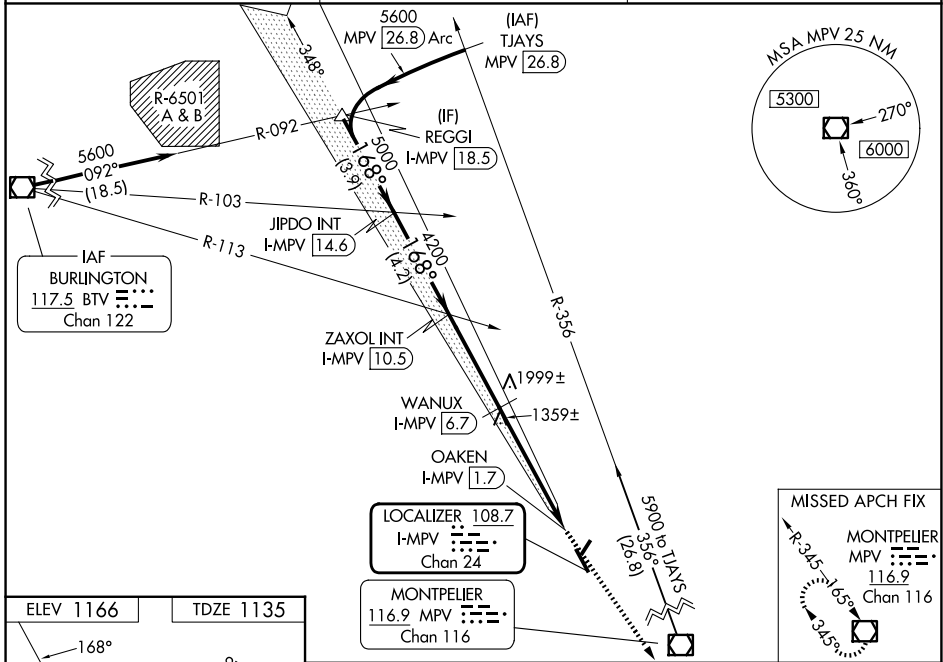
# ILS or LOC RWY 17

EDWARD F KNAPP STATE (MPV)

**⚠** Inoperative table does not apply to S-LOC 17 Cats A and B. When local altimeter setting not received, procedure NA. Rwy 17 helicopter visibility reduction below 3/4 SM  
**⚠** NA. Circling Rwy 5, 35 NA at night. For inoperative MALSRL, increase S-ILS 17 all Cats visibility to 1 1/8 mile and WANUX fix minimums S-LOC 17 Cats A/B visibility to 1 mile and Cats C/D visibility to 1 1/8 mile.

**MALSRL**  
  
**MISSED APPROACH:** Climb to 5200 direct MPV VOR/DME and hold, continue climb-hold to 5200.

ASOS <b>132.675</b>	BOSTON CENTER <b>135.7 282.2</b>	UNICOM <b>122.8 (CTAF)</b>
------------------------	-------------------------------------	-------------------------------

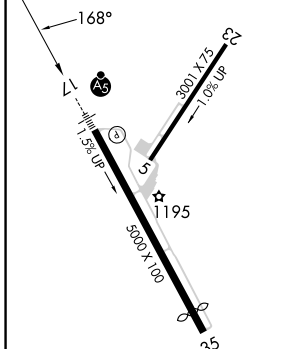


**LOCALIZER 108.7**  
 I-MPV [18.5]  
 Chan 24

**MONTELLIER**  
 116.9 MPV [26.9]  
 Chan 116

**MISSED APCH FIX**  
**MONTELLIER**  
 MPV [26.9]  
 116.9  
 Chan 116

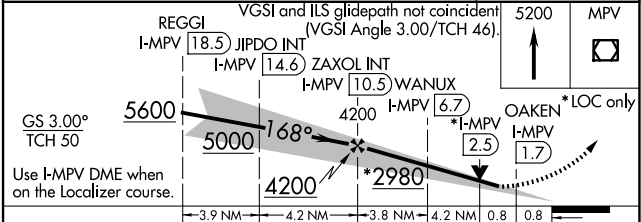
ELEV 1166	TDZE 1135
-----------	-----------



REIL Rwy 35  
 MIRL Rwy 5-23  
 MIRL Rwy 17-35

FAF to MAP 8.8 NM

Knots	60	90	120	150	180
Min:Sec	8:48	5:52	4:24	3:31	2:56



CATEGORY	A	B	C	D
S-ILS 17	1486-3/4 351 (400-3/4)			
S-LOC 17	2980-1 1/4 1845 (1900-1 1/4)	2980-1 1/2 1845 (1900-1 1/2)	2980-3	1845 (1900-3)
CIRCLING	2980-1 1/4 1814 (1900-1 1/4)	2980-1 1/2 1814 (1900-1 1/2)	2980-3	1814 (1900-3)
WANUX FIX MINIMUMS				
S-LOC 17	1660-3/4	525 (500-3/4)	1660-1 1/4	525 (500-1 1/4)
CIRCLING	1980-1 1/4	814 (900-1 1/4)	2700-3 1534 (1600-3)	2920-3 1754 (1800-3)

NE-1, 14 MAY 2026 to 11 JUN 2026

NE-1, 14 MAY 2026 to 11 JUN 2026