

APP CRS	Rwy Ldg	4498
348°	TDZE	1158
	Apt Elev	1166

RNAV (GPS) RWY 35

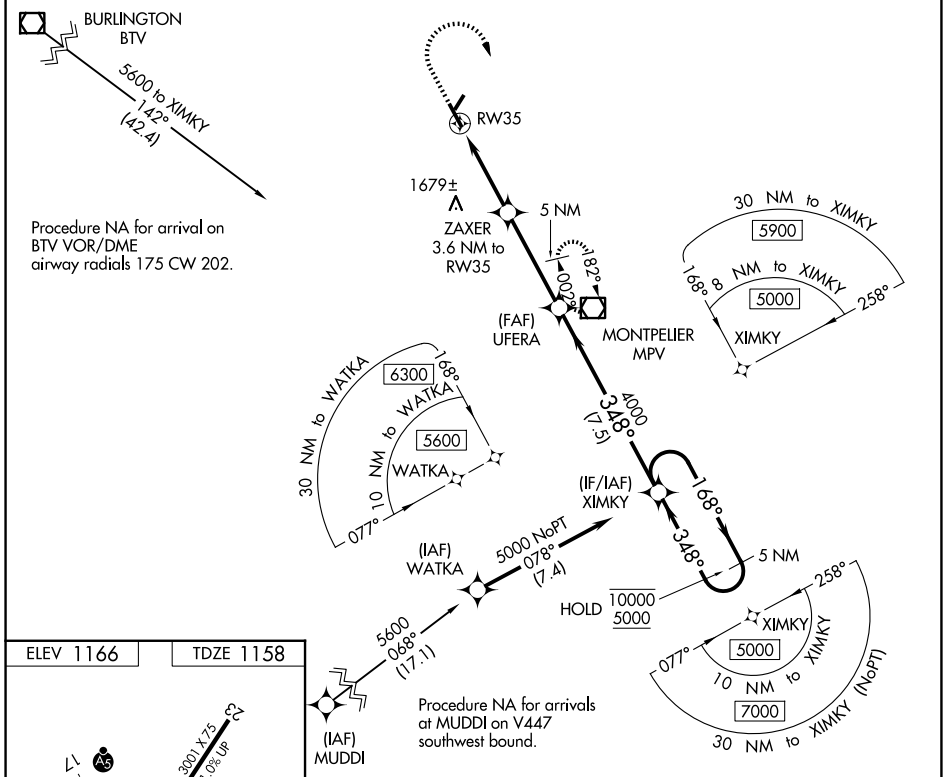
EDWARD F KNAPP STATE (MPV)

RNP APCH:

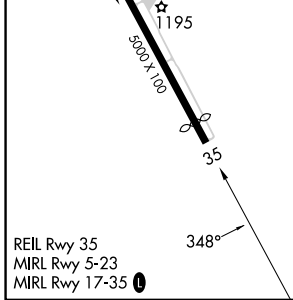
▼ Rwy 35 helicopter visibility reduction below 1 SM NA.
▲ NA When local altimeter setting not received, procedure NA.
☉ -19°C Straight-in Rwy 35 NA at night, Circling Rwy 5, 35 NA at night.

MISSED APPROACH: (Do not exceed 225K)
 Climb to 2400 then climbing right turn to 5100 direct MPV VOR/DME and hold, continue climb-in-hold to 5100.

ASOS 132.675	BOSTON CENTER 135.7 282.2	UNICOM 122.8 (CTAF) 0
------------------------	-------------------------------------	---------------------------------



ELEV 1166	TDZE 1158
-----------	-----------



EDWARD F KNAPP STATE (MPV)

RNAV (GPS) RWY 35

2400	5100	MPV	5 NM Holding Pattern	
RW35		ZAXER 3.6 NM to RW35	XIMKY	
2560		UFERA	10000 / 5000	
3.6 NM		3.9 NM	7.5 NM	
CATEGORY	A	B	C	D
LNAV MDA	1940-1 782 (800-1)	1940-1¼ 782 (800-1¼)	1940-2½ 782 (800-2½)	782 (800-2½)
CIRCLING	1980-1¼	814 (900-1¼)	2700-3 1534 (1600-3)	2900-3 1734 (1800-3)

NE-1, 14 MAY 2026 to 11 JUN 2026