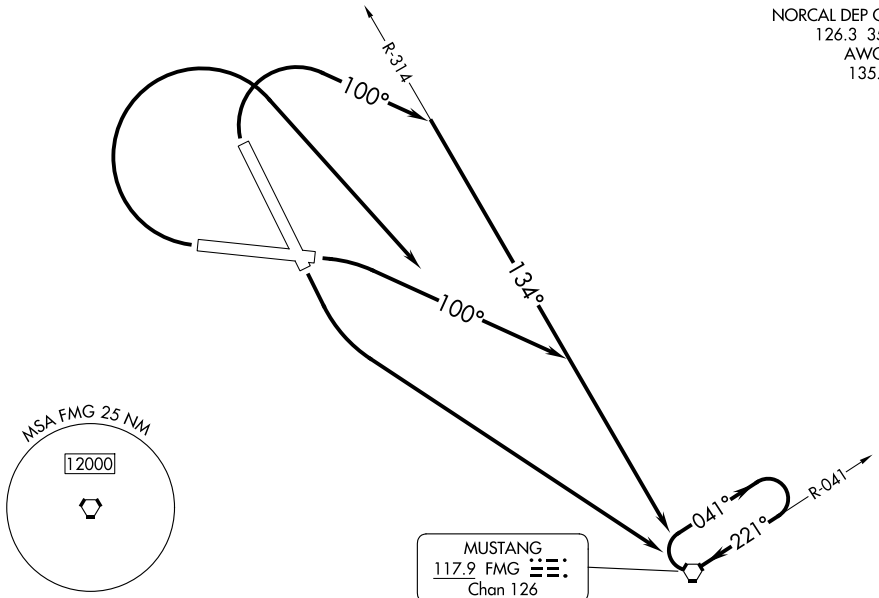


NORCAL DEP CON  
126.3 353.9  
AWOS-3  
135.175



TAKEOFF MINIMUMS

- Rwy 8: Standard with minimum climb of 390'/NM to 6800 or 4400-3 for VCOA.
- Rwy 14: Standard with minimum climb of 360'/NM to 6400 or 4400-3 for VCOA.
- Rwy 26: Standard with minimum climb of 570'/NM to 8900 or 4400-3 for VCOA.
- Rwy 32: Standard with minimum climb of 520'/NM to 8100 or 4400-3 for VCOA.

TAKEOFF OBSTACLE NOTES

- Rwy 8: Vegetation beginning 138' from DER, 358' left of centerline, up to 5058' MSL.
- Rwy 26: Vegetation 4' from DER, 360' right of centerline, 4997' MSL.  
Pole 1079' from DER, 623' left of centerline, 5032' MSL.  
Terrain beginning 2.4 NM from DER, 733' left of centerline, up to 5756' MSL.
- Rwy 32: Vertical structure 56' from DER, 229' left of centerline, 5054' MSL.  
Vegetation 2.3 NM from DER, 2232' left of centerline, 5806' MSL.

NOTE: Chart not to scale.

DEPARTURE ROUTE DESCRIPTION

TAKEOFF RUNWAY 8: Climbing right turn to heading 100° to intercept FMG R-314 to FMG VORTAC, thence. . . .

TAKEOFF RUNWAY 14: Climbing left turn direct FMG VORTAC, thence. . . .

TAKEOFF RUNWAY 26: Climbing right turn direct FMG VORTAC, thence. . . .

TAKEOFF RUNWAY 32: Climbing right turn to heading 100° to intercept FMG VORTAC R-314 to FMG VORTAC, thence. . . .

. . . .continue climb in FMG VORTAC holding pattern to cross FMG VORTAC at or above MEA for route of flight.

VCOA RUNWAYS 8,14, 26, 32: Obtain ATC approval for VCOA when requesting IFR clearance. Climb in visual conditions to cross Reno/Stead airport at or above 9300 before proceeding on course.

SW-4, 14 MAY 2026 to 11 JUN 2026

SW-4, 14 MAY 2026 to 11 JUN 2026