

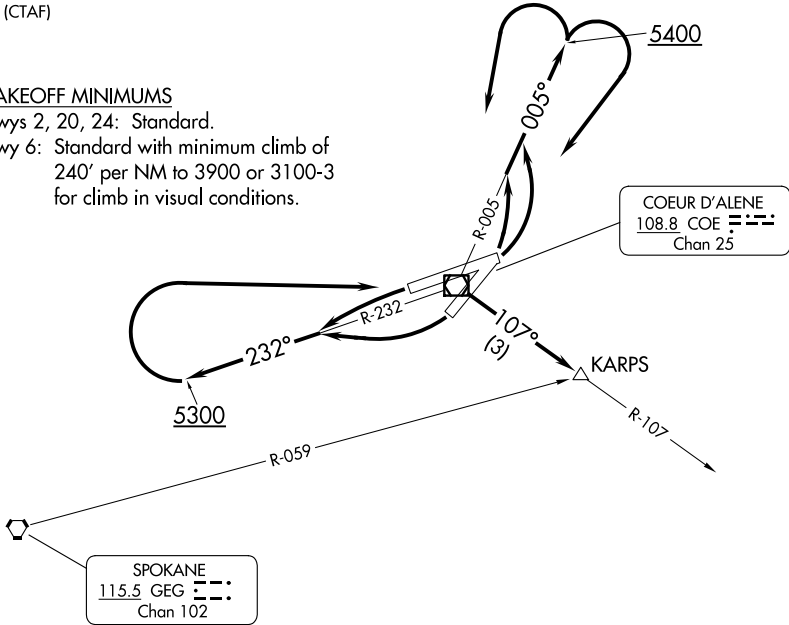
COEUR D'ALENE TWO DEPARTURE (OBSTACLE) AL-527 (FAA) COEUR D'ALENE, IDAHO

SPOKANE DEP CON
132.1 263.0
AWOS-3PT
135.075
UNICOM
122.8 (CTAF)

TAKEOFF MINIMUMS

Rwys 2, 20, 24: Standard.

Rwy 6: Standard with minimum climb of 240' per NM to 3900 or 3100-3 for climb in visual conditions.



TAKEOFF OBSTACLE NOTES

Rwy 20: Trees beginning 165' from DER, 276' right of centerline, up to 109' AGL/2399' MSL. Tree 2914' from DER, 425' left of centerline, 38' AGL/2383' MSL.

Rwy 6: Poles beginning 895' from DER, 690' right of centerline, up to 44' AGL/2354' MSL. Trees beginning 1149' from DER, 720' right of centerline, up to 103' AGL/2563' MSL.

NOTE: Chart not to scale.

DEPARTURE ROUTE DESCRIPTION

TAKEOFF RUNWAY 2: Climbing left turn to 5400 on COE R-005, then left or right turn direct COE VOR/DME, then on COE R-107 to KARPS INT to MEA for route of flight.

TAKEOFF RUNWAY 6: Climbing left turn to 5400 on COE R-005, then left or right turn direct COE VOR/DME, then on COE R-107 to KARPS INT to MEA for route of flight or climb in visual conditions to cross Coeur D'Alene at or above 5300 before proceeding on course. When executing VCOA, notify ATC prior to departure.

TAKEOFF RUNWAY 20: Climbing right turn, thence

TAKEOFF RUNWAY 24: Climbing left turn, thence

. . . . climb on COE R-232 to 5300, then right direct COE VOR/DME, then on COE R-107 to KARPS INT to MEA for route of flight.