

RNAV (GPS) RWY 6

COEUR D'ALENE (COE)

WAAS CH 70608 W06A	APP CRS 051°	Rwy Ldg 7400 TDZE 2291 Apt Elev 2320
--	------------------------	---

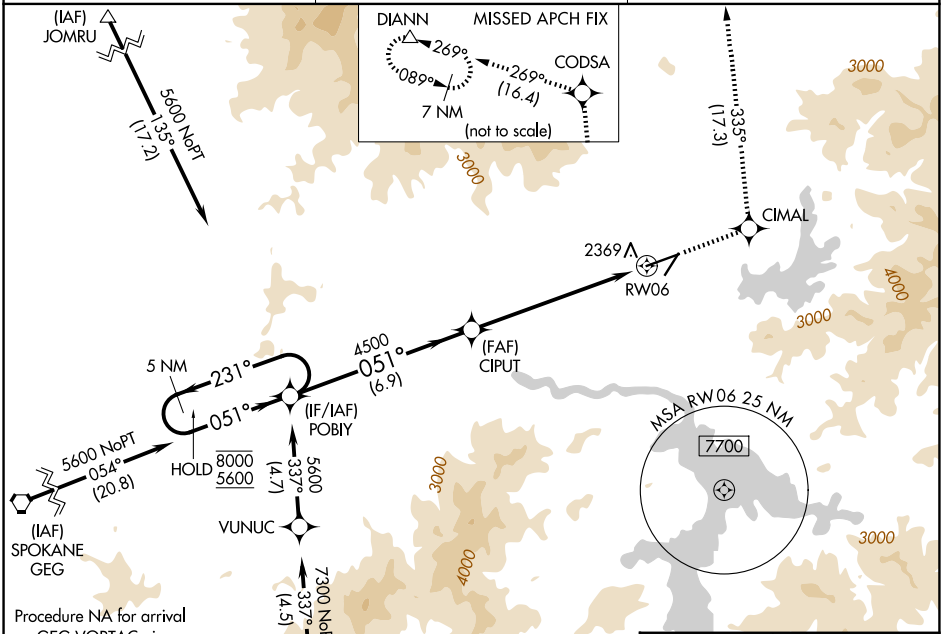
RNP APCH - GPS.

⚠ Circling Rwy 2 NA at night. For uncompensated Baro-VNAV systems, LNAV/VNAV NA below -21°C or above 53°C. Circling NA for Cat D southeast of Rwy 6-24.

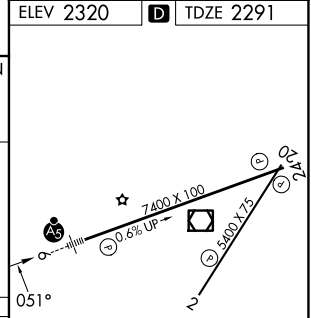
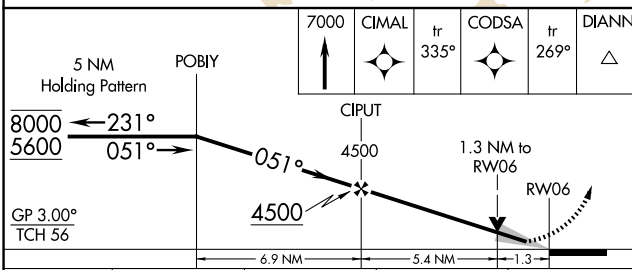
MALSR

MISSED APPROACH: Climb to 7000 direct CIMAL and on track 335° to CODSA and on track 269° to DIANN and hold.

AWOS-3PT 135.075	SPOKANE APP CON 132.1 263.0	UNICOM 122.8 (CTAF)
----------------------------	---------------------------------------	-------------------------------



ELEV 2320	D	TDZE 2291
-----------	----------	-----------



CATEGORY	A	B	C	D
LPV DA		2491-1/2	200 (200-1/2)	
LNAV/VNAV DA		2654-3/4	363 (400-3/4)	
LNAV MDA	2740-1/2	449 (500-1/2)	2740-1	449 (500-1)
CIRCLING	2740-1 420 (500-1)	2880-1 560 (600-1)	3020-2 700 (700-2)	3180-2 3/4 860 (900-2 3/4)

MIRL Rwy 2-20 **Ⓛ**
HIRL Rwy 6-24 **Ⓛ**
REIL Rws 2 and 24 **Ⓛ**

NW-1, 14 MAY 2026 to 11 JUN 2026

NW-1, 14 MAY 2026 to 11 JUN 2026