

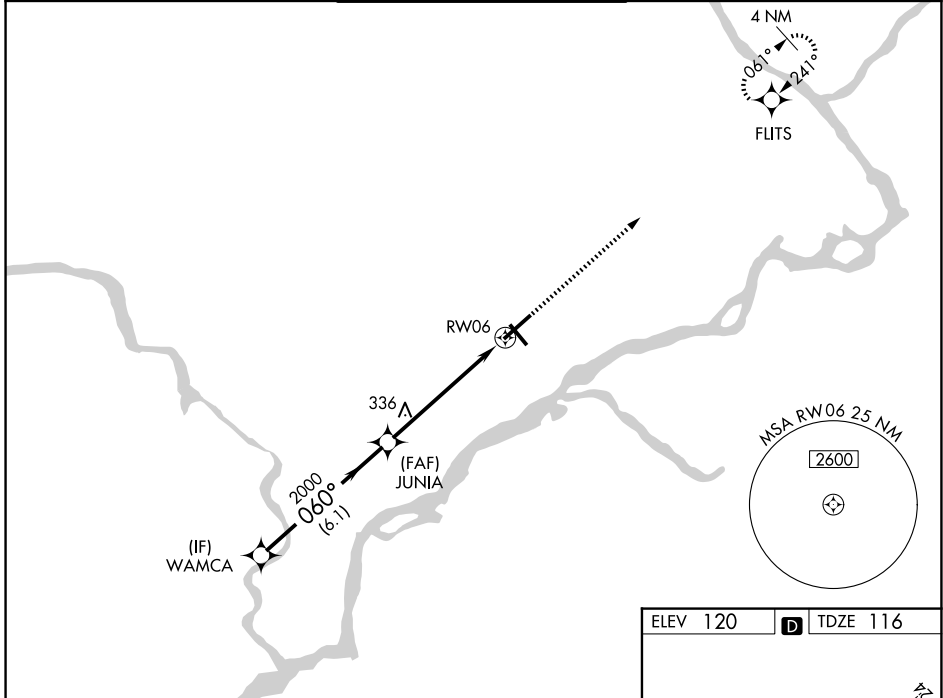
WAAS CH <b>65622</b> <b>W06A</b>	APP CRS <b>060°</b>	Rwy Ldg TDZE <b>116</b> Apt Elev <b>120</b>	<b>6502</b>
--	------------------------	---	-------------

# RNAV (GPS) RWY 6

NORtheast PHILADELPHIA (PNE)

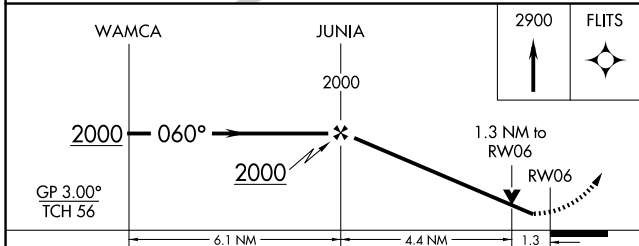
RNP APCH - GPS.		MISSED APPROACH: Climb to 2900 direct FLITS and hold.	
<b>T</b>	Rwy 6 helicopter visibility reduction below 3/4 SM NA. For uncompensated Baro-VNAV systems, LNAV/VNAV NA below -12°C or above 54°C.		

ATIS <b>121.15</b>	PHILADELPHIA APP CON <b>123.8 291.7</b>	NORtheast PHILADELPHIA TOWER ★ <b>126.9 (CTAF) 278.8</b>	GND CON <b>121.7</b>	UNICOM <b>122.95</b>
-----------------------	--	---	-------------------------	-------------------------



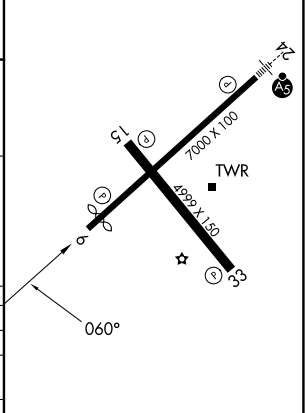
NE-4, 14 MAY 2026 to 11 JUN 2026

NE-4, 14 MAY 2026 to 11 JUN 2026



ELEV 120	<b>D</b> TDZE 116
----------	-------------------

CATEGORY	A	B	C	D
LPV DA		366-3/4	250 (300-3/4)	
LNAV/DA		530-1 1/8	414 (500-1 1/8)	
LNAV MDA	600-1 484 (500-1)		600-1 3/8 484 (500-1 3/8)	
CIRCLING	700-1 580 (600-1)		720-1 1/2 600 (600-1 1/2)	780-2 660 (700-2)



HIRL Rwy 6-24  
MIRL Rwy 15-33  
REIL Rwy 6, 15 and 33