

MECCA ONE DEPARTURE

SOCAL DEP CON
135.275 251.1
ASOS
118.325
CLNC DEL
120.225
UNICOM
123.0 (CTAF)

TWENTYNINE PALMS
114.2 TNP
Chan 89

PALM SPRINGS
115.5 PSP
Chan 102

THERMAL
116.2 TRM
Chan 109

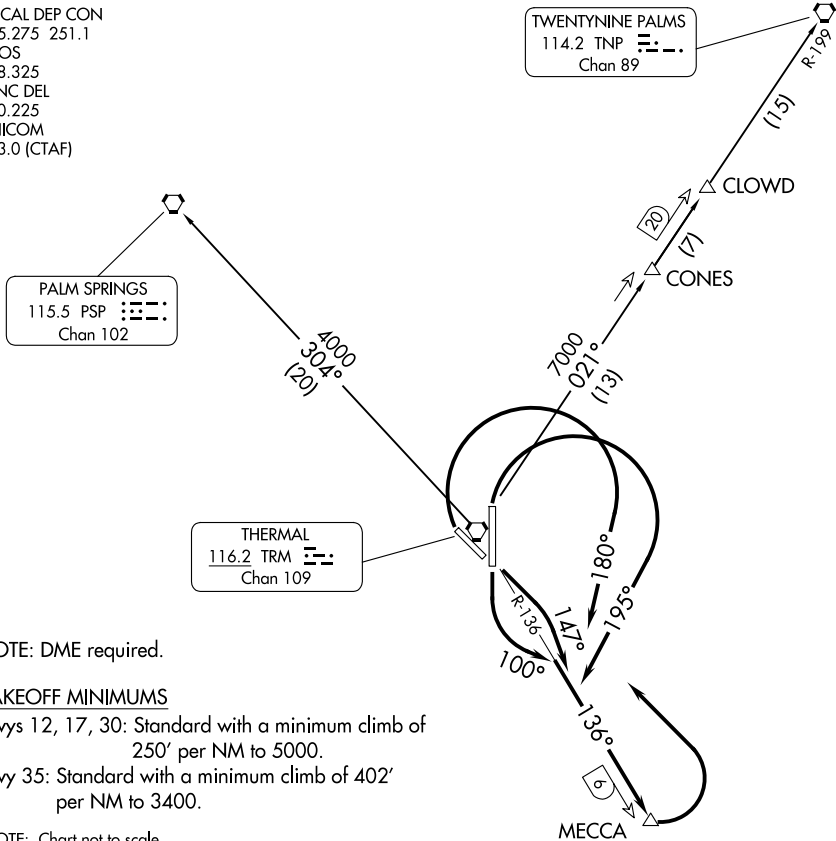
NOTE: DME required.

TAKEOFF MINIMUMS

Rwys 12, 17, 30: Standard with a minimum climb of 250' per NM to 5000.

Rwy 35: Standard with a minimum climb of 402' per NM to 3400.

NOTE: Chart not to scale.



DEPARTURE ROUTE DESCRIPTION

TAKEOFF RUNWAY 12: Climbing right turn heading 147° to intercept TRM VORTAC R-136 to MECCA, then climbing left turn direct TRM VORTAC. Thence. . .

TAKEOFF RUNWAY 17: Climbing left turn heading 100° to intercept TRM VORTAC R-136 to MECCA, then climbing left turn direct TRM VORTAC. Thence. . .

TAKEOFF RUNWAY 30: Climbing right turn heading 180° to intercept TRM VORTAC R-136 to MECCA, then climbing left turn direct TRM VORTAC. Thence. . .

TAKEOFF RUNWAY 35: Climbing right turn heading 195° to intercept TRM VORTAC R-136 to MECCA, then climbing left turn direct TRM VORTAC. Thence. . .

. . . then on (assigned transition). Expect filed altitude 10 minutes after departure.

PALM SPRINGS TRANSITION (MECCA1.PSP): From over TRM VORTAC on TRM R-304 to PSP VORTAC.

TWENTY NINE PALMS TRANSITION (MECCA1.TNP): From over TRM VORTAC on TRM R-021 and TNP R-199 to TNP VORTAC.

MECCA ONE DEPARTURE

SW-3, 14 MAY 2026 to 11 JUN 2026

SW-3, 14 MAY 2026 to 11 JUN 2026