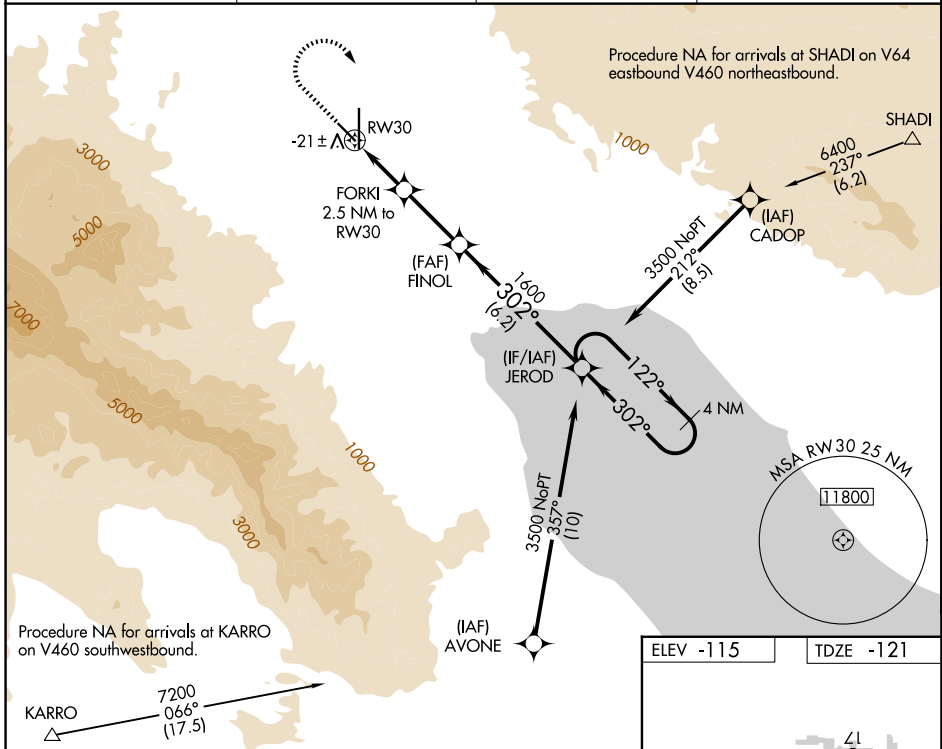


WAAS CH 77941 W30A	APP CRS 302°	Rwy Ldg TDZE Apt Elev	4995 -121 -115
--	------------------------	-----------------------------	---

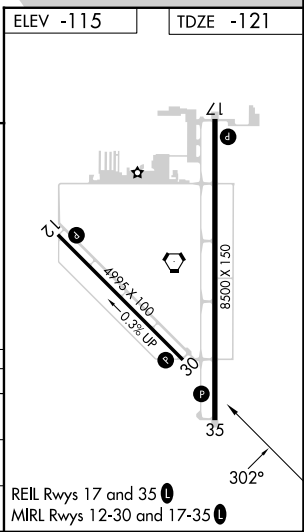
RNAV (GPS) RWY 30

JACQUELINE COCHRAN RGNL (TRM)

RNP APCH.		MISSED APPROACH: (Do not exceed 230K until JEROD) Climb to 1200 then climbing right turn to 3500 direct JEROD and hold.	
ASOS 118.325	SOCAL APP CON 135.275 251.1	CLNC DEL 120.225	UNICOM 123.0 (CTAF) 0



1200	3500	JEROD	VGSI and RNAV glidepath not coincident (VGSI Angle 3.00/TCH 25).		
* LNAV only		FORKI	FINOL	JEROD	
* 1.1 NM to RW30		2.5 NM to RW30	1600	4 NM Holding Pattern	
RW30		700*	302°	122° → 3500	
1.1		1.4 NM	2.8 NM	← 302°	
CATEGORY		A	B	C	D
LPV	DA	129-3/4 250 (300-3/4)			
LNAV	MDA	260-1 381 (400-1)		260-1 1/8 381 (400-1 1/8)	
CIRCLING		320-1 435 (500-1)	340-1 455 (500-1)	460-1 1/2 575 (600-1 1/2)	780-3 895 (900-3)



SW-3, 14 MAY 2026 to 11 JUN 2026

SW-3, 14 MAY 2026 to 11 JUN 2026