

WAAS CH 77542 W34A	APP CRS 339°	Rwy Ldg TDZE Apt Elev	7003 3916 3942
--	------------------------	-----------------------------	---

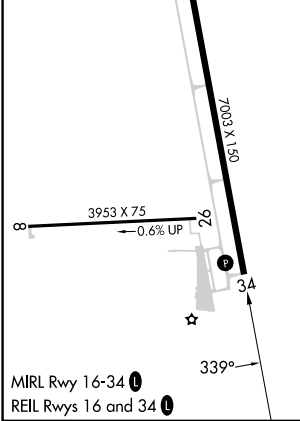
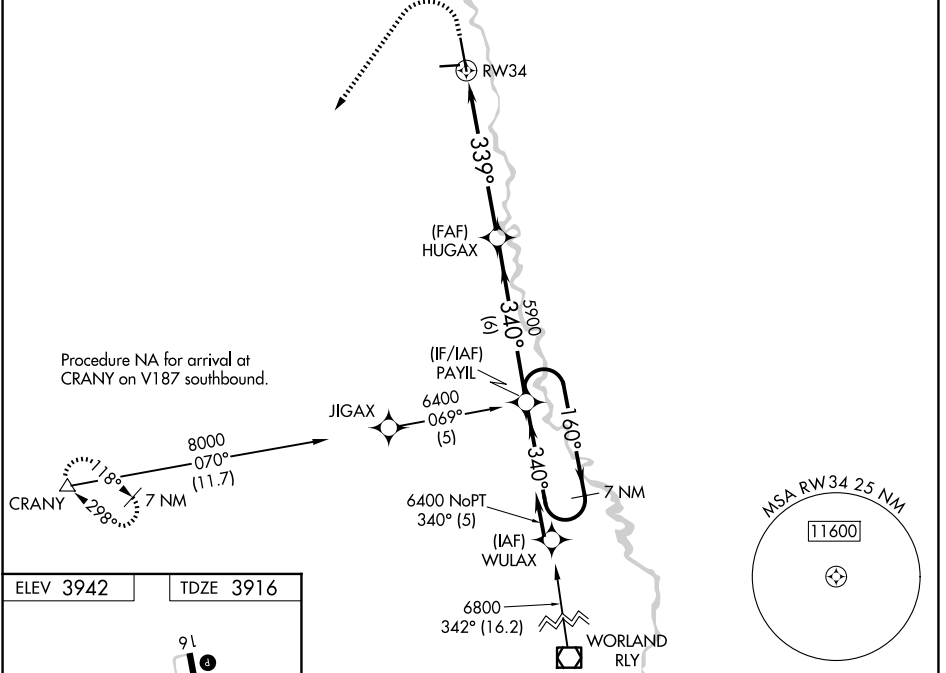
RNAV (GPS) RWY 34

SOUTH BIG HORN COUNTY (GEY)

⚠ Baro-VNAV NA when using Cowley/Lovell/Byron altimeter setting. For uncompensated Baro-VNAV systems, LNAV/VNAV NA below -26°C (-14°F) or above 51°C (124°F). DME/DME RNP-0.3 NA. When local altimeter setting not received, use Cowley/Lovell/Byron altimeter setting and increase LPV DA to 4253 feet and LNAV/VNAV DA to 4327 feet. Increase LPV and LNAV/VNAV visibility all Cats $\frac{3}{8}$ SM. Increase all MDAs 100 feet and LNAV visibility Cat B $\frac{1}{4}$ SM, Cats C/D $\frac{1}{2}$ SM and Circling Cat B $\frac{1}{4}$ SM. VDP NA with Cowley/Lovell/Byron altimeter setting.

MISSED APPROACH: Climb to 4400 then climbing left turn to 9000 direct CRANY and hold, continue climb-in-hold 9000.

ASOS 135.325	SALT LAKE CENTER 127.75 351.9	CTAF 122.9
------------------------	---	----------------------



4400	9000	CRANY				
* LNAV only.		* 2.1 NM to RW34	HUGAX	PAYIL	7 NM Holding Pattern	
RW34		5900	5900	6400	GP 3.00° TCH 50	
-2.1 NM		4 NM	6 NM			
CATEGORY	A	B	C	D		
LPV DA	4166- $\frac{3}{4}$		250 (300- $\frac{3}{4}$)			
LNAV/VNAV DA	4240-1		324 (300-1)			
LNAV MDA	4640-1 724 (700-1)		4640-2 724 (700-2)			
CIRCLING	4640-1 698 (700-1)	4700-1 $\frac{1}{4}$ 758 (800-1 $\frac{1}{4}$)	5320-3 1378 (1400-3)	5460-3 1518 (1600-3)		

NW-1, 14 MAY 2026 to 11 JUN 2026

NW-1, 14 MAY 2026 to 11 JUN 2026