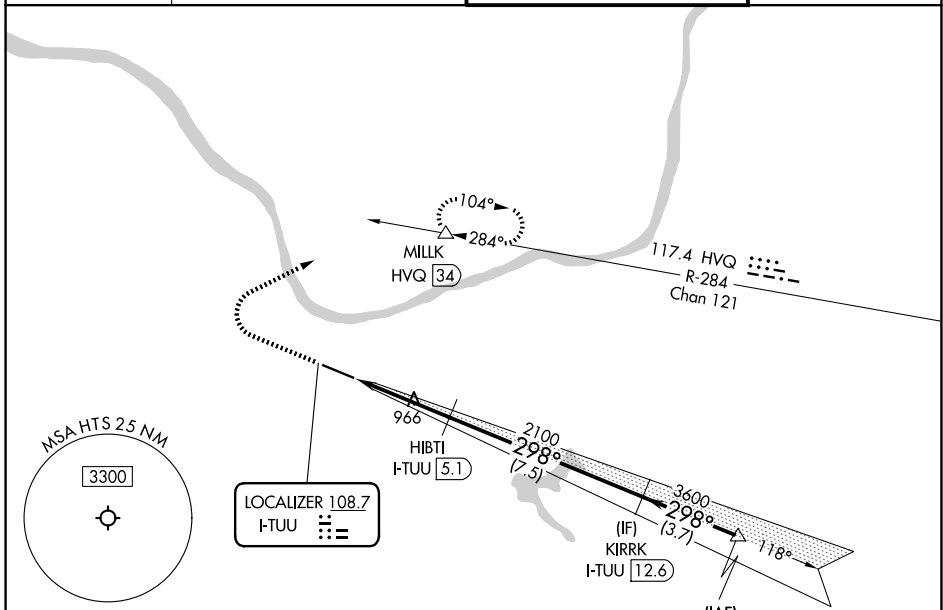


LOC I-TUU 108.7	APP CRS 298°	Rwy Ldg TDZE Apt Elev	6516 828 828
---------------------------	------------------------	-----------------------------	---

ILS or LOC RWY 30

TRI-STATE/MILTON J FERGUSON FLD (HTS)

DME required. RADAR required for procedure entry at HAITI.		MISSED APPROACH: Climb to 1300 then climbing right turn to 4000 heading 055° and on HVQ VOR/DME R-284 to MILLK/HVQ 34 DME and hold, continue climb-in-hold to 4000.	
ATIS 125.2	HUNTINGTON APP CON 119.75 270.1	HUNTINGTON TOWER 118.5 270.1	GND CON 121.9



NE-4, 14 MAY 2026 to 11 JUN 2026

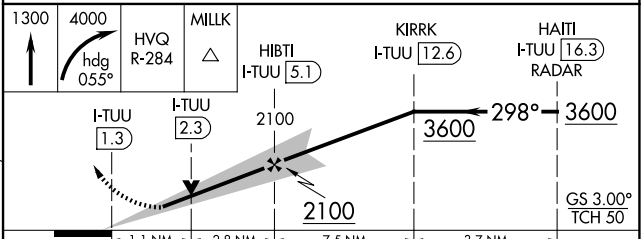
NE-4, 14 MAY 2026 to 11 JUN 2026

ELEV 828	D	TDZE 828
----------	----------	----------

REIL Rwy 30
HIRL Rwy 12-30

FAF to MAP 3.8 NM

Knots	60	90	120	150	180
Min:Sec	3:48	2:32	1:54	1:31	1:16



CATEGORY	A	B	C	D
S-ILS 30	1028- ³ / ₄ 200 (200- ³ / ₄)			
S-LOC 30	1220-1	392 (400-1)	1220-1 ¹ / ₈	392 (400-1 ¹ / ₈)
CIRCLING	1300-1 472 (500-1)	1380-1 552 (600-1)	1520-2 692 (700-2)	1740-3 912 (1000-3)

ILS or LOC RWY 30