

TACAN RWY 32

TACAN BKF Chan 33	APCH CRS 328°	Rwy ldg 11,006 TDZE 5663 Arprt Elev 5663	AL-538 [USAF]	BUCKLEY SFB (KBKF)
-----------------------------	-------------------------	---	---------------	--------------------

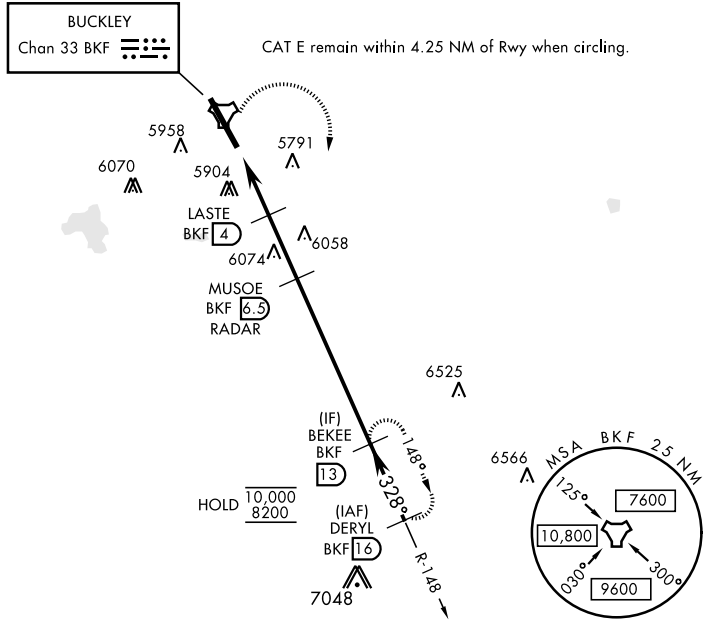
▼ * When ALS inop, increase CAT AB RVR to 55 and vis to 1 mile, CAT CDE vis to 1¾ miles.
 ** Circling NA east of Rwy 14-32.



MISSED APPROACH: Climbing right turn to 8200 and intercept BKF TACAN R-148 direct BEKEE and hold or as directed by ATC.

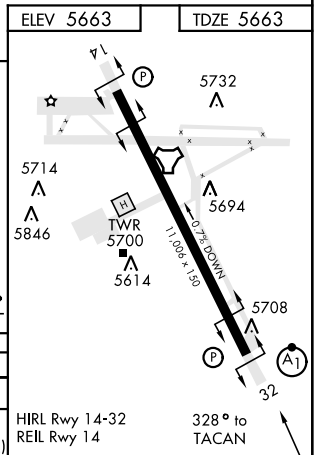
ATIS ★ 119.675 259.3	DENVER APP CON 128.45 251.075	TOWER ★ 121.0 291.675	GND CON 121.6 275.8	CLNC DEL 121.6 275.8
--------------------------------	---	---------------------------------	-------------------------------	--------------------------------

Missed approach requires use of RNAV or ATC RADAR monitoring.



EMERG SAFE ALT 100 NM 16,500

8200 BKF R-148	BEKEE BKF 13					
TACAN	CENAR 1.7	LASTE 4	MUSOE 6.5 RADAR	BEKEE 13	DERYL 16	8100
0.5 NM		2.3 NM		2.5 NM		
CATEGORY	A	B	C	D	E	
S-32 *	6280/24 617 (700-½)		6280-1⅓ 617 (700-1⅓)			
CIRCLING **	6280-1 617 (700-1)		6360-2 697 (700-2)	6400-2¼ 737 (800-2¼)	6420-2¾ 757 (800-2¾)	



TACAN RWY 32

SW-1, 14 MAY 2026 to 11 JUN 2026

SW-1, 14 MAY 2026 to 11 JUN 2026