

RADAR required.

(YELLOW5 DEN) 25219
YELLOWSTONE FIVE DEPARTURE

BUCKLEY SPACE FORCE BASE (KBKTF)
AURORA, COLORADO
AL-538 (FAA)

DENVER DEP CON
128.45 251.075
ATIS
119.675 259.3
CLINC DEL
121.6 275.8

MEDICINE BOW
116.85 MBW
Chan 115(Y)

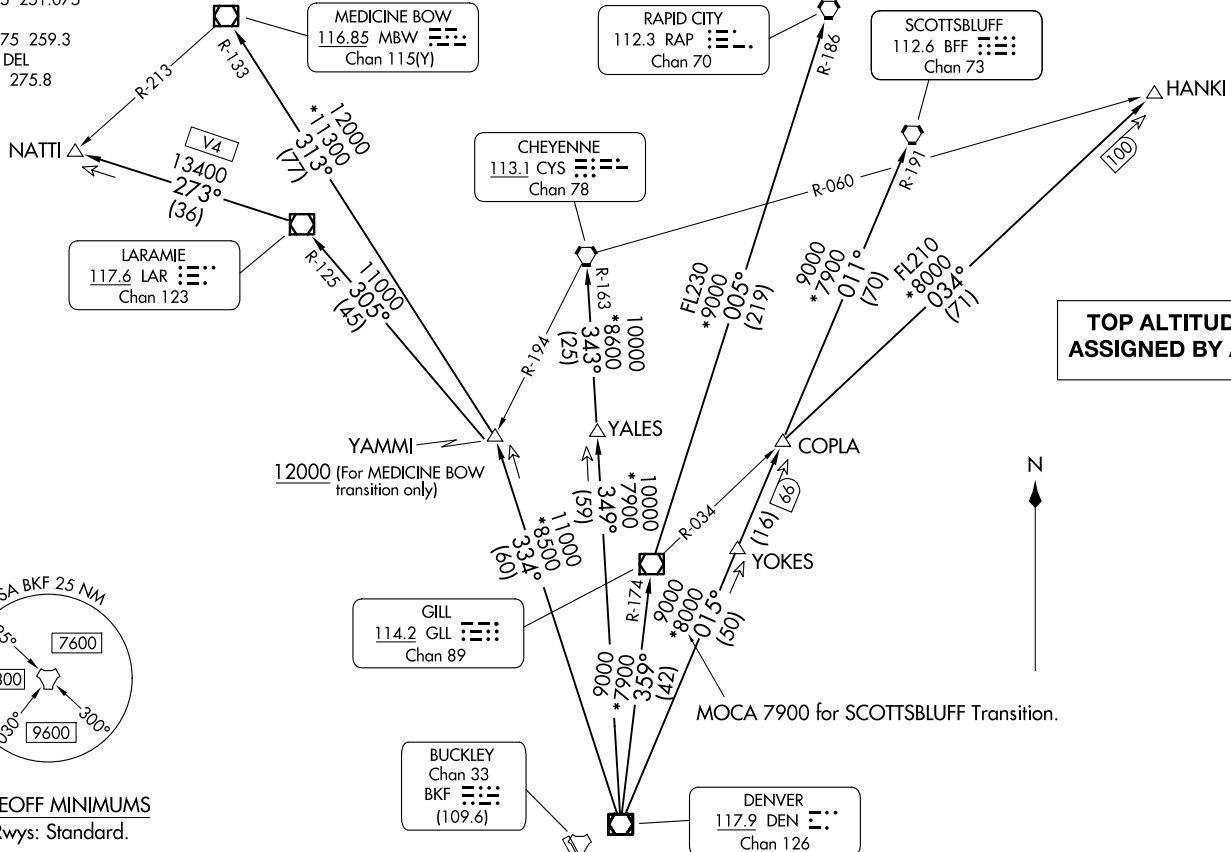
RAPID CITY
112.3 RAP
Chan 70

SCOTTSDLUFF
112.6 BFF
Chan 73

CHEYENNE
113.1 CYS
Chan 78

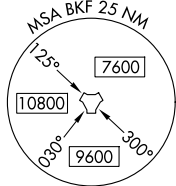
LARAMIE
117.6 LAR
Chan 123

TOP ALTITUDE:
ASSIGNED BY ATC



YELLOWSTONE FIVE DEPARTURE
(YELLOW5 DEN) 12JUN25

BUCKLEY SPACE FORCE BASE (KBKTF)
AURORA, COLORADO



TAKEOFF MINIMUMS
All Rwy's: Standard.

NOTE: Chart not to scale.

(CONTINUED ON FOLLOWING PAGE)



DEPARTURE ROUTE DESCRIPTION

TAKEOFF ALL RUNWAYS: Fly assigned heading and altitude for RADAR vectors to assigned route. Expect filed altitude 10 minutes after departure.

LOST COMMUNICATIONS: If no transmissions are received within one minute after departure, maintain assigned heading until 7000, then climb to filed altitude direct to DEN VOR/DME, then on assigned route. If filed altitude is above 10000, cross DEN VOR/DME at or above 11000.

CHEYENNE TRANSITION (YELLOW5.CYS): From over DEN VOR/DME on DEN R-349 and CYS R-163 to CYS VORTAC.

HANKI TRANSITION (YELLOW5.HANKI): From over DEN VOR/DME on DEN R-015 and GLL R-034 to HANKI.

LARAMIE TRANSITION (YELLOW5.LAR): From over DEN VOR/DME on DEN R-334 and LAR R-125 to LAR VOR/DME.

MEDICINE BOW TRANSITION (YELLOW5.MBW): From over DEN VOR/DME on DEN R-334 and MBW R-133 to MBW VOR/DME.

NATTI TRANSITION (YELLOW5.NATTI): From over DEN VOR/DME on DEN R-334 and LAR R-125 to LAR VOR/DME, then on LAR R-273 to NATTI.

RAPID CITY TRANSITION (YELLOW5.RAP): From over DEN VOR/DME on DEN R-359 and GLL R-174 to GLL VOR/DME, then on GLL R-005 and RAP R-186 to RAP VORTAC.

SCOTTSBLUFF TRANSITION (YELLOW5.BFF): From over DEN VOR/DME on DEN R-015 and BFF R-191 to BFF VORTAC.

SW-1, 14 MAY 2026 to 11 JUN 2026

SW-1, 14 MAY 2026 to 11 JUN 2026